

750K/850K DOZERS

123–152 kW (165–205 hp)



JOHN DEERE



It's got your fingerprints all over it.

OK, maybe not **your** fingerprints. But equipment owners and operators like you had a hand in perfecting our EPA Final Tier (4)/EU Stage IV K-Series Dozers. Armed with real-world experience, participants in our Customer Advocate Group (CAG) offered their expertise. We listened and responded with numerous enhancements including diesel engines for generous displacement, power, and lugging ability. Standard Eco mode for improved fuel efficiency with no loss of productivity. Spacious cabs that are noticeably quieter and more comfortable. And best-in-class serviceability features such as a new ground-level air cleaner and an innovative easy-to-clean V-cool package. Add the unsurpassed operating ease and maneuverability for which our dozers are known, and the K-Series is an obvious choice.

| Model | Dozer Blade | Rated Power | Base Weight |
|----------|------------------------|-----------------|------------------------|
| 750K XLT | Power-Angle-Tilt (PAT) | 123 kW (165 hp) | 15 661 kg (34,527 lb.) |
| 750K LGP | PAT | 123 kW (165 hp) | 17 121 kg (37,745 lb.) |
| 750K | Outside Dozer (OSD) | 123 kW (165 hp) | 15 679 kg (34,566 lb.) |
| 850K | OSD | 152 kW (205 hp) | 19 304 kg (42,558 lb.) |
| 850K WT | OSD | 152 kW (205 hp) | 20 050 kg (44,202 lb.) |
| 850K LGP | OSD | 152 kW (205 hp) | 21 775 kg (48,005 lb.) |
| 850K XLT | PAT | 152 kW (205 hp) | 19 876 kg (43,818 lb.) |
| 850K WLT | PAT | 152 kW (205 hp) | 20 481 kg (45,152 lb.) |
| 850K LGP | PAT | 152 kW (205 hp) | 21 036 kg (46,376 lb.) |



Ultimate Uptime, featuring John Deere WorkSight™, is a customizable support solution available exclusively from your Deere dealer. This flexible offering maximizes equipment availability with standard John Deere WorkSight capabilities that can help prevent future downtime and speed repairs when it does occur. In addition to the base John Deere WorkSight features, our dealers work with you to build an uptime package that meets the specific needs of your machine, fleet, project, and business, including customized maintenance and repair agreements, onsite parts availability, extended warranties, fluid sampling, response-time guarantees, and more.



Go beyond the limits of other dozers.

Packed full of production-boosting and fluid-efficiency advantages, our dozers do more without a lot of extra effort. State-of-the-art electronic controls put an operator in complete command of an arsenal of production-boosting hydrostatic advantages, including power turns, counter-rotation, and infinitely variable travel speeds. New features like standard Eco mode will help save fuel without loss of productivity, adding more money to your bottom line. Nothing runs like a Deere.



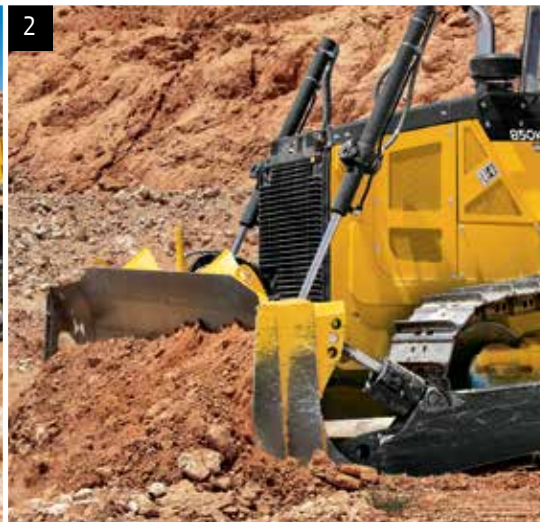
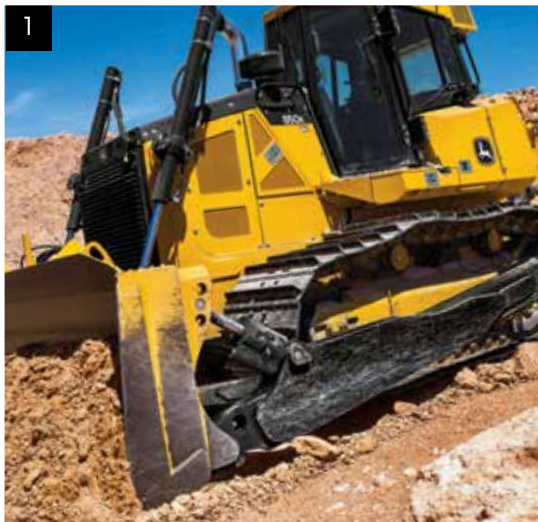
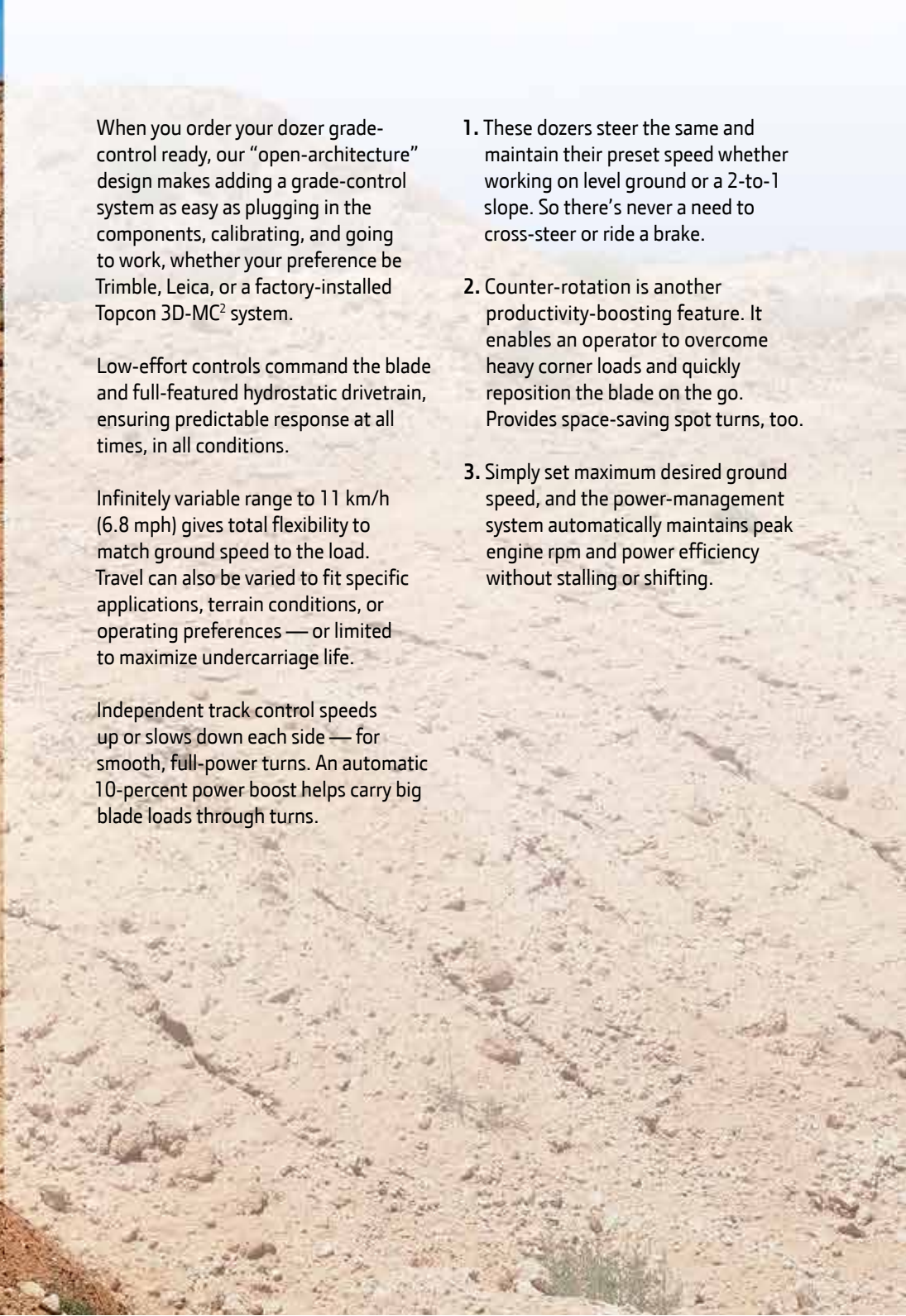
When you order your dozer grade-control ready, our “open-architecture” design makes adding a grade-control system as easy as plugging in the components, calibrating, and going to work, whether your preference be Trimble, Leica, or a factory-installed Topcon 3D-MC² system.

Low-effort controls command the blade and full-featured hydrostatic drivetrain, ensuring predictable response at all times, in all conditions.

Infinitely variable range to 11 km/h (6.8 mph) gives total flexibility to match ground speed to the load. Travel can also be varied to fit specific applications, terrain conditions, or operating preferences — or limited to maximize undercarriage life.

Independent track control speeds up or slows down each side — for smooth, full-power turns. An automatic 10-percent power boost helps carry big blade loads through turns.

1. These dozers steer the same and maintain their preset speed whether working on level ground or a 2-to-1 slope. So there's never a need to cross-steer or ride a brake.
2. Counter-rotation is another productivity-boosting feature. It enables an operator to overcome heavy corner loads and quickly reposition the blade on the go. Provides space-saving spot turns, too.
3. Simply set maximum desired ground speed, and the power-management system automatically maintains peak engine rpm and power efficiency without stalling or shifting.



Get more done inside our comfort zone.

Of course you want your operators to be more productive. So why not put them in the seat of a K-Series Dozer's noticeably quiet and spacious cab? From ergonomically designed fully customizable controls to excellent overall visibility in all directions, these standard-setting dozers are loaded with everything you need to keep your operators comfortably productive — and on your payroll.

Standard high-back air-suspension seat and optional deluxe heated and leather-bolstered lower cushion adjust multiple ways for daylong comfort and support. Arm- and footrests also adjust.

Use the decelerator to slow both ground speed and engine rpm. Or ground speed only to help maintain traction without affecting engine power and hydraulic response. Fully depressing the pedal applies the brakes.

Oil-filled cab mounts and extensive insulation effectively isolate operators from vibration and noise. At just 76 dBA, the cab is noticeably quiet.

Beyond cup holders and cooler storage, there are plenty of places to store stuff. If you're running a grade-control system, the lockable in-dash storage (or permanent placement) of the monitor.

Exclusive Total Machine Control (TMC) monitor lets an operator select decelerator mode and response, forward/reverse ground-speed ranges, steering modulation, F-N-R shift rate, and forward/reverse speed ratios.

Fully modulated hydrostatic drivetrain ensures smooth moves, virtually eliminating jerky or abrupt movements.





1. Sealed-switch module gives fingertip control of keyless start and enables exclusive features such as turbo-charger cool-down and auto shut-down. Touchpad security system requires a numeric pass code (when enabled) to help prevent unauthorized machine operation.

2. Overhead radio and storage console includes a 12-volt electrical outlet for powering a cell phone or an iPod®.

3. Ergonomically correct joystick provides intuitive, low-effort control of steering, direction, and ground speed. It's detented so it doesn't require an operator's constant touch or attention, and employs a thumb-actuated travel-speed control switch.



Nothing runs like a Deere, because nothing is built like it.

Designed and built with state-of-the-art tools and techniques by a quality-conscious workforce at our world-class facility in Dubuque, Iowa, the K-Series comes loaded with uptime-boosting features. Enhancements such as our unique V-cool system, new ground-level air cleaner, and EPA FT4/EU Stage IV diesel engines — plus traditional John Deere features such as one-piece unitized mainframes, DuraTrax™ undercarriages, wet-sleeve engine liners, and isolated planetary final drives — give our dozers the durability you need. When you know how they're built, you'll run these Deere.

Standard Eco mode automatically adjusts engine power and transmission settings based on load while maintaining ground speed, to help optimize fuel economy with no loss of productivity. Auto-idle helps save fuel by reducing engine speed when the dozer is not moving.

Variable-speed on-demand fan automatically speeds up or slows down, operating only as needed to keep things cool. Helps conserve power and fuel, while reducing noise.

One-piece welded mainframe resists torsional stress, absorbs shock loads, and delivers maximum strength while allowing easy service access to major components. Heavy-duty double-reduction planetary final drives are mounted independent of the track frames, where they're effectively protected from shock loads.

Reversing fan automatically backblows the cooler cores at preset intervals. When conditions demand more frequent cleaning, simply press a button to actuate the reversing cycle.

Engine pre-cleaner with aspiration lines provides higher filter efficiency for longer engine filter service life.

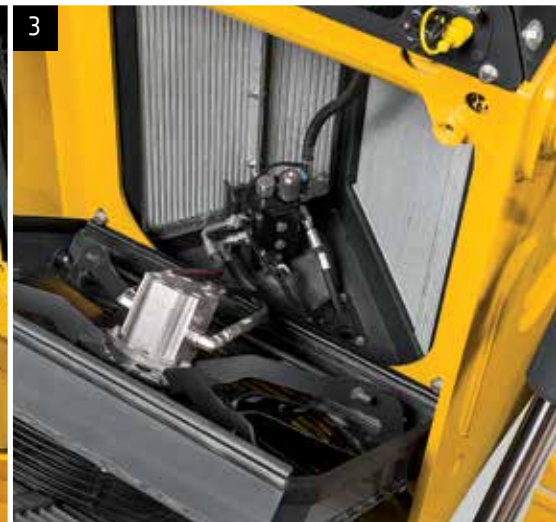
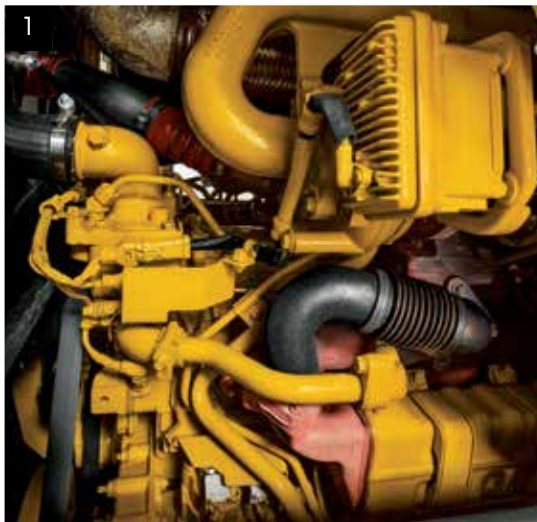
Available extended-life undercarriage delivers up to twice the bushing life, for extra durability in extremely abrasive conditions. If you want to further reduce maintenance and operating costs, choose the SC-2™ extended-life option.

Individually replaceable wet-sleeve engine-cylinder liners provide uniform engine cooling and long-term durability.

1. Our FT4/Stage IV diesels meet emission regulations without sacrificing power or torque. We built on our Interim Tier 4 (IT4)/Stage IIIB solution to deliver the best combination of performance, efficiency, and reliability. This technology is simple, fluid efficient, fully integrated, and fully supported. It employs field-proven cooled exhaust gas recirculation (EGR), easy-to-maintain high-uptime exhaust filters, and selective catalytic reduction (SCR).

2. Flush-fit bottom guards and tight-fitting side shields help keep trash out. Hood and side-shield perforations function as a "first filter," further preventing entry of most debris. Anything that gets past the five-mm holes also passes through the cooler cores.

3. V-cool design isolates coolers from dust and engine heat for increased efficiency and durability. Positioned behind the heavy-duty grille and fan, coolers are also less vulnerable.



Precise grades, strong blades.

John Deere dozers enjoy solid reputations as superior grading machines. And for plenty of reasons. Unlike others that utilize the same mainframe with all dozers, our purpose-built design optimizes blade ratio and center of gravity for superior balance. So whether you opt for a power-angle-tilt (PAT) or an outside-mount straight or semi-U blade, you'll profit from uncompromised performance. Durability is also second-to-none. Advantages such as noticeably larger push beams, closed-cell blades, box-section C-frames, and steel-cable-supported Cordura®-covered hydraulic hoses provide long-term stamina and strength.

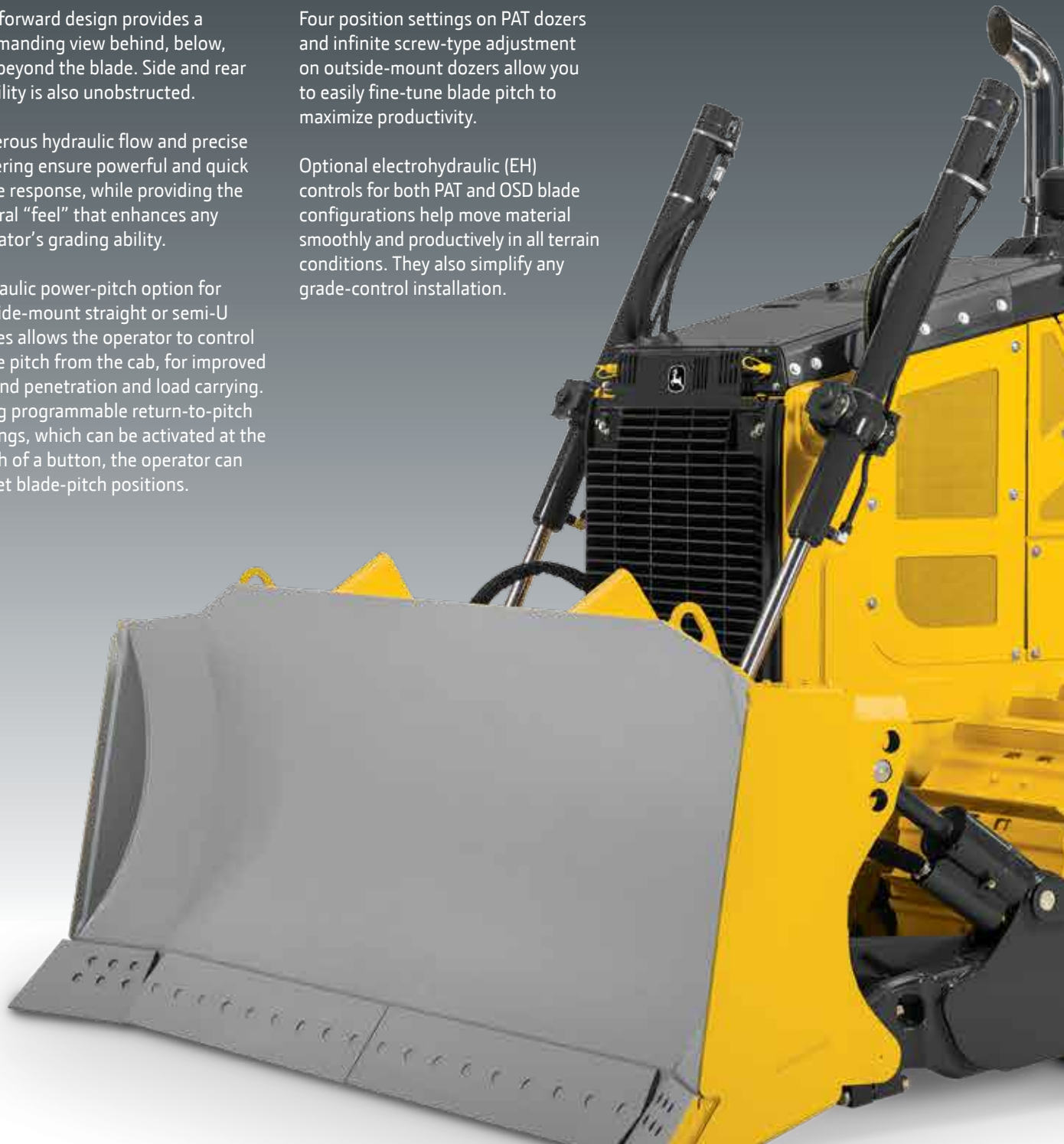
Cab-forward design provides a commanding view behind, below, and beyond the blade. Side and rear visibility is also unobstructed.

Generous hydraulic flow and precise metering ensure powerful and quick blade response, while providing the natural "feel" that enhances any operator's grading ability.

Hydraulic power-pitch option for outside-mount straight or semi-U blades allows the operator to control blade pitch from the cab, for improved ground penetration and load carrying. Using programmable return-to-pitch settings, which can be activated at the touch of a button, the operator can preset blade-pitch positions.

Four position settings on PAT dozers and infinite screw-type adjustment on outside-mount dozers allow you to easily fine-tune blade pitch to maximize productivity.

Optional electrohydraulic (EH) controls for both PAT and OSD blade configurations help move material smoothly and productively in all terrain conditions. They also simplify any grade-control installation.



1. PAT blade's heavy-duty ball-and-socket C-frame joint resists material buildup for long-term grading precision. Blade hoses are steel-cable supported and Cordura covered for extra protection.

2. Greaseless shim-adjustable clamshell bearings in the front and rear joints of the push beams ensure a tight connection for low-maintenance, "like-new" grading performance.

3. Heavy-duty cross-members provide solid lateral support and are shaped to allow a clear view of the bottom of the blade. What's more, their raised position allows generous clearance at the end of the push.

4. With heavy-duty high-profile push beams and a three-position pitch-adjustable semi-U blade, the outside-mount dozer delivers exceptional durability and high-production performance.





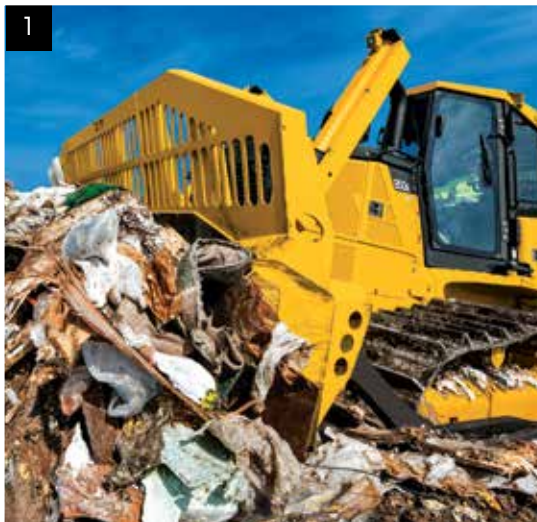
Configured, not compromised.

Yours isn't just any business. Why settle for just any dozer? With multiple undercarriage configurations, inside-mount PAT or outside-mount straight or semi-U blades, and numerous other options available, building a John Deere dozer your way is the way we do business. These highly versatile machines can also be equipped with special-duty and severe-application packages that help them thrive on a wide variety of jobsites. Tackle tasks that other dozers can't. Ask your dealer for details.



| Model | Dozer Blade | Grouser Width |
|----------|------------------------|-----------------|
| 750K XLT | Power-Angle-Tilt (PAT) | 560 mm (22 in.) |
| 750K LGP | PAT | 865 mm (34 in.) |
| 750K | Outside Dozer (OSD) | 560 mm (22 in.) |
| 850K | OSD | 610 mm (24 in.) |
| 850K WT | OSD | 760 mm (30 in.) |
| 850K LGP | OSD | 910 mm (36 in.) |
| 850K XLT | PAT | 610 mm (24 in.) |
| 850K WLT | PAT | 760 mm (30 in.) |
| 850K LGP | PAT | 910 mm (36 in.) |

1. Protection packages and waste-handler configurations equip these dozers to survive, even thrive, in tough environments.
2. With their hydrostatic drivetrains and impressive drawbar pull, our dozers work well with rear-mount attachments such as rippers and cable plows.
3. High-intensity halogen driving lights are standard. But if you want to extend your workday beyond daylight, opt for the 360-deg. light package.



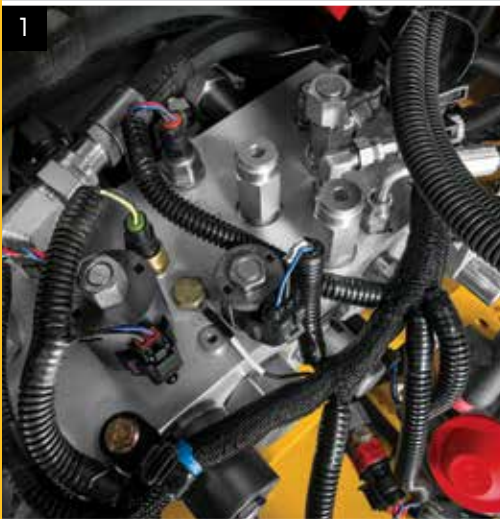
Designed with an open mind.

It takes only minutes to uncover the many ways our FT4/Stage IV K-Series helps minimize maintenance. Side shields swing open wide to reveal convenient same-side daily service points. An exclusive tilt-out fan box allows simplified access to cooler cores for quick cleanout. Other periodic service tasks such as fluid and filter changes are also refreshingly easy. Even gaining access to drivetrain components takes only minutes. As you can see, when it comes to keeping uptime up and daily operating costs down, we're pretty open-minded.

1. Available quick fluid-evacuation system helps speed servicing. 500-hour engine oil and 2,000-hour transmission and hydraulic fluid intervals decrease downtime and expense.
2. Fluid-sample and diagnostic test ports simplify preventive-maintenance work and troubleshooting for increased uptime.

3. Operator station tilts a full 70 deg. in only minutes, for wide-open drivetrain component access.
4. New ground-level air cleaner simplifies periodic service and is monitored by the onboard diagnostic system. Filters are common with many other John Deere crawler models.

5. Exhaust filter operation and status are indicated with icons and on-screen displays. The diagnostic monitor also provides easy-to-understand messages that help speed troubleshooting.



Ash-service intervals for the diesel particulate filter (DPF) are condition based, meaning the machine will notify the operator before service is required. Typically, ash service is not necessary until the first engine overhaul. Machine application, regular maintenance practices, and type of lubricating oil impact ash-service intervals.

Advanced diagnostic monitor provides easy-to-understand messages to help speed troubleshooting.

Heavy-duty recessed belly guards allow easy access to the engine oil pan for fast service.

Sealed hydraulic and hydrostatic reservoirs are separate, eliminating any possibility of cross-contamination.

Hinged side shields swing open wide for convenient access to dipsticks; fill tubes; batteries; master electrical shutoff; and engine, transmission, and hydraulic filters.

Remote lube banks provide easy access to difficult-to-reach crossbar and C-frame pivots. Convenient color-coded lube chart ensures that nothing gets overlooked.

Vertical filters allow quick, no-spill changes. Engine, hydraulics, and transmission utilize a common oil, further simplifying service.

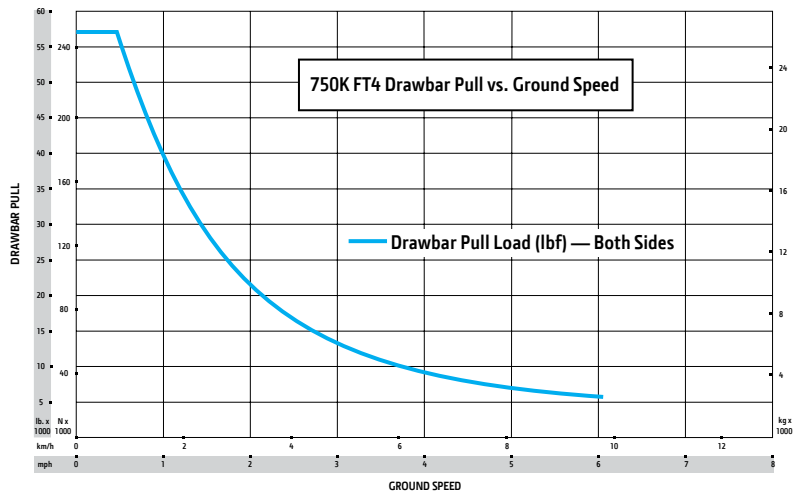


John Deere WorkSight is an exclusive suite of telematic solutions that increases uptime while lowering operating costs. At its heart, JDLink Ultimate machine monitoring provides real-time utilization data and alerts to help you maximize productivity and efficiency while minimizing downtime. Remote diagnostics enable your dealer to read codes, record performance data, and even update software without a trip to the jobsite.

750K



| Engine | 750K XLT / 750K LGP | 750K |
|----------------------------|---|--|
| Blade Type | Power/Angle/Tilt (PAT) | Outside Dozer Blade (OSD) |
| Manufacturer and Model | John Deere PowerTech™ PVS 6068 | John Deere PowerTech PVS 6068 |
| Non-Road Emission Standard | EPA Final Tier 4/EU Stage IV | EPA Final Tier 4/EU Stage IV |
| Displacement | 6.8 L (414 cu. in.) | 6.8 L (414 cu. in.) |
| SAE Net Rated Power | 123 kW (165 hp) at 1,800 rpm | 123 kW (165 hp) at 1,800 rpm |
| Net Peak Torque | 768 Nm (567 lb.-ft.) at 1,400 rpm | 768 Nm (567 lb.-ft.) at 1,400 rpm |
| Aspiration | Turbocharged with charge air cooler | Turbocharged with charge air cooler |
| Air Cleaner | Vacuum-aspirated dual-element dry canister | Vacuum-aspirated dual-element dry canister |
| Cooling | 750K XLT / 750K LGP / 750K | |
| Type | Variable-speed suction fan with automatic reversing | |
| Engine Coolant Rating | -37 deg. C (-34 deg. F) | |
| Engine Radiator | 10 fins per in. | |
| Powertrain | 750K XLT | |
| Transmission | Automatic, dual-path, hydrostatic drive; load-sensing feature automatically adjusts speed and power to match changing load conditions; each individually controlled track is powered by a variable-displacement piston pump and motor combination; ground-speed selection buttons on single-lever steering and direction control; independently selectable reverse speed ratios of 100%, 115%, or 130% of forward ground speed; decelerator pedal controls ground speed to stop | |
| System Relief Pressure | 45 850 kPa (6,650 psi) | |
| Travel Speeds | | |
| Forward and Reverse | 9.7 km/h (6.0 mph) | |
| Maximum (optional) | 11.0 km/h (6.8 mph) | |
| Steering | Single-lever steering, speed, direction control, and counter-rotation; full power turns and infinitely variable track speeds provide unlimited maneuverability and optimum control; hydrostatic steering eliminates steering clutches and brakes | |
| Final Drives | Double-reduction, planetary final drives mounted independently of track frames and dozer push frames for isolation from shock loads | |
| Total Ratio | 46.41 to 1 | |
| Drawbar Pull | | |
| Maximum | 254 kN (57,000 lb.) | |
| At 1.9 km/h (1.2 mph) | 156 kN (35,000 lb.) | |
| At 3.2 km/h (2.0 mph) | 98 kN (22,000 lb.) | |
| Brakes | | |
| Service | Hydrostatic (dynamic) braking stops the machine whenever the direction-control lever is moved to neutral or the decelerator is depressed to the detent | |

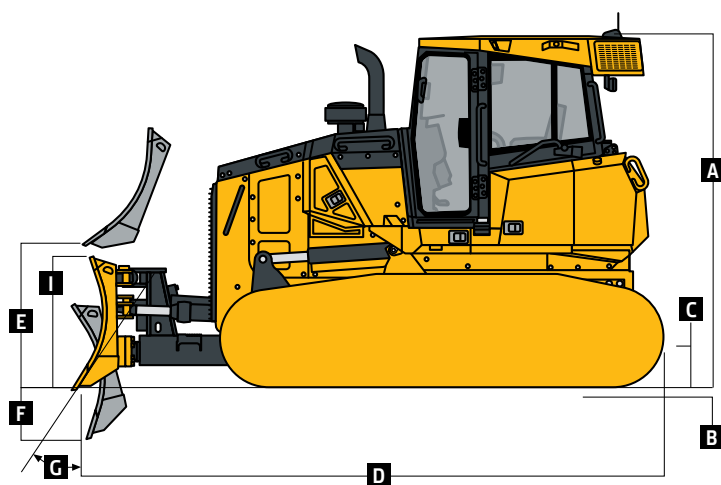




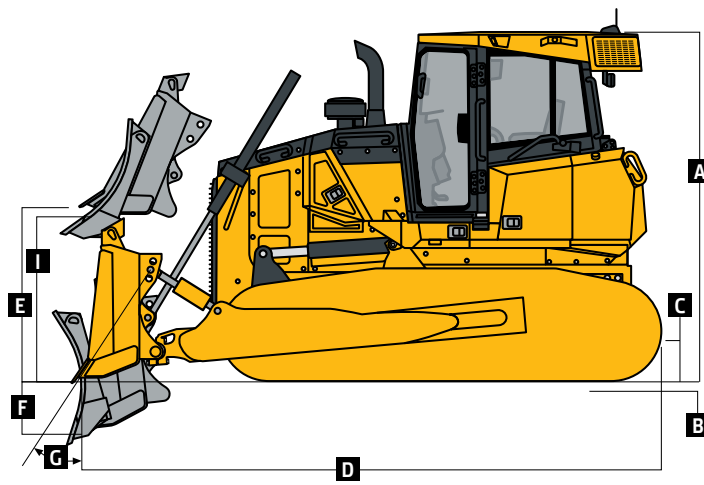
| Powertrain (continued) | | 750K XLT / 750K LGP / 750K | |
|---|---|--|---|
| Brakes (continued) | | | |
| Parking | Exclusive spring-applied, hydraulically released park brake safety feature engages wet, multiple-disc brakes automatically whenever the engine stops, the operator depresses the decelerator pedal to the brake position, the unit is in neutral for 3 seconds (with detected motion), or the park-lock lever is in the park position; machine cannot be driven with brake applied, minimizing wearout or need for adjustment | | |
| Hydraulics | | 750K XLT / 750K LGP | 750K |
| Blade Type | PAT | | OSD |
| Type | Load sense hydraulic system with variable-displacement piston pump | | |
| Pump Displacement | 63 cc | | 63 cc |
| System Relief Pressure | 24 993 kPa (3,625 psi) | | 24 993 kPa (3,625 psi) |
| Differential Pressure | 1896 kPa (275 psi) | | 1896 kPa (275 psi) |
| Maximum Flow at Unloaded High Idle | 138 L/m (36 gpm) | | 138 L/m (36 gpm) |
| Control | 3-function hydraulic-pilot T-bar joystick with push-button angle function | | 2-function hydraulic-pilot T-bar joystick |
| Electrical | | 750K XLT / 750K LGP / 750K | |
| Voltage | 24 volts | | |
| Capacity | | | |
| Battery | 950 CCA | | |
| Reserve | 190 min. | | |
| Alternator Rating | | | |
| Cab | 130 amp | | |
| Canopy | 100 amp | | |
| Lights | Grille mounted (2), rear mounted (2), engine compartment (1), and rear reflectors (2) | | |
| Undercarriage | | 750K XLT | 750K LGP |
| Blade Type | PAT | PAT | OSD |
| Tracks | John Deere Dura-Trax™ features large deep-heat-treated, sealed, and lubricated track links and through-hardened, sealed, and lubricated rollers for maximum wear resistance; sprockets are segmented; extreme-duty shoes are available (on some models) for severe applications | | |
| Track Gauge | 1880 mm (74 in.) | 2134 mm (84 in.) | 1880 mm (74 in.) |
| Grouser Width | 560 mm (22 in.) | 865 mm (34 in.) | 560 mm (22 in.) |
| Chain | Sealed and lubricated | | Sealed and lubricated |
| Shoes, Each Side | 45 | 45 | 40 |
| Track Rollers, Each Side | 8 | 8 | 7 |
| Track Length on Ground | 3073 mm (121 in.) | 3073 mm (121 in.) | 2591 mm (102 in.) |
| Ground Contact Area | 34 344 cm ² (5,323 sq. in.) | 53 077 cm ² (8,227 sq. in.) | 28 957 cm ² (4,488 sq. in.) |
| Ground Pressure | 44.5 kPa (6.46 psi) | 31.5 kPa (4.57 psi) | 52.9 kPa (7.67 psi) |
| Track Pitch | 191 mm (7.5 in.) | 191 mm (7.5 in.) | 191 mm (7.5 in.) |
| Oscillation at Front Roller | ± 135 mm (± 5.3 in.) | ± 127 mm (± 5.0 in.) | ± 110 mm (± 4.3 in.) |
| Operator Station | | 750K XLT / 750K LGP / 750K | |
| ROPS (ISO 3471 – 2008) and FOPS (ISO 3449 – 2005) | | | |
| Serviceability | | | |
| Refill Capacities | | | |
| Fuel Tank with Lockable Cap | 368 L (97.5 gal.) | | |
| Cooling System with Recovery Tank | 40.75 L (10.8 gal.) | | |
| Engine Oil with Filter | 24.6 L (6.5 gal.) | | |
| Reservoir with Filter | | | |
| Transmission | 115 L (30 gal.) | | |
| Hydraulic | 112 L (29.7 gal.) | | |
| Diesel Exhaust Fluid (DEF) Reservoir | 13.6 L (3.6 gal.) | | |

| Operating Weights | 750K XLT | 750K LGP | 750K |
|--|------------------------|------------------------|------------------------|
| Blade Type | PAT | PAT | OSD |
| <i>Base Weight (with standard equipment, rollover protective structure [ROPS], full fuel tank, and 79-kg [175 lb.] operator)</i> | 15 661 kg (34,527 lb.) | 17 121 kg (37,745 lb.) | 15 679 kg (34,566 lb.) |
| Optional Components | | | |
| Cab with Pressurizer and Heater/Air Conditioner | 337 kg (743 lb.) | 337 kg (743 lb.) | 337 kg (743 lb.) |
| ROPS Canopy | | | |
| Heater | 39 kg (85 lb.) | 39 kg (85 lb.) | 39 kg (85 lb.) |
| Front and Door Screens | 84 kg (186 lb.) | 84 kg (186 lb.) | 84 kg (186 lb.) |
| Rear Screen | 23 kg (50 lb.) | 23 kg (50 lb.) | 23 kg (50 lb.) |
| Side Screens | 44 kg (98 lb.) | 44 kg (98 lb.) | 44 kg (98 lb.) |
| Cab with Air Conditioner | | | |
| Front and Door Screens | 79 kg (175 lb.) | 79 kg (175 lb.) | 79 kg (175 lb.) |
| Rear Screen | 34 kg (75 lb.) | 34 kg (75 lb.) | 34 kg (75 lb.) |
| Side Screens | 54 kg (120 lb.) | 54 kg (120 lb.) | 54 kg (120 lb.) |
| Condenser Guard (cab with air conditioner) | 55 kg (121 lb.) | 55 kg (121 lb.) | 55 kg (121 lb.) |
| Limb Risers (ROPS canopy and cab) | 261 kg (575 lb.) | 261 kg (575 lb.) | 261 kg (575 lb.) |
| Heavy-Duty Grille | 28 kg (62 lb.) | 28 kg (62 lb.) | 28 kg (62 lb.) |
| Lift-Cylinder Hose Guards | 42 kg (93 lb.) | 42 kg (93 lb.) | 77 kg (170 lb.) |
| Tank Guards | 323 kg (712 lb.) | 323 kg (712 lb.) | 323 kg (712 lb.) |
| Rear Counterweight | 326 kg (720 lb.) | 326 kg (720 lb.) | 326 kg (720 lb.) |
| Retrieval Hitch | 37 kg (81 lb.) | 37 kg (81 lb.) | 37 kg (81 lb.) |
| Drawbar, Extended Rigid | 130 kg (286 lb.) | 130 kg (286 lb.) | 130 kg (286 lb.) |
| Blade Brush Guard | 87 kg (192 lb.) | 87 kg (192 lb.) | 87 kg (192 lb.) |
| Center Chain Guides | 61 kg (135 lb.) | 61 kg (135 lb.) | 61 kg (135 lb.) |
| Full-Length Rock Guards | 154 kg (340 lb.) | 154 kg (340 lb.) | 174 kg (384 lb.) |
| Track Shoes | | | |
| 560-mm (22 in.) Moderate Duty | In base | — | In base |
| 560-mm (22 in.) Extreme Duty | 134 kg (296 lb.) | — | 119 kg (263 lb.) |
| 610-mm (24 in.) Moderate Duty | 140 kg (309 lb.) | — | 125 kg (275 lb.) |
| 610-mm (24 in.) Extreme Duty | 289 kg (637 lb.) | — | 257 kg (566 lb.) |
| 710-mm (28 in.) Moderate Duty | — | - 418 kg (- 922 lb.) | — |
| 865-mm (34 in.) Moderate Duty | — | In base | — |

| Machine Dimensions | | | |
|---|------------------------|------------------------|------------------------|
| Blade Type | PAT | PAT | OSD |
| A Overall Height to Roof | 3128 mm (10 ft. 3 in.) | 3128 mm (10 ft. 3 in.) | 3128 mm (10 ft. 3 in.) |
| B Tread Depth with Single-Bar Grouser | | | |
| Moderate Duty | 56 mm (2.2 in.) | 56 mm (2.2 in.) | 56 mm (2.2 in.) |
| Extreme Duty | 69 mm (2.7 in.) | 69 mm (2.7 in.) | 69 mm (2.7 in.) |
| C Ground Clearance in Dirt | 356 mm (14 in.) | 356 mm (14 in.) | 356 mm (14 in.) |
| D Overall Length | 4921 mm (16 ft. 5 in.) | 5246 mm (17 ft. 3 in.) | 4937 mm (16 ft. 2 in.) |
| Length with Extended Drawbar | 5210 mm (17 ft. 1 in.) | 5535 mm (18 ft. 2 in.) | 5226 mm (17 ft. 2 in.) |
| E Blade Lift Height | 1025 mm (40.3 in.) | 1025 mm (40.3 in.) | 1050 mm (41.3 in.) |
| F Blade Digging Depth | 650 mm (25.6 in.) | 650 mm (25.6 in.) | 575 mm (22.6 in.) |
| G Blade Cutting-Edge Angle, Adjustable | 55.2 to 60.1 deg. | 55.2 to 60.1 deg. | 50.5 to 60.0 deg. |

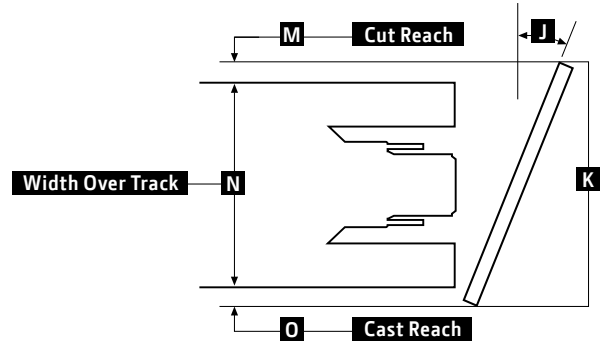
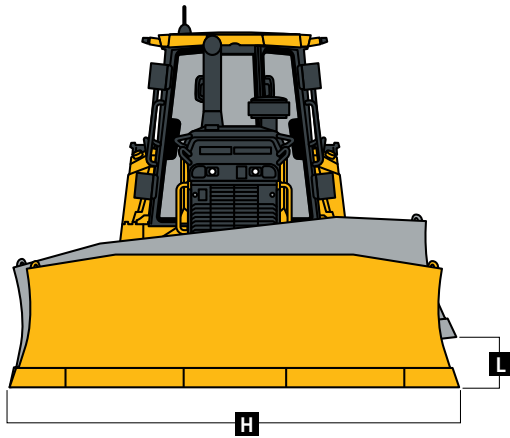


750K XLT / 750K LGP WITH POWER-ANGLE-TILT (PAT) BLADE



750K WITH OUTSIDE DOZER (OSD) BLADE

| Machine Dimensions (continued) | 750K XLT | 750K LGP | 750K |
|---|--------------------------------------|---------------------------------------|------------------------------------|
| Blade Type | PAT | PAT | OSD |
| Semi-U | | | |
| H Blade Width | — | — | 3251 mm (128 in.) (10 ft. 8 in.) |
| I Blade Height | — | — | 1240 mm (48.8 in.) (4 ft. 0.8 in.) |
| SAE Capacity | — | — | 4.3 m ³ (5.6 cu. yd.) |
| Weight | — | — | 1163 kg (2,564 lb.) |
| Push-Beam Assembly Weight (without blade) | — | — | 1470 kg (3,242 lb.) |
| L Blade Tilt | — | — | 711 mm (28 in.) |
| N Width Over Track | — | — | 2438 mm (96 in.) (8 ft. 0 in.) |
| Straight | | | |
| H Blade Width | 3296 mm (130 in.) (10 ft. 10 in.) | 3962 mm (156 in.) (13 ft. 0 in.) | — |
| I Blade Height | 1194 mm (47 in.) (3 ft. 11 in.) | 1170 mm (46.1 in.) (3 ft. 10.1 in.) | — |
| SAE Capacity | 2.2 m ³ (4.2 cu. yd.) | 3.8 m ³ (5.0 cu. yd.) | — |
| Weight | 937 kg (2,066 lb.) | 1081 kg (2,383 lb.) | — |
| C-Frame Assembly Weight (without blade) | 1318 kg (2,905 lb.) | 1318 kg (2,905 lb.) | — |
| J Blade Angle | 23.5 deg. | 23.5 deg. | — |
| K Overall Width with Blade Angled | 3020 mm (118.9 in.) (9 ft. 10.9 in.) | 3631 mm (142.9 in.) (11 ft. 10.9 in.) | — |
| L Blade Tilt (uses tilt jack) | 437 mm (17.2 in.) | 524 mm (20.6 in.) | — |
| M Cut Reach | 108 mm (4.3 in.) | 84 mm (3.3 in.) | — |
| N Width Over Track | 2438 mm (96 in.) (8 ft. 0 in.) | 2997 mm (118 in.) (9 ft. 10 in.) | — |
| O Cast Reach | 224 mm (8.8 in.) | 297 mm (11.7 in.) | — |

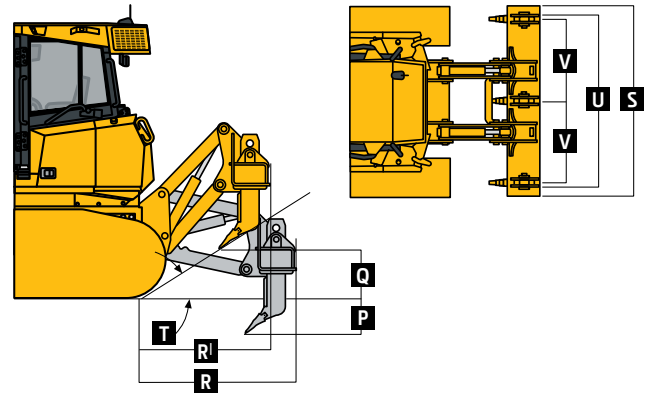


Rear Ripper

750K XLT / 750K LGP / 750K

Multi-shank (3) parallelogram ripper with hydraulic pitch adjustment and ESCO® ripper tips

| | |
|---|-----------------------|
| Weight | 1690 kg (3,725 lb.) |
| P Maximum Penetration | 686 mm (27 in.) |
| Q Maximum Clearance Under Tip | 686 mm (27 in.) |
| R Overall Length, Lowered Position | 1689 mm (5 ft. 7 in.) |
| Rl Overall Length, Raised Position | 1448 mm (4 ft. 9 in.) |
| S Overall Beam Width | 2134 mm (7 ft. 0 in.) |
| T Slope Angle (full raise) | 22 deg. |
| U Ripping Width | 1880 mm (6 ft. 2 in.) |
| V Distance Between Shanks | 902 mm (3 ft. 0 in.) |



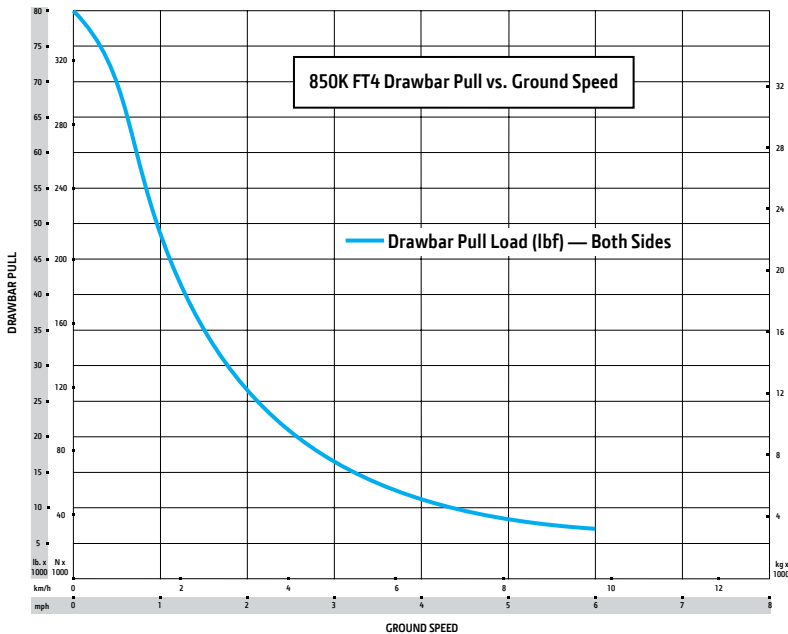
850K

| Engine | 850K XLT / 850K WLT / 850K LGP | 850K / 850K WT / 850K LGP |
|----------------------------|--|--|
| Blade Type | Power-Angle-Tilt (PAT) | Outside Dozer (OSD) |
| Manufacturer and Model | John Deere PowerTech™ PSS 6068 | John Deere PowerTech PSS 6068 |
| Non-Road Emission Standard | EPA Final Tier 4/EU Stage IV | EPA Final Tier 4/EU Stage IV |
| Displacement | 6.8L (414 cu. in.) | 6.8L (414 cu. in.) |
| SAE Net Rated Power | 152 kW (205 hp) at 1,800 rpm | 152 kW (205 hp) at 1,800 rpm |
| Net Peak Torque | 915 Nm (675 ft.-lb.) at 1,500 rpm | 915 Nm (675 ft.-lb.) at 1,500 rpm |
| Aspiration | Turbocharged with charge-air cooler | Turbocharged with charge-air cooler |
| Air Cleaner | Vacuum-aspirated dual-element dry canister | Vacuum-aspirated dual-element dry canister |
| Cooling | 850K XLT / 850K WLT / 850K LGP / 850K / 850K WT | |
| Type | Variable-speed suction fan with automatic reversing | |
| Engine Coolant Rating | -37 deg. C. (-34 deg. F) | |
| Engine Radiator | 10 fins per in. | |

| Powertrain | |
|------------------------|---|
| Transmission | Automatic, dual-path, hydrostatic drive; load-sensing feature automatically adjusts speed and power to match changing load conditions; each individually controlled track is powered by a variable-displacement piston pump and motor combination; ground-speed selection buttons on single-lever steering and direction control; independently selectable reverse speed ratios of 100%, 115%, or 130% of forward ground speed; decelerator pedal controls ground speed to stop |
| System Relief Pressure | 45 850 kPa (6,650 psi) |
| Travel Speeds | |
| Forward and Reverse | 9.7 km/h (6.0 mph) |
| Maximum (optional) | 11.0 km/h (6.8 mph) |
| Steering | Single-lever steering, speed, direction control, and counter-rotation; full power turns and infinitely variable track speeds provide unlimited maneuverability and optimum control; hydrostatic steering eliminates steering clutches and brakes |
| Final Drives | Double-reduction, planetary final drives mounted independently of track frames and dozer push frames for isolation from shock loads |
| Total Ratio | 44.75 to 1 |

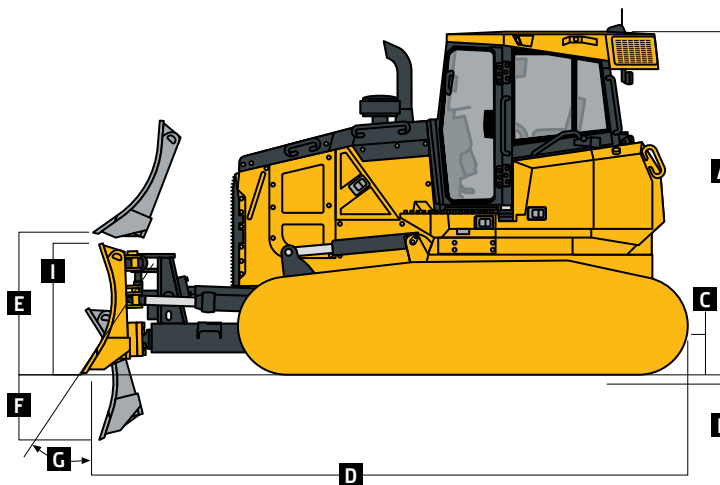
| Drawbar Pull | |
|-----------------------|---------------------|
| Maximum | 356 kN (80,000 lb.) |
| At 1.9 km/h (1.2 mph) | 178 kN (40,000 lb.) |
| At 3.2 km/h (2.0 mph) | 131 kN (29,500 lb.) |

| Brakes | |
|---------|---|
| Service | Hydrostatic (dynamic) braking stops machine whenever the direction/steering-control lever is moved to neutral or the decelerator is depressed to the end of travel |
| Parking | Exclusive spring-applied, hydraulically released park brake safety feature engages wet, multiple-disc brakes automatically whenever the engine stops, the operator depresses the decelerator pedal to the brake position, the unit is in neutral for 3 seconds (with detected motion), or the park-lock lever is in the park position; machine cannot be driven with brake applied, minimizing wearout or need for adjustment |

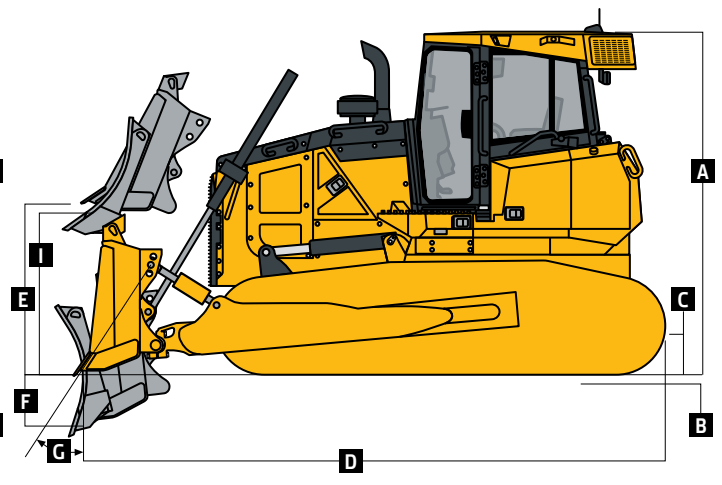


| Hydraulics | 850K XLT / 850K WLT / 850K LGP | 850K / 850K WT / 850K LGP |
|------------------------|--|---------------------------|
| Blade Type | PAT | OSD |
| Type | Load-sense hydraulic system with variable-displacement piston pump | |
| Pump Displacement | 74 cc | 74 cc |
| System Relief Pressure | 24 993 kPa (3,625 psi) | 24 993 kPa (3,625 psi) |
| Differential Pressure | 1896 kPa (275 psi) | 1896 kPa (275 psi) |

| Operating Weights (continued) | 850K XLT | 850K WLT | 850K LGP | 850K | 850K WT | 850K LGP |
|---|--------------------------|-------------------------|--------------------------|------------------------|--------------------------|------------------------|
| Blade Type | PAT | PAT | PAT | OSD | OSD | OSD |
| Optional Components (continued) | | | | | | |
| Heavy-Duty Grille | 35 kg (78 lb.) | 35 kg (78 lb.) | 35 kg (78 lb.) | 35 kg (78 lb.) | 35 kg (78 lb.) | 35 kg (78 lb.) |
| Lift-Cylinder Hose Guards | 42 kg (93 lb.) | 42 kg (93 lb.) | 42 kg (93 lb.) | 80 kg (176 lb.) | 80 kg (176 lb.) | 80 kg (176 lb.) |
| Tank Guards | 323 kg (712 lb.) | 323 kg (712 lb.) | 323 kg (712 lb.) | 323 kg (712 lb.) | 323 kg (712 lb.) | 323 kg (712 lb.) |
| Counterweight | | | | | | |
| Front | 397 kg (875 lb.) | 397 kg (875 lb.) | 397 kg (875 lb.) | 397 kg (875 lb.) | 397 kg (875 lb.) | 397 kg (875 lb.) |
| Rear | 449 kg (990 lb.) | 449 kg (990 lb.) | 449 kg (990 lb.) | 449 kg (990 lb.) | 449 kg (990 lb.) | 449 kg (990 lb.) |
| Retrieval Hitch | 52 kg (114 lb.) | 52 kg (114 lb.) | 52 kg (114 lb.) | 52 kg (114 lb.) | 52 kg (114 lb.) | 52 kg (114 lb.) |
| Drawbar, Extended Rigid | 130 kg (286 lb.) | 130 kg (286 lb.) | 130 kg (286 lb.) | 130 kg (286 lb.) | 130 kg (286 lb.) | 130 kg (286 lb.) |
| Blade Brush Guard | 87 kg (192 lb.) | 87 kg (192 lb.) | 87 kg (192 lb.) | 87 kg (192 lb.) | 87 kg (192 lb.) | 87 kg (192 lb.) |
| Blade Trash Rack | — | 198 kg (436 lb.) | 210 kg (462 lb.) | — | 207 kg (455 lb.) | 226 kg (498 lb.) |
| Center Chain Guides | 85 kg (188 lb.) | 85 kg (188 lb.) | 85 kg (188 lb.) | 85 kg (188 lb.) | 85 kg (188 lb.) | 85 kg (188 lb.) |
| Full-Length Rock Guards | 242 kg (534 lb.) | 242 kg (534 lb.) | 242 kg (534 lb.) | 222 kg (490 lb.) | 222 kg (490 lb.) | 242 kg (534 lb.) |
| Final-Drive Trash Guards | 70 kg (155 lb.) | 70 kg (155 lb.) | 70 kg (155 lb.) | 70 kg (155 lb.) | 70 kg (155 lb.) | 70 kg (155 lb.) |
| Striker Bars | | | | | | |
| Front | — | 73 kg (160 lb.) | 73 kg (160 lb.) | — | 111 kg (245 lb.) | 147 kg (325 lb.) |
| Rear | — | 78 kg (171 lb.) | 78 kg (171 lb.) | — | 166 kg (366 lb.) | 78 kg (171 lb.) |
| Pre-Cleaner | | | | | | |
| Powered Cab Air | 21 kg (47 lb.) | 21 kg (47 lb.) | 21 kg (47 lb.) | 21 kg (47 lb.) | 21 kg (47 lb.) | 21 kg (47 lb.) |
| Rotary Ejector Engine Air | 6 kg (13 lb.) | 6 kg (13 lb.) | 6 kg (13 lb.) | 6 kg (13 lb.) | 6 kg (13 lb.) | 6 kg (13 lb.) |
| Track Shoes | | | | | | |
| 560-mm (22 in.) Extreme Duty | 175 kg (385 lb.) | — | — | 155 kg (342 lb.) | -213 kg (-470 lb.) | — |
| 610-mm (24 in.) Moderate Duty | In base | — | -850 kg (-1,873 lb.) | In base | -368 kg (-812 lb.) | -847 kg (-1,868 lb.) |
| 610-mm (24 in.) Extreme Duty | 346 kg (762 lb.) | — | -504 kg (-1,111 lb.) | 307 kg (677 lb.) | -61 kg (-135 lb.) | -502 kg (-1,108 lb.) |
| 760-mm (30 in.) Moderate Duty | — | In base | -435 kg (-959 lb.) | — | In base | — |
| 760-mm (30 in.) Extreme Duty | — | 444 kg (979 lb.) | 9 kg (19 lb.) | — | 395 kg (870 lb.) | — |
| 910-mm (36 in.) Moderate Duty | — | — | In base | — | — | In base |
| 910-mm (36 in.) Extreme Duty | — | — | 524 kg (1,155 lb.) | — | — | 523 kg (1,153 lb.) |
| Machine Dimensions | | | | | | |
| A Overall Height to Roof | 3211 mm (10 ft. 6.5 in.) | | 3211 mm (10 ft. 6.5 in.) | | 3211 mm (10 ft. 6.5 in.) | |
| B Tread Depth with Single-Bar Grouser | 66 mm (2.6 in.) | | 66 mm (2.6 in.) | | 66 mm (2.6 in.) | |
| Moderate Duty | 66 mm (2.6 in.) | 66 mm (2.6 in.) | 66 mm (2.6 in.) | 66 mm (2.6 in.) | 66 mm (2.6 in.) | 66 mm (2.6 in.) |
| Extreme Duty | 71 mm (2.8 in.) | 71 mm (2.8 in.) | 71 mm (2.8 in.) | 71 mm (2.8 in.) | 71 mm (2.8 in.) | 71 mm (2.8 in.) |
| C Ground Clearance in Dirt | 409 mm (16.1 in.) | | 409 mm (16.1 in.) | | 409 mm (16.1 in.) | |
| D Overall Length | 5740 mm (18 ft. 10 in.) | 5740 mm (18 ft. 10 in.) | 5740 mm (18 ft. 10 in.) | 5384 mm (17 ft. 8 in.) | 5384 mm (17 ft. 8 in.) | 5940 mm (19 ft. 6 in.) |
| Length with Extended Drawbar | 5937 mm (19 ft. 6 in.) | 5937 mm (19 ft. 6 in.) | 5937 mm (19 ft. 6 in.) | 5569 mm (18 ft. 3 in.) | 5569 mm (18 ft. 3 in.) | 6137 mm (20 ft. 2 in.) |
| E Blade Lift Height | 1072 mm (3 ft. 6 in.) | 1072 mm (3 ft. 6 in.) | 1072 mm (3 ft. 6 in.) | 1151 mm (3 ft. 9 in.) | 1151 mm (3 ft. 9 in.) | 1151 mm (3 ft. 9 in.) |
| F Blade Digging Depth | 704 mm (28 in.) | 704 mm (28 in.) | 704 mm (28 in.) | 599 mm (24 in.) | 599 mm (24 in.) | 599 mm (24 in.) |
| G Blade Cutting-Edge Angle, Adjustable | 55.1 to 60.2 deg. | 55.1 to 60.2 deg. | 55.1 to 60.2 deg. | 51.5 to 61.0 deg. | 51.5 to 61.0 deg. | 51.5 to 61.0 deg. |

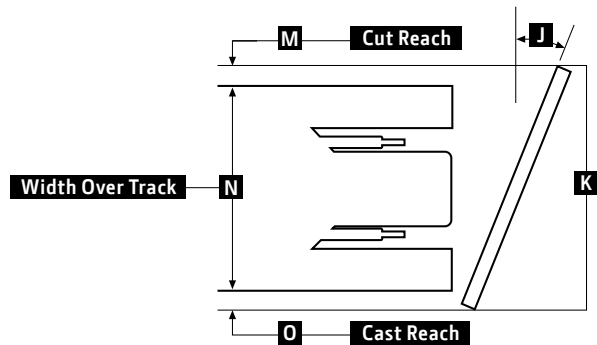
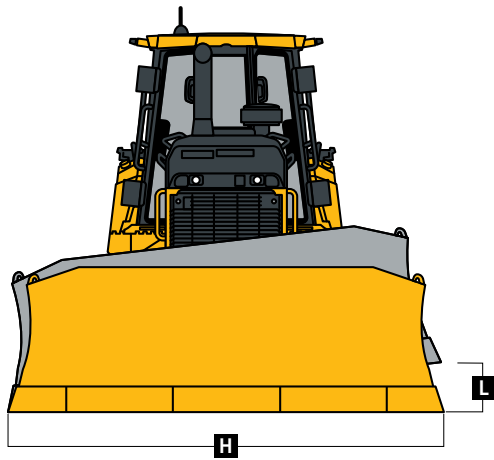


850K XLT / 850K WLT / 850K LGP WITH POWER-ANGLE-TILT (PAT) BLADE



850K / 850K WT / 850K LGP WITH OUTSIDE DOZER (OSD) BLADE

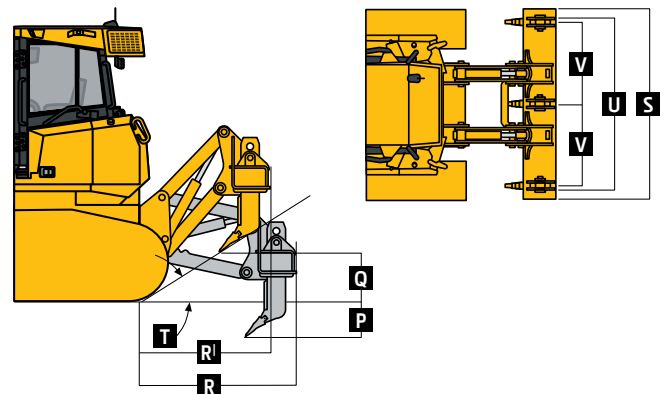
| Machine Dimensions (continued) | 850K XLT | 850K WLT | 850K LGP | 850K | 850K WT | 850K LGP |
|---|-------------------------------------|-------------------------------------|--------------------------------------|-------------------------------------|-------------------------------------|---------------------------------------|
| Blade Type | <i>PAT</i> | <i>PAT</i> | <i>PAT</i> | <i>OSD</i> | <i>OSD</i> | <i>OSD</i> |
| | | | | Semi-U | | |
| H Blade Width | — | — | — | 3251 mm (128 in.) (10 ft. 8 in.) | 3556 mm (140 in.) (11 ft. 8 in.) | 3861 mm (152 in.) (12 ft. 8 in.) |
| I Blade Height | — | — | — | 1422 mm (56 in.) (4 ft. 8 in.) | 1374 mm (54 in.) (4 ft. 6 in.) | 1321 mm (52 in.) (4 ft. 4 in.) |
| SAE Capacity | — | — | — | 5.6 m ³ (7.3 cu. yd.) | 5.8 m ³ (7.6 cu. yd.) | 6.0 m ³ (7.8 cu. yd.) |
| Weight | — | — | — | 1643 kg (3,286 lb.) | 1567 kg (3,455 lb.) | 1641 kg (3,612 lb.) |
| Push-Beam Assembly Weight (without blade) | — | — | — | 1820 kg (4,004 lb.) | 1889 kg (4,156 lb.) | 2101 kg (4,622 lb.) |
| L Blade Tilt | — | — | — | 753 mm (30 in.) | 753 mm (30 in.) | 853 mm (34 in.) |
| N Width Over Track | — | — | — | 2489 mm (98 in.) (8 ft. 2 in.) | 2794 mm (110 in.) (9 ft. 2 in.) | 3099 mm (122 in.) (10 ft. 2 in.) |
| | PAT | | | Straight | | |
| H Blade Width | 3708 mm (146 in.) (12 ft. 2 in.) | 4013 mm (158 in.) (13 ft. 2 in.) | 4267 mm (168 in.) (14 ft. 0 in.) | — | — | 3912 mm (154 in.) (12 ft. 10 in.) |
| I Blade Height | 1229 mm (48 in.) (4 ft. 0 in.) | 1229 mm (48 in.) (4 ft. 0 in.) | 1229 mm (48 in.) (4 ft. 0 in.) | — | — | 1258 mm (49.5 in.) (4 ft. 1.5 in.) |
| SAE Capacity | 3.9 m ³ (5.2 cu. yd.) | 4.3 m ³ (5.6 cu. yd.) | 4.5 m ³ (5.9 cu. yd.) | — | — | 4.1 m ³ (5.4 cu. yd.) |
| Weight | 1251 kg (2,758 lb.) | 1330 kg (2,932 lb.) | 1397 kg (3,080 lb.) | — | — | 1561 kg (3,441 lb.) |
| C-Frame Assembly Weight (without blade) | 1647 kg (3,631 lb.) | 1647 kg (3,631 lb.) | 1647 kg (3,631 lb.) | — | — | 2101 kg (4,622 lb.) |
| J Blade Angle | 23.8 deg. | 23.8 deg. | 23.8 deg. | — | — | — |
| K Overall Width with Blade Angled | 3391 mm (134 in.) (11 ft. 2 in.) | 3658 mm (144 in.) (12 ft. 0 in.) | 3901 mm (154 in.) (12 ft. 10 in.) | — | — | — |
| L Blade Tilt (uses tilt jack) | 508 mm (20 in.) | 533 mm (21 in.) | 572 mm (23 in.) | — | — | — |
| M Cut Reach | 158 mm (6.2 in.) | 145 mm (5.7 in.) | 109 mm (4.3 in.) | — | — | — |
| N Width Over Track | 2693 mm (106 in.) (8 ft. 10 in.) | 2997 mm (118 in.) (9 ft. 10 in.) | 3302 mm (130 in.) (10 ft. 10 in.) | — | — | — |
| O Cast Reach | 284 mm (11.2 in.) | 272 mm (10.7 in.) | 234 mm (9.2 in.) | — | — | — |



Rear Ripper 850K XLT / 850K WLT / 850K LGP / 850K / 850K WT

Multi-shank (3) parallelogram ripper with hydraulic pitch adjustment and ESCO® ripper tips

| | |
|--|------------------------|
| Weight | 2032 kg (4,480 lb.) |
| P Maximum Penetration | 724 mm (28.5 in.) |
| Q Maximum Clearance Under Tip | 610 mm (24 in.) |
| R Overall Length, Lowered Position | 1626 mm (5 ft. 4 in.) |
| R^l Overall Length, Raised Position | 1525 mm (5 ft. 0 in.) |
| S Overall Beam Width | 2400 mm (7 ft. 10 in.) |
| T Slope Angle (full raise) | 24 deg. |
| U Ripping Width | 2146 mm (7 ft. 1 in.) |
| V Distance Between Shanks | 1041 mm (3 ft. 5 in.) |



Additional equipment

Key: ● Standard ▲ Optional or special

See your John Deere dealer for further information.

| 750K | 850K | Engine |
|------------|------|--|
| ● | ● | Meets EPA Final Tier 4/EU Stage IV emissions |
| ● | ● | John Deere PowerTech™ PVS 6.8L engine |
| | ● | John Deere PowerTech™ PSS 6.8L engine |
| ● | ● | Wet-sleeve cylinder liners |
| ● | ● | Eco mode |
| ● | ● | Exhaust stack, black |
| ▲ | ▲ | Exhaust stack, chrome |
| ● | ● | Electronic control with automatic engine protection |
| ● | ● | Turbocharged and air-to-air aftercooled |
| ● | ● | Dual-element dry canister with external rotary ejector precleaner |
| ● | ● | Programmable auto engine shutdown |
| ● | ● | Automatic turbo cool-down timer |
| ● | ● | Fuel filters with automatic electronic priming |
| ▲ | ▲ | Severe-duty fuel filter |
| ▲ | ▲ | Engine block heater |
| ▲ | ▲ | Engine coolant heater, fuel fired |
| ▲ | ▲ | 100-amp alternator (canopy) |
| ▲ | ▲ | 130-amp alternator (cab) |
| Cooling | | |
| ● | ● | Tilt-out cooling fan, hydraulically driven, variable-speed suction type |
| ● | ● | Engine cooling rated –37 deg. C (–34 deg. F) |
| ● | ● | Automatic, programmable reversing fan |
| ● | ● | Engine radiator, 10 fins per in. |
| ● | ● | Hydrostatic (HST) cooler, 10 fins per in. |
| ● | ● | Hydraulic cooler, 10 fins per in. |
| ● | ● | Enclosed safety fan guard (conforms to SAE J1308 and ISO 3457) |
| ● | ● | Cooling package isolated from engine compartment |
| ● | ● | Heavy-duty, trash-resistant radiator and high-ambient cooling package |
| Powertrain | | |
| ● | ● | Dual-path HST transmission |
| ● | ● | Selectable reverse-speed ratios |
| ● | ● | Operator-selectable decelerator function (hydrostats and engine or hydrostats only) |
| ● | ● | Single-lever steering with counter-rotate function |
| ● | ● | Full power turns with infinitely variable track speed |
| ● | ● | HST (dynamic) service brakes |
| ● | ● | Wet, multi-disc parking brake |
| ● | ● | Remote diagnostic test ports |
| ● | ● | Automatic cold-weather transmission warm-up system |
| ● | ● | Automatic transmission derating for exceeded system temperatures |
| ● | ● | Sealed dedicated transmission reservoir and filtration system separate from hydraulic system |

| 750K | 850K | Hydraulic System |
|--------------------|------|--|
| ● | ● | Load-sense electrohydraulic (EH) system with variable-displacement piston pump |
| ● | ● | 2-function hydraulics |
| ▲ | ▲ | 3-function hydraulics |
| ▲ | ▲ | 3-function hydraulics with rear plumbing |
| ▲ | ▲ | 4-function hydraulics with rear plumbing |
| ▲ | ▲ | Grade-control-ready EH hydraulics |
| ● | ● | Hydrau™ All-Season Hydraulic Oil, –25 deg. C to 50 deg. C (–13 deg. F to 122 deg. F) |
| ▲ | ▲ | Hydrau™ XR Hydraulic Oil, –40 deg. C to 40 deg. C (–40 deg. F to 104 deg. F) |
| ▲ | ▲ | Power pitch for outside dozer |
| ● | ● | Hydraulic pump, standard |
| ▲ | ▲ | Hydraulic pump, high flow |
| ▲ | ▲ | Hydraulic pump for direct-drive winch |
| ● | ● | Sealed dedicated hydraulic reservoir and filtration system separate from transmission system |
| Undercarriage | | |
| ● | ● | Full-length, smooth-surface track frame covers |
| ● | ● | Guides, front and rear, with wear strips |
| ● | ● | Segmented sprockets |
| ● | ● | Double-flange rollers |
| ● | ● | Oscillating undercarriage |
| ● | ● | Heavy-duty sealed and lubricated undercarriage |
| ▲ | ▲ | Extended life undercarriage SC-2™ bushings |
| ▲ | ▲ | Full-length rock guards |
| | ▲ | Recessed sprockets |
| Operator's Station | | |
| ▲ | ▲ | Canopy cab |
| ▲ | ▲ | Enclosed cab with air/heat |
| ● | ● | Retractable seat belt, 76 mm (3 in.) (conforms to SAE J386) |
| ▲ | ▲ | Air-suspension vinyl seat (canopy) |
| ▲ | ▲ | Air-suspension cloth seat (enclosed cab) |
| ▲ | ▲ | Air-suspension heated deluxe seat (enclosed cab) |
| ● | ● | AM/FM radio |
| ▲ | ▲ | XM Satellite Radio™ |
| ▲ | ▲ | HVAC-powered precleaner |
| ● | ● | Tilting cab |
| ● | ● | Multifunction, multi-language LCD monitor |
| ▲ | ▲ | 178-mm (7 in.) color, multi-language Primary Display Unit (PDU) (with EH hydraulics only) |
| ● | ● | Backup alarm |
| ● | ● | 12-volt accessory plug (1) |
| ▲ | ▲ | 12-volt accessory plug (2) |
| ● | ● | Keyless start |
| ▲ | ▲ | Rear attachments mirror |
| ● | ● | Convex interior rearview mirror |
| ● | ● | Lockable, dash-mounted storage compartment |
| ● | ● | Cup holders (2) |
| Overall Vehicle | | |
| ● | ● | Tilt operator station service access |
| ● | ● | Environmental drain package |
| ▲ | ▲ | Fluid-sample valves |

| 750K | 850K | Overall Vehicle (continued) | | | |
|-------------|------|---|---|-----|---|
| ● | ● | JDLink™ Ultimate wireless machine communication system (available in specific countries; see your local dealer for details) | | | |
| ▲ | ▲ | Quick service ports (HST, hydraulic, and engine oil, and coolant) | | | |
| ▲ | ▲ | Fast-fuel system | | | |
| ● | ● | Lights, grille mounted (2), rear mounted (2) | | | |
| ▲ | ▲ | Additional lights (2) | | | |
| ● | ● | Engine-compartment light | | | |
| ▲ | ▲ | Beacon light | | | |
| ▲ | ▲ | Topcon grade-control system | | | |
| ▲ | ▲ | Topcon-ready interface package | | | |
| ▲ | ▲ | Trimble-ready interface package | | | |
| ▲ | ▲ | Leica-ready interface package | | | |
| ▲ | ▲ | Forestry protection package | | | |
| ● | ● | Master electrical disconnect switch | | | |
| Attachments | | | | | |
| | ▲ | Landfill package | | | |
| ▲ | ▲ | Pitch jack | | | |
| ▲ | ▲ | Rollover Protective Structure (ROPS) heater | | | |
| ▲ | ▲ | Cab mounts and isolators for forestry package | | | |
| ▲ | ▲ | Large debris prescreen | | | |
| ▲ | ▲ | Full-length rock guards | | | |
| ▲ | ▲ | Recessed sprockets | | | |
| ▲ | ▲ | Final-drive trash guards (trash applications) | | | |
| ▲ | ▲ | Rear ripper/scarifier | | | |
| ▲ | ▲ | Rear counterweight (1 or 2) | | | |
| ▲ | ▲ | Heavy-duty grille | | | |
| ▲ | ▲ | Retrieval hitch with 1 or 2 counterweights | | | |
| ▲ | ▲ | Extended rigid drawbar | | | |
| ▲ | ▲ | Extended rigid drawbar with 2 counterweights | | | |
| ▲ | ▲ | Rear storage compartment | | | |
| ▲ | ▲ | Corrosion prevention | | | |
| STD | XLT | LGP | 750K Shoes | | |
| ● | ● | ▲ | 560-mm (22 in.) moderate service | | |
| ▲ | ▲ | ▲ | 560-mm (22 in.) extreme service | | |
| ▲ | ▲ | ▲ | 610-mm (24 in.) moderate service | | |
| ▲ | ▲ | ▲ | 610-mm (24 in.) extreme service | | |
| | | ▲ | 710-mm (28 in.) moderate service | | |
| | | ● | 865-mm (34 in.) moderate service with clipped corners | | |
| STD | WT | XLT | WLT | LGP | 850K Shoes |
| ▲ | ▲ | ▲ | ▲ | ▲ | 560-mm (22 in.) extreme service |
| ● | ▲ | ● | ▲ | ▲ | 610-mm (24 in.) moderate service |
| ▲ | ▲ | ▲ | ▲ | ▲ | 610-mm (24 in.) extreme service |
| | ● | ● | ▲ | ▲ | 760-mm (30 in.) moderate service with clipped corners |
| | ▲ | ▲ | ▲ | ▲ | 760-mm (30 in.) extreme service with clipped corners |
| | | | ● | ▲ | 910-mm (36 in.) moderate service with clipped corners |
| | | | ▲ | ▲ | 910-mm (36 in.) extreme service with clipped corners |

Net engine power is with standard equipment including air cleaner, exhaust system, alternator, and cooling fan at test conditions specified per ISO9249. No derating is required up to 3050-m (10,000 ft.) altitude. Also available: winches, fair-leads, log arches, skidding grapples, trash packages, landfill protection packages, cable plows, side booms, field-installed cab for canopy, canopy heater, and fire-suppression systems. Specifications and design subject to change without notice. Wherever applicable, specifications are in accordance with SAE standards. Except where otherwise noted, these specifications are based on units with ROPS, full fuel tanks, and 79-kg (175 lb.) operators; 750K XLT unit with rigid drawbar, 560-mm (22 in.) track shoes, and PAT blade; 750K LGP unit with rigid drawbar, 865-mm (34 in.) track shoes, and PAT blade; 750K unit with rigid drawbar, 560-mm (22 in.) track shoes, and OSD blade; 850K WT unit with 760-mm (30 in.) track shoes and OSD blade; 850K XLT unit with 610-mm (24 in.) track shoes and PAT blade; 850K WLT unit with 760-mm (30 in.) track shoes and PAT blade; 850K LGP unit with 910-mm (36 in.) track shoes and OSD or PAT blade; and 850K unit with 610-mm (24 in.) track shoes and OSD blade. Operator station ROPS and FOPS certified.

