

670G LC/870G LC

69 900–85 600-kg (154,103–188,716 lb.) Operating Weight




JOHN DEERE



Expect big things.

When the task demands a serious excavator to get things done, get a John Deere G-Series. With more hydraulic flow than their highly productive predecessors, our 670G LC and 870G LC deliver faster work cycles to move more material on a gallon of fuel. Rugged EPA Final Tier 4 (FT4)/EU Stage IV diesel engines meet rigid emission regulations, enabling you to work, wherever there's work — without compromising power, reliability, or ease of operation.



Key Specifications	670G LC	870G LC
Net rated power	345 kW (463 hp)	382 kW (512 hp)
Operating weight	69 900 kg (154,103 lb.)	85 600 kg (188,716 lb.)
Maximum digging depth	9.15 m (30 ft. 0 in.)	9.57 m (31 ft. 5 in.)
Arm digging force	224–231 kN (50,357–51,931 lb.)	273–280 kN (61,373–62,946 lb.)
Bucket digging force	290–324 kN (65,195–72,838 lb.)	359–399 kN (80,706–89,699 lb.)

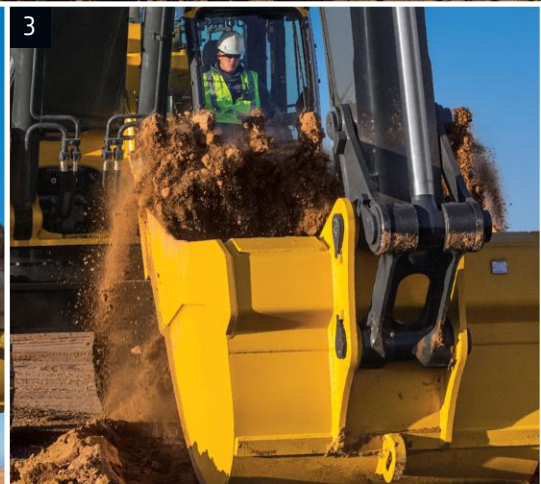
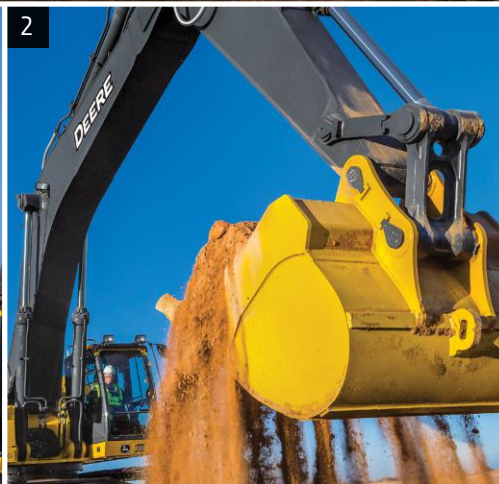
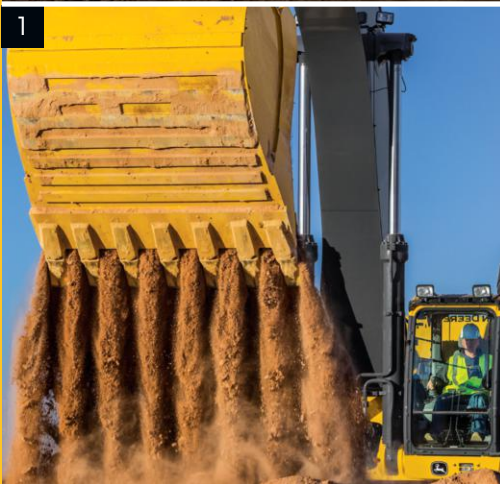


EERE



Smart choice.

The 670G LC and 870G LC aren't all brawn and no brains. Smart features like our Powerwise™ III engine/hydraulic-management system with multiple productivity modes enable you to put that extra ability to use with the same kind of smooth precision that operators have come to expect from Deere excavators.



Powerwise III perfectly balances engine performance and hydraulic flow for predictable operation. Three productivity modes allow you to choose the digging style that fits the job. **High productivity** delivers more power and faster hydraulic response to move more material. **Power** provides smooth and balanced metering for normal operation. **Economy** reduces top speed and helps save fuel.

Choose from a variety of track widths, arm lengths, buckets, and other productivity-boosting options.



1. For work that requires extra finesse, short-throw low-effort controls, unmatched metering, and smooth multifunction operation give you the precision you need.

2. Their exceptional swing torque, lift capacity, and arm and bucket digging forces provide generous muscle for mass excavating or hot truck loading.

3. When conditions call for a little extra, simply press the power-boost button on the right-hand control and muscle through.



Here's a new twist on operating ease.

Now it's easier than ever for your operators to "dial things up." The G-Series' refined monitor employs a turn-and-tap rotary control that provides quick access to an abundance of performance and convenience features and functions. Operators will also appreciate the quiet and spacious cab, unsurpassed all-around visibility, and numerous other amenities that provide everything your operators need to do their best work.

Thanks to a wide expanse of front, side, and overhead glass and mirrors, visibility to the sides and rear is unobstructed, even with the increased under-the-hood space requirements of FT4/Stage IV components.

We've got your back with a sculpted and heated air-suspension high-back seat. Seat has 318 mm (12.5 in.) of travel, sliding together or independent of the joystick console. So it won't cramp an operator's style.

Ergonomically correct short-throw pilot levers provide smooth, predictable fingertip control with less movement or effort. Push buttons in the right lever allow fingertip control of auxiliary hydraulic flow for operating attachments.

1. Multi-language LCD monitor and rotary dial provide intuitive access to a wealth of information and functions. Just turn and tap to select work mode, access operating info, check maintenance intervals, source diagnostic codes, adjust cab temperature, and tune the radio. Plus much more.
2. Standard boom/frame lights and cab/boom-mounted options provide illumination to extend your workday beyond daytime hours. Standard cab lights and right-hand boom light further dispel the dark when needed.
3. Automatic, high-velocity, bi-level climate-control system with automotive-style adjustable louvers helps keep the glass clear and the cab comfortable.



Nothing runs like a Deere, because nothing is built like one.

Both 670G LC and 870G LC employ many of the same job-proven digging structures and hydraulic, electrical, and undercarriage components as their highly regarded D-Series predecessors. When you know how they're built, you'll run a Deere.

To meet stringent FT4/Stage IV standards, we built on our EPA Interim Tier 4 (IT4)/EU Stage IIIB solution to deliver the best combination of performance, efficiency, and reliability without sacrificing power or torque. Our field-proven technology is simple, fluid efficient, fully integrated, and fully supported. It employs field-proven cooled exhaust gas recirculation (EGR), a diesel oxidation catalyst (DOC), and selective catalytic reduction (SCR). Improved piston design allows particulate matter to be burned in the cylinder, so there's no need for a diesel particulate filter (DPF), saving service time and lowering operating costs.



1. Highly efficient, hydraulically driven fans run only as fast as needed, reducing noise, fuel consumption, and operating costs. Reversing option back-blows cooler cores to keep them clean at the touch of a button.

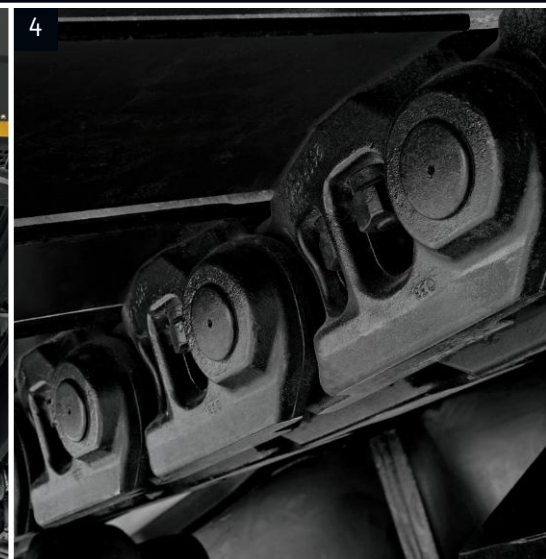




2. A John Deere exclusive, three welded bulkheads within the boom resist torsional stress for unsurpassed durability. Booms, arms, and mainframes are so tough, they're warranted for three years or 10,000 hours.

3. Thick-plate single-sheet mainframe, box-section track frames, and industry-exclusive double-seal swing bearing deliver rock-solid durability.

4. With strutted links and large idlers and rollers, the sealed and lubricated heavy-duty undercarriage delivers long and reliable performance.

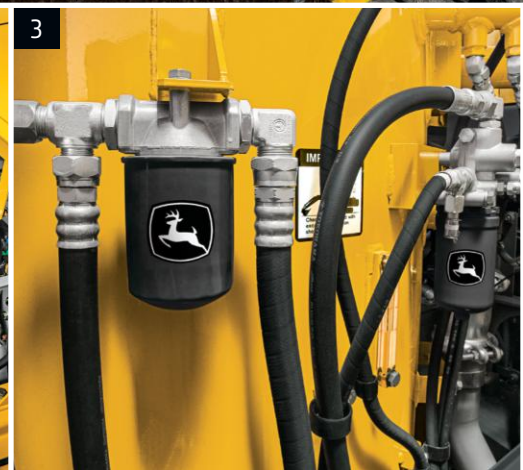
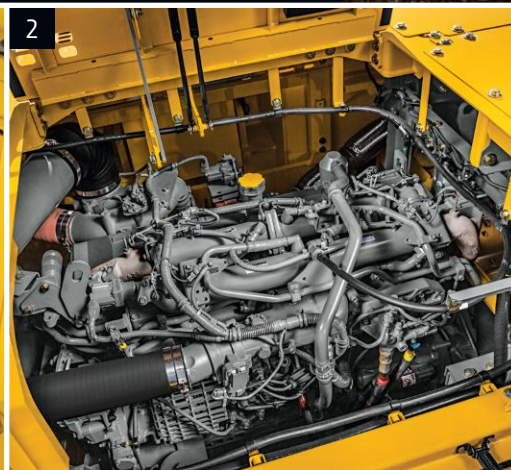


Hassle free.

Maintenance is no big deal on the 670G LC and 870G LC. Like all John Deere machines, they are easy to service and low cost to maintain. Standard Deere walks allow for easy cab-level machine access, with points of contact all around. The 870G LC includes a handy walk-through door so operators are within reach of all service areas.

Ultimate Uptime, featuring John Deere WorkSight™, is a customizable support solution available exclusively from your Deere dealer. This flexible offering maximizes equipment availability with standard John Deere WorkSight capabilities that can help prevent future downtime and speed repairs when needed. In addition to the base John Deere WorkSight features, our dealers work with you to build an uptime package that meets the specific needs of your machine, fleet, project, and business, including customized maintenance and repair agreements, onsite parts availability, extended warranties, fluid sampling, response-time guarantees, and more.

John Deere WorkSight is an exclusive suite of telematics solutions that increases uptime while lowering operating costs. At its heart, JDLink™ Ultimate machine monitoring provides real-time utilization data and alerts to help you maximize productivity and efficiency while minimizing downtime. Remote diagnostics enable your dealer to read codes, record performance data, and even update software without a trip to the jobsite.





1. Diesel exhaust fluid (DEF) can be conveniently filled when refueling due to its large and accessible tank.
2. FT4 engine solution does not require a DPF. Fluid consumption (fuel and diesel exhaust fluid [DEF]) is equal or reduced compared to IT4/Stage IIIB rates.
3. Large fuel tanks and 500- and 4,000-hour engine and hydraulic oil-service intervals decrease downtime for routine maintenance. Fluid-sample ports help speed preventative maintenance and troubleshooting.
4. Auto-idle automatically reduces engine speed when hydraulics aren't in use. Auto shutdown further preserves precious fuel.
5. Easy-to-read LCD monitor tracks scheduled maintenance intervals and issues reminders. Should a problem arise, it provides diagnostic information to help decrease downtime.
6. Upperstructure handrails provide multiple points of contact when accessing the engine compartment. Slip-resistant surfaces help improve stability.



4

5 Engine Oil Filter

Previous Maintenance	
2015/04/07	0.0 h
Remains	375.8 h



670G LC

Engine	670G LC		
Manufacturer and Model	Isuzu 6WG1-FT4		
Non-Road Emission Standard	EPA Final Tier 4/EU Stage IV		
Net Rated Power (ISO 9249)	345 kW (463 hp) at 1,800 rpm		
Cylinders	6		
Displacement	15.7 L (957 cu. in.)		
Off-Level Capacity	70% (35 deg.)		
Aspiration	Turbocharged, air-to-air charge-air cooler		
Cooling	2 cool-on-demand hydraulic-driven, suction-type fans with remote-mounted drive		
Powertrain	2-speed propel with AutoShift		
Maximum Travel Speed			
Low	3.6 km/h (2.2 mph)		
High	5.2 km/h (3.2 mph)		
Drawbar Pull	46 115 kg (101,666 lb.)		
Hydraulics	Open center, load sensing; in-cab mode selectors, illuminated: power modes (3), travel modes (2), and work modes (2)		
Main Pumps	2 variable-displacement pumps		
Maximum Rated Flow	489 L/m (129 gpm) x 2		
Pilot Pump	1 gear		
Maximum Rated Flow	30 L/m (7.9 gpm)		
Pressure Setting	3900 kPa (566 psi)		
System Operating Pressure			
Circuits			
Implement	31 900 kPa (4,627 psi)		
Travel	34 300 kPa (4,975 psi)		
Swing	29 400 kPa (4,264 psi)		
Power Boost	34 300 kPa (4,975 psi)		
Controls	Pilot levers, short stroke, low-effort hydraulic pilot controls with shutoff lever		
Cylinders	Heat-treated, chrome-plated, polished cylinder rods; hardened steel (replaceable bushings) pivot pins		
	<i>Bore</i>	<i>Rod Diameter</i>	<i>Stroke</i>
Boom (2)	191 mm (7.5 in.)	130 mm (5.1 in.)	1806 mm (71 in.)
Arm (1)	201 mm (7.9 in.)	140 mm (5.5 in.)	2164 mm (85 in.)
Bucket (1)	180 mm (7.1 in.)	130 mm (5.1 in.)	1555 mm (61 in.)
Electrical			
Number of Batteries (12 volt)	2		
Battery Capacity	500 CCA		
Alternator Rating	50 amp		
Work Lights	5 halogen (1 mounted on frame, 2 mounted on boom, and 2 mounted on top of cab)		
Undercarriage	Planetary final drives with axial-piston motors		
Rollers (each side)			
Carrier	3		
Track	8		
Shoes, Double-Bar Grousers (each side)	47		
Track			
Adjustment	Hydraulic		
Guides	Front and center		
Chain	Sealed and lubricated		
Ground Pressure			
Double-Bar Grouser Shoes			
650 mm (26 in.)	104.2 kPa (15.1 psi)		
750 mm (30 in.)	90.3 kPa (13.1 psi)		
900 mm (36 in.)	75.3 kPa (10.9 psi)		



Swing Mechanism	670G LC
Speed	9.1 rpm
Torque	206 000 Nm (151,938 lb.-ft.)

Serviceability

Refill Capacities	
Fuel Tank	900 L (238 gal.)
Cooling System	76 L (20.1 gal.)
Engine Oil with Filter	57 L (15.1 gal.)
Hydraulic Tank	380 L (100.4 gal.)
Hydraulic System	750 L (198.1 gal.)
Gearbox	
Swing (each)	10.5 L (11.1 qt.)
Travel (each)	16 L (16.9 qt.)
Pump Drive	6.2 L (6.6 qt.)
Diesel Exhaust Fluid (DEF) Tank	95 L (25.1 gal.)

Operating Weights

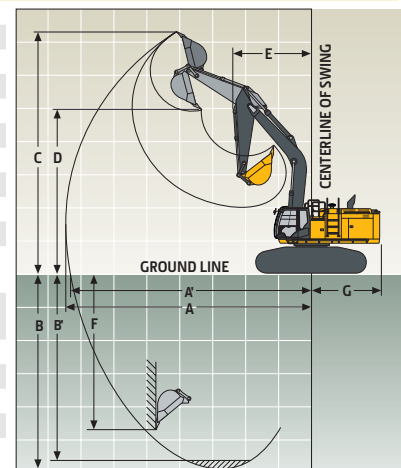
With Full Fuel Tank; 79-kg (175 lb.) Operator; 3.09-m³ (4.04 cu. yd.), 1370-mm (54 in.), 3126-kg (6,892 lb.) Bucket; 4.2-m (13 ft. 9 in.) Arm; 9800-kg (21,605 lb.) Counterweight; Counterweight Removal Device; and 900-mm (36 in.) Double-Bar Grouser Shoes
 SAE Operating Weight 69 900 kg (154,103 lb.)

Component Weights

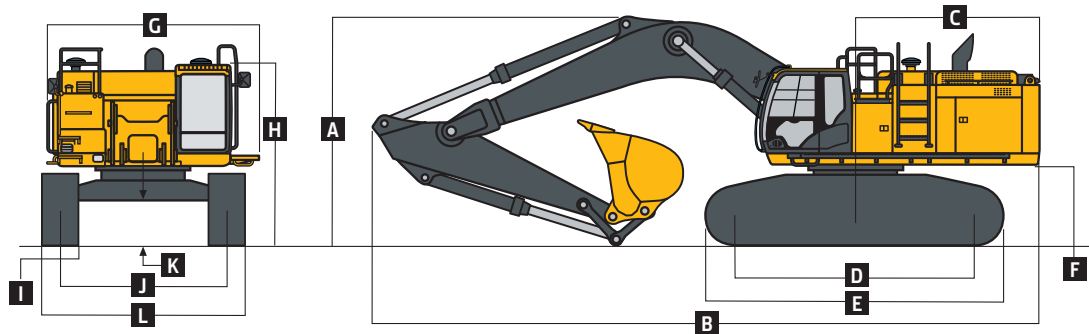
Undercarriage with Double-Bar Grouser Shoes	
650 mm (26 in.)	26 953 kg (59,421 lb.)
750 mm (30 in.)	27 333 kg (60,259 lb.)
900 mm (36 in.)	28 353 kg (62,508 lb.)
1-Piece Boom (with arm cylinder)	
7.8 m (25 ft. 7 in.)	6560 kg (14,462 lb.)
6.8-m (22 ft. 4 in.) Mass Excavating (ME)	6130 kg (13,514 lb.)
Arm with Bucket Cylinder and Linkage	
3.6 m (11 ft. 10 in.)	3640 kg (8,025 lb.)
4.2 m (13 ft. 9 in.)	3840 kg (8,466 lb.)
5.3 m (17 ft. 5 in.)	3620 kg (7,981 lb.)
2.9-m (9 ft. 6 in.) ME	3715 kg (8,190 lb.)
Boom-Lift Cylinders (2), Total Weight	1135 kg (2,502 lb.)
Counterweight with Standard Mainframe	10 400 kg (22,928 lb.)

Operating Dimensions

Boom Length	7.8 m (25 ft. 7 in.)	7.8 m (25 ft. 7 in.)	7.8 m (25 ft. 7 in.)	6.8-m (22 ft. 4 in.) ME
Arm Length	3.6 m (11 ft. 10 in.)	4.2 m (13 ft. 9 in.)	5.3 m (17 ft. 5 in.)	2.9 m (9 ft. 6 in.) ME
Arm Digging Force				
SAE	247 kN (55,528 lb.)	224 kN (50,357 lb.)	192 kN (43,163 lb.)	297 kN (66,768 lb.)
ISO	255 kN (57,326 lb.)	231 kN (51,931 lb.)	196 kN (44,063 lb.)	306 kN (68,792 lb.)
Bucket Digging Force				
SAE	290 kN (65,195 lb.)	290 kN (65,195 lb.)	245 kN (55,078 lb.)	332 kN (74,637 lb.)
ISO	324 kN (72,838 lb.)	324 kN (72,838 lb.)	277 kN (62,272 lb.)	369 kN (82,954 lb.)
A Maximum Reach	13.25 m (43 ft. 6 in.)	13.85 m (45 ft. 5 in.)	14.74 m (48 ft. 4 in.)	11.80 m (38 ft. 9 in.)
A' Maximum Reach at Ground Level	13.00 m (42 ft. 8 in.)	13.61 m (44 ft. 8 in.)	14.51 m (47 ft. 7 in.)	11.50 m (37 ft. 9 in.)
B Maximum Digging Depth	8.53 m (28 ft. 0 in.)	9.15 m (30 ft. 0 in.)	10.03 m (32 ft. 11 in.)	7.12 m (23 ft. 4 in.)
B' Maximum Digging Depth at 2.44-m (8 ft. 0 in.) Flat Bottom	8.40 m (27 ft. 7 in.)	9.03 m (29 ft. 8 in.)	9.92 m (32 ft. 7 in.)	6.97 m (22 ft. 10 in.)
C Maximum Cutting Height	11.92 m (39 ft. 1 in.)	12.24 m (40 ft. 2 in.)	12.65 m (41 ft. 6 in.)	11.92 m (39 ft. 1 in.)
D Maximum Dumping Height	8.05 m (26 ft. 5 in.)	8.33 m (27 ft. 4 in.)	9.17 m (30 ft. 1 in.)	7.33 m (24 ft. 1 in.)
E Minimum Swing Radius	5.78 m (19 ft. 0 in.)	5.76 m (18 ft. 11 in.)	5.70 m (18 ft. 8 in.)	5.24 m (17 ft. 2 in.)
F Maximum Vertical Wall	7.38 m (24 ft. 3 in.)	8.18 m (26 ft. 10 in.)	9.17 m (30 ft. 1 in.)	5.28 m (17 ft. 4 in.)
G Tail-Swing Radius	4.02 m (13 ft. 2 in.)	4.02 m (13 ft. 2 in.)	4.02 m (13 ft. 2 in.)	4.02 m (13 ft. 2 in.)



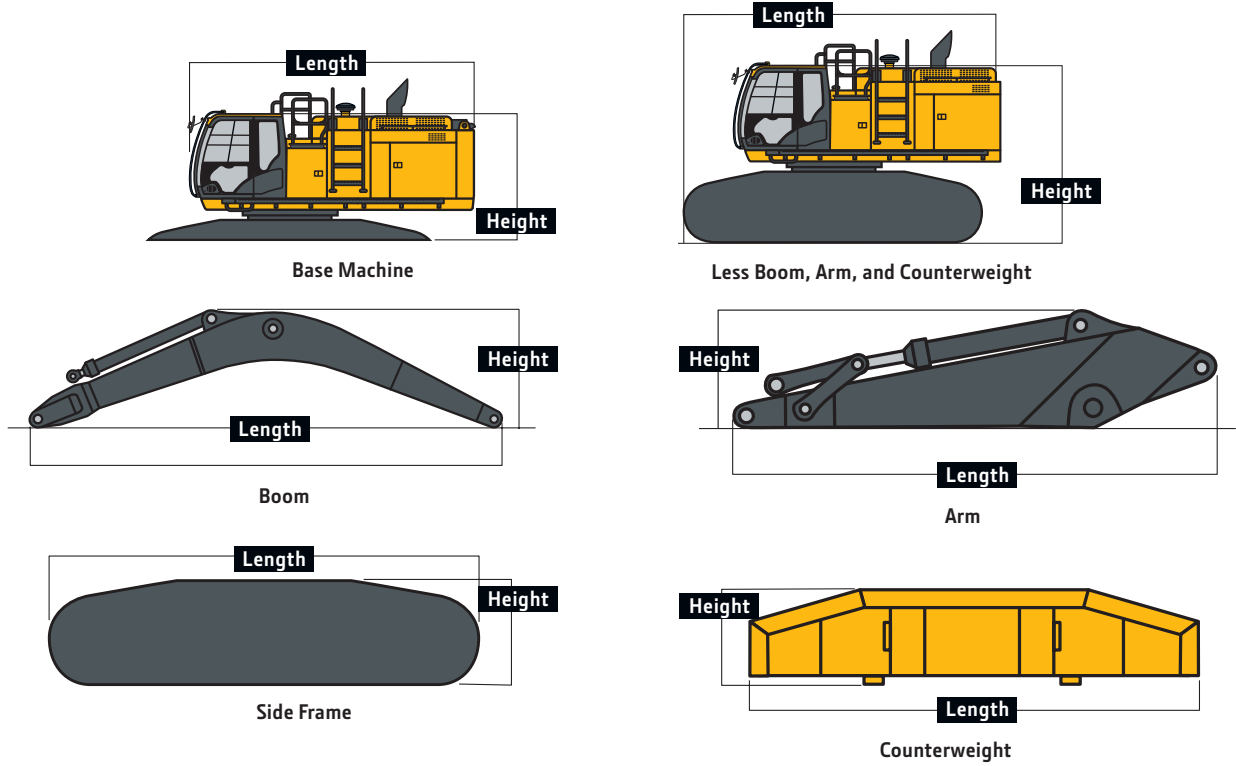
Machine Dimensions		670G LC			
Arm Length		3.6 m (11 ft. 10 in.)	4.2 m (13 ft. 9 in.)	5.3 m (17 ft. 5 in.)	2.9 m (9 ft. 6 in.) ME with 6.8-m (22 ft. 4 in.) ME Boom
A Overall Height with Arm		4.46 m (14 ft. 8 in.)	4.98 m (16 ft. 4 in.)	5.28 m (17 ft. 4 in.)	4.96 m (16 ft. 3 in.)
B Overall Length with Arm		13.40 m (44 ft. 0 in.)	13.40 m (44 ft. 0 in.)	13.25 m (43 ft. 6 in.)	12.42 m (40 ft. 9 in.)
C Rear-End Length/Swing Radius		3.91 m (12 ft. 10 in.)			
D Distance Between Idler/Sprocket Centerline		4.59 m (15 ft. 1 in.)			
E Undercarriage Length		5.84 m (19 ft. 2 in.)			
F Counterweight Clearance		1.53 m (5 ft. 0 in.)			
G Upperstructure Width		4.09 m (13 ft. 5 in.)			
H Cab Height		3.55 m (11 ft. 8 in.)			
I Track Width with Double-Bar Grouser Shoes		650 mm (26 in.) / 750 mm (30 in.) / 900 mm (36 in.)			
J Track Gauge with 900-mm (36 in.) Double-Bar Grouser Shoes					
Operating Position		3.30 m (10 ft. 10 in.)			
Transport Position		2.82 m (9 ft. 3 in.)			
K Ground Clearance		0.86 m (34 in.)			
L Width over Track with 900-mm (36 in.) Double-Bar Grouser Shoes					
Operating Position		4.20 m (13 ft. 9 in.)			
Transport Position		3.73 m (12 ft. 3 in.)			



Packing Dimensions and Weights for Transportation

	Length	Height	Overall Width	Weight
Base Machine (without front attachment and side frame)*	5.68 m (18 ft. 8 in.)	2.77 m (9 ft. 1 in.)	3.42 m (11 ft. 3 in.)	21 400 kg (47,179 lb.)
Side Frame (each)				
With 650-mm (26 in.) Shoes	5.85 m (19 ft. 2 in.)	1.45 m (4 ft. 9 in.)	1.25 m (4 ft. 1 in.)	10 400 kg (22,928 lb.)
With 750-mm (30 in.) Shoes	5.85 m (19 ft. 2 in.)	1.45 m (4 ft. 9 in.)	1.25 m (4 ft. 1 in.)	10 600 kg (23,369 lb.)
With 900-mm (36 in.) Shoes	5.85 m (19 ft. 2 in.)	1.45 m (4 ft. 9 in.)	1.32 m (4 ft. 4 in.)	11 100 kg (24,471 lb.)
Counterweight, Standard	3.36 m (11 ft. 0 in.)	1.55 m (5 ft. 1 in.)	0.59 m (23 in.)	11 100 kg (24,471 lb.)
Boom				
6.8 m (22 ft. 4 in.)	7.14 m (23 ft. 5 in.)	2.51 m (8 ft. 3 in.)	1.39 m (4 ft. 7 in.)	6110 kg (13,470 lb.)
7.8 m (25 ft. 7 in.)	8.13 m (26 ft. 8 in.)	2.33 m (7 ft. 8 in.)	1.39 m (4 ft. 7 in.)	6560 kg (14,462 lb.)
Arm				
2.9 m (9 ft. 6 in.)	4.37 m (14 ft. 4 in.)	1.69 m (5 ft. 7 in.)	0.80 m (32 in.)	3715 kg (8,190 lb.)
3.6 m (11 ft. 10 in.)	5.11 m (16 ft. 9 in.)	1.44 m (4 ft. 9 in.)	0.80 m (32 in.)	3640 kg (8,025 lb.)
4.2 m (13 ft. 9 in.)	5.71 m (18 ft. 9 in.)	1.39 m (4 ft. 7 in.)	0.80 m (32 in.)	3840 kg (8,466 lb.)
5.3 m (17 ft. 5 in.)	6.73 m (22 ft. 1 in.)	1.26 m (4 ft. 2 in.)	0.80 m (32 in.)	3620 kg (7,981 lb.)
Base Machine (without front attachment)*				
With 650-mm (26 in.) Shoes	6.70 m (22 ft. 0 in.)	3.68 m (12 ft. 1 in.) / 3.76 m (12 ft. 4 in.) w/o exhaust stack	3.48 m (11 ft. 5 in.)	44 000 kg (97,003 lb.)
With 750-mm (30 in.) Shoes	6.70 m (22 ft. 0 in.)	3.68 m (12 ft. 1 in.) / 3.76 m (12 ft. 4 in.) w/o exhaust stack	3.58 m (11 ft. 9 in.)	44 400 kg (97,885 lb.)
With 900-mm (36 in.) Shoes	6.70 m (22 ft. 0 in.)	3.68 m (12 ft. 1 in.) / 3.76 m (12 ft. 4 in.) w/o exhaust stack	3.73 m (12 ft. 3 in.)	45 400 kg (100,090 lb.)

*Steps on the track frame, exhaust stack, and side hydraulic oil tank; handrails on the upper battery box; upper fuel tank; and side hydraulic oil tank must be removed.



Lift Capacities

Boldface type indicates hydraulically limited capacity; lightface type indicates stability-limited capacities, in kg (lb.). Ratings at bucket lift hook; machine equipped with standard gauge and situated on firm, uniform supporting surface. Total load includes weight of cables, hook, etc. Figures do not exceed 87 percent of hydraulic capacities or 75 percent of weight needed to tip machine. All lift capacities are based on ISO 10567 (with power boost).

HORIZONTAL DISTANCE FROM CENTERLINE OF ROTATION

LOAD POINT HEIGHT	3.0 m (10 ft.)		4.5 m (15 ft.)		6.0 m (20 ft.)		7.5 m (25 ft.)		9.0 m (30 ft.)		10.5 m (35 ft.)	
	Over Front	Over Side	Over Front	Over Side	Over Front	Over Side	Over Front	Over Side	Over Front	Over Side	Over Front	Over Side
7.5 m (25 ft.)									10 880 (23,790)	10 880 (23,790)	6780	6780
6.0 m (20 ft.)									11 700 (25,460)	11 700 (25,460)	10 070 (20,250)	8980 (19,170)
4.5 m (15 ft.)					18 420 (39,600)	18 420 (39,600)	14 850 (32,080)	14 850 (32,080)	12 770 (27,710)	11 620 (24,970)	11 490 (25,020)	8760 (18,730)
3.0 m (10 ft.)					21 780 (46,870)	21 380 (46,090)	16 790 (36,260)	15 010 (32,310)	13 940 (30,190)	11 100 (23,860)	12 150 (26,400)	8450 (18,120)
1.5 m (5 ft.)					24 280 (52,390)	20 160 (43,420)	18 420 (39,820)	14 250 (30,680)	14 970 (32,420)	10 630 (22,850)	12 040 (25,850)	8170 (17,520)
Ground Line			14 150 (32,800)	14 150 (32,800)	25 550 (55,260)	19 440 (41,810)	19 470 (42,130)	13 720 (29,510)	15 170 (32,610)	10 270 (22,070)	11 800 (25,360)	7950 (17,050)
-1.5 m (-5 ft.)	10 800 (24,430)	10 800 (24,430)	19 890 (45,600)	19 890 (45,600)	25 670 (55,570)	19 120 (41,090)	19 800 (42,840)	13 420 (28,850)	14 940 (32,110)	10 050 (21,610)	11 680 (25,120)	7830 (16,820)
-3.0 m (-10 ft.)	17 780 (40,170)	17 780 (40,170)	27 900 (63,880)	27 900 (63,880)	24 710 (53,470)	19 090 (41,010)	19 270 (41,640)	13 340 (28,680)	14 880 (32,010)	10 000 (21,520)		
-4.5 m (-15 ft.)	26 090 (59,140)	26 090 (59,140)	29 340 (63,390)	29 340 (63,390)	22 540 (48,600)	19 310 (41,510)	17 630 (37,850)	13 480 (29,010)	13 570 (28,680)	10 180 (21,960)		
-6.0 m (-20 ft.)			23 970 (51,240)	23 970 (51,240)	18 550 (39,460)	18 550 (39,460)	13 910 (28,970)	13 910 (28,970)				

Lift Capacities (continued) 670G LC

Boldface type indicates hydraulically limited capacity; lightface type indicates stability-limited capacities, in kg (lb.). Ratings at bucket lift hook; machine equipped with standard gauge and situated on firm, uniform supporting surface. Total load includes weight of cables, hook, etc. Figures do not exceed 87 percent of hydraulic capacities or 75 percent of weight needed to tip machine. All lift capacities are based on ISO 10567 (with power boost).

LOAD POINT HEIGHT	HORIZONTAL DISTANCE FROM CENTERLINE OF ROTATION											
	3.0 m (10 ft.)		4.5 m (15 ft.)		6.0 m (20 ft.)		7.5 m (25 ft.)		9.0 m (30 ft.)		10.5 m (35 ft.)	
	Over Front	Over Side	Over Front	Over Side	Over Front	Over Side	Over Front	Over Side	Over Front	Over Side	Over Front	Over Side
<i>With 6.8-m (22 ft. 4 in.) ME boom, 2.9-m (9 ft. 6 in.) ME arm, 3.5-m³ (4.6 cu. yd.) bucket, and 650-mm (26 in.) double-bar grouser shoes</i>												
7.5 m (25 ft.)							14 400	14 400				
							(31,610)	(31,610)				
6.0 m (20 ft.)					17 530	17 530	15 280	15 280				
					(37,890)	(37,890)	(33,220)	(33,220)				
4.5 m (15 ft.)					20 470	20 470	16 700	15 250	14 650	10 920		
					(44,110)	(44,110)	(36,200)	(32,780)	(31,940)	(23,330)		
3.0 m (10 ft.)					23 430	21 030	18 260	14 580	15 370	10 630		
					(50,520)	(45,280)	(39,520)	(31,340)	(33,390)	(22,790)		
1.5 m (5 ft.)					25 430	20 100	19 480	14 020	15 260	10 330		
					(54,940)	(43,230)	(42,140)	(30,130)	(32,750)	(22,160)		
Ground Line					26 020	19 610	19 950	13 670	15 070	10 150		
					(56,320)	(42,140)	(43,140)	(29,370)	(32,390)	(21,820)		
-1.5 m (-5 ft.)			33 520	32 190	25 150	19 490	19 300	13 560				
			(72,780)	(68,930)	(54,430)	(41,870)	(41,640)	(29,160)				
-3.0 m (-10 ft.)	34 290	34 290	29 560	29 560	22 510	19 710	16 670	13 790				
	(77,980)	(77,980)	(63,980)	(63,980)	(48,500)	(42,350)	(35,280)	(29,730)				
-4.5 m (-15 ft.)			22 630	22 630	16 490	16 490						
			(48,280)	(48,280)	(34,300)	(34,300)						
<i>With 7.8-m (25 ft. 7 in.) boom, 4.2-m (13 ft. 9 in.) arm, 2.5-m³ (3.3 cu. yd.) bucket, and 750-mm (30 in.) double-bar grouser shoes</i>												
7.5 m (25 ft.)									10 880	10 880	6780	6780
									(23,790)	(23,790)		
6.0 m (20 ft.)									11 700	11 700	10 070	9040
									(25,460)	(25,460)	(20,250)	(19,290)
4.5 m (15 ft.)					18 420	18 420	14 850	14 850	12 770	11 690	11 490	8810
			(54,750)	(54,750)	(39,600)	(39,600)	(32,080)	(32,080)	(27,710)	(25,120)	(25,020)	(18,860)
3.0 m (10 ft.)					21 780	21 500	16 790	15 090	13 940	11 170	12 150	8510
					(46,870)	(46,340)	(36,260)	(32,500)	(30,190)	(24,010)	(26,400)	(18,240)
1.5 m (5 ft.)					24 280	20 280	18 420	14 340	14 970	10 700	12 120	8230
					(52,390)	(43,670)	(39,820)	(30,870)	(32,420)	(23,000)	(26,020)	(17,640)
Ground Line			14 150	14 150	25 550	19 560	19 470	13 810	15 270	10 340	11 880	8000
			(32,800)	(32,800)	(55,260)	(42,070)	(42,130)	(29,700)	(32,810)	(22,220)	(25,520)	(17,170)
-1.5 m (-5 ft.)	10 800	10 800	19 890	19 890	25 670	19 240	19 800	13 510	15 030	10 120	11 760	7890
	(24,430)	(24,430)	(45,600)	(45,600)	(55,570)	(41,340)	(42,840)	(29,040)	(32,310)	(21,760)	(25,280)	(16,950)
-3.0 m (-10 ft.)	17 780	17 780	27 900	27 900	24 710	19 210	19 270	13 420	14 980	10 070		
	(40,170)	(40,170)	(63,880)	(63,880)	(53,470)	(41,270)	(41,640)	(28,870)	(32,210)	(21,670)		
-4.5 m (-15 ft.)	26 090	26 090	29 340	29 340	22 540	19 430	17 630	13 570	13 570	10 250		
	(59,140)	(59,140)	(63,390)	(63,390)	(48,600)	(41,770)	(37,850)	(29,200)	(28,680)	(22,110)		
-6.0 m (-20 ft.)			23 970	23 970	18 550	18 550	13 910	13 910				
			(51,240)	(51,240)	(39,460)	(39,460)	(28,970)	(28,970)				
<i>With 7.8-m (25 ft. 7 in.) boom, 3.6-m (11 ft. 10 in.) arm, 2.9-m³ (3.8 cu. yd.) bucket, and 900-mm (36 in.) double-bar grouser shoes</i>												
7.5 m (25 ft.)									11 740	11 740		
									(25,700)	(25,700)		
6.0 m (20 ft.)							13 980	13 980	12 460	12 100	8120	8120
							(30,280)	(30,280)	(27,120)	(25,960)		
4.5 m (15 ft.)					19 900	19 900	15 770	15 770	13 440	11 650	12 040	8770
					(42,760)	(42,760)	(34,070)	(34,070)	(29,160)	(25,020)	(23,250)	(18,740)
3.0 m (10 ft.)					23 020	21 290	17 560	15 030	14 490	11 170	12 480	8530
					(49,550)	(45,900)	(37,930)	(32,380)	(31,390)	(24,010)	(26,790)	(18,270)
1.5 m (5 ft.)					25 060	20 270	18 970	14 370	15 370	10 750	12 230	8290
					(54,100)	(43,630)	(41,010)	(30,930)	(33,280)	(23,110)	(26,260)	(17,770)
Ground Line			12 940	12 940	25 790	19 740	19 740	13 930	15 440	10 450	12 050	8120
			(30,250)	(30,250)	(55,810)	(42,440)	(42,700)	(29,960)	(33,200)	(22,470)	(25,900)	(17,440)
-1.5 m (-5 ft.)			21 020	21 020	25 390	19 560	19 730	13 720	15 280	10 300		
			(48,230)	(48,230)	(55,010)	(42,040)	(42,680)	(29,510)	(32,860)	(22,150)		
-3.0 m (-10 ft.)	20 320	20 320	31 010	31 010	23 940	19 650	18 790	13 730	14 830	10 340		
	(45,940)	(45,940)	(67,290)	(67,290)	(51,810)	(42,220)	(40,560)	(29,530)	(31,800)	(22,260)		
-4.5 m (-15 ft.)	30 660	30 660	27 020	27 020	21 160	19 980	16 490	13 980				
	(69,670)	(69,670)	(58,350)	(58,350)	(45,550)	(42,960)	(35,230)	(30,120)				
-6.0 m (-20 ft.)			20 650	20 650	16 030	16 030						
			(43,850)	(43,850)	(33,650)	(33,650)						

Lift Capacities (continued) 670G LC

Boldface type indicates hydraulically limited capacity; lightface type indicates stability-limited capacities, in kg (lb.). Ratings at bucket lift hook; machine equipped with standard gauge and situated on firm, uniform supporting surface. Total load includes weight of cables, hook, etc. Figures do not exceed 87 percent of hydraulic capacities or 75 percent of weight needed to tip machine. All lift capacities are based on ISO 10567 (with power boost).

HORIZONTAL DISTANCE FROM CENTERLINE OF ROTATION

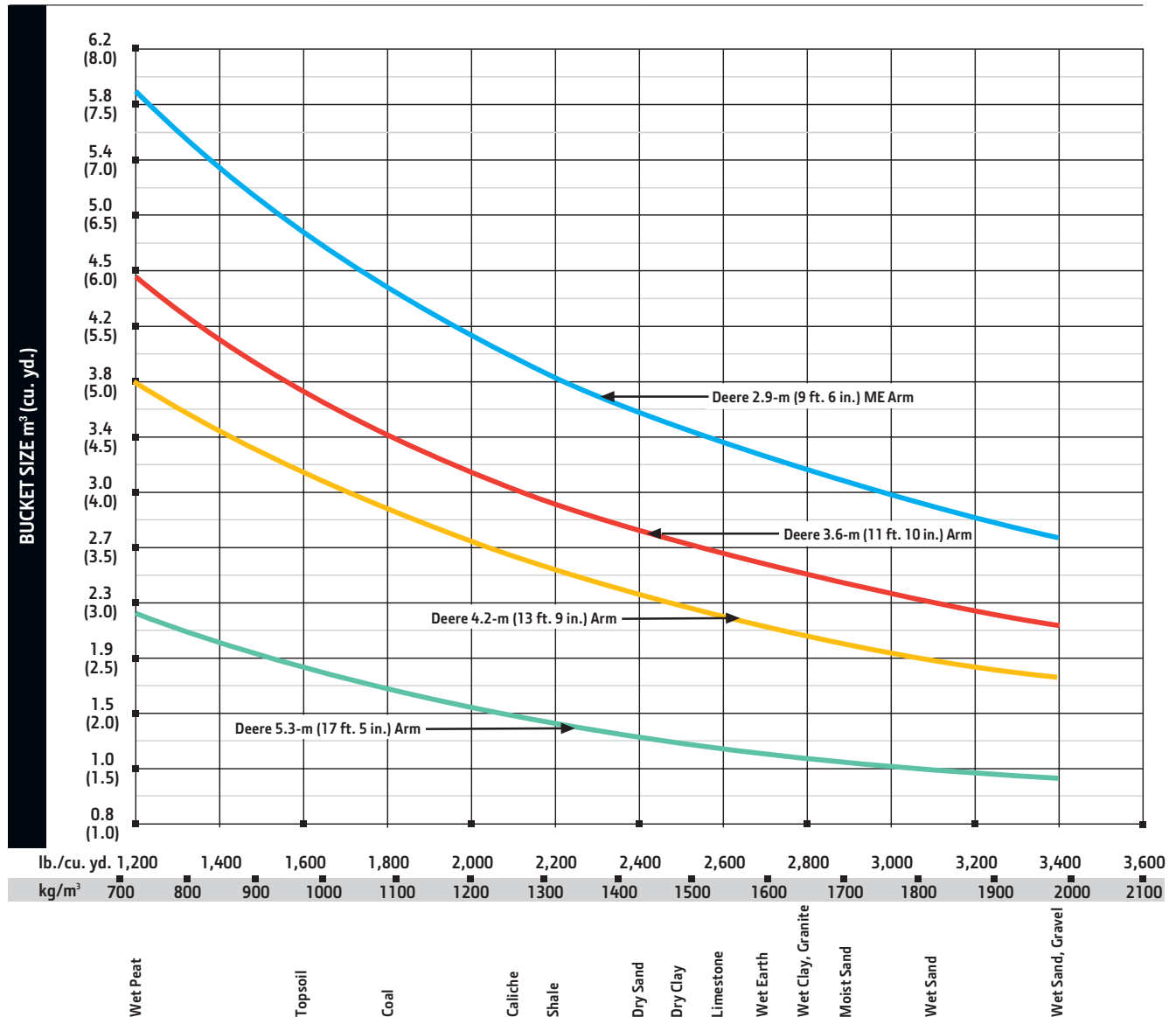
LOAD POINT HEIGHT	3.0 m (10 ft.)		4.5 m (15 ft.)		6.0 m (20 ft.)		7.5 m (25 ft.)		9.0 m (30 ft.)		10.5 m (35 ft.)	
	Over Front	Over Side	Over Front	Over Side	Over Front	Over Side	Over Front	Over Side	Over Front	Over Side	Over Front	Over Side
<i>With 7.8-m (25 ft. 7 in.) boom, 4.2-m (13 ft. 9 in.) arm, 2.5-m³ (3.3 cu. yd.) bucket, and 900-mm (36 in.) double-bar grouser shoes</i>												
7.5 m (25 ft.)									10 880	10 880	6780	6780
									(23,790)	(23,790)		
6.0 m (20 ft.)									11 700	11 700	10 070	9190
									(25,460)	(25,460)	(20,250)	(19,630)
4.5 m (15 ft.)					18 420	18 420	14 850	14 850	12 770	11 880	11 490	8970
			(54,750)	(54,750)	(39,600)	(39,600)	(32,080)	(32,080)	(27,710)	(25,530)	(25,020)	(19,200)
3.0 m (10 ft.)					21 780	21 780	16 790	15 330	13 940	11 360	12 150	8670
					(46,870)	(46,870)	(36,260)	(33,010)	(30,190)	(24,420)	(26,400)	(18,580)
1.5 m (5 ft.)					24 280	20 600	18 420	14 580	14 970	10 890	12 330	8380
					(52,390)	(44,360)	(39,820)	(31,380)	(32,420)	(23,410)	(26,480)	(17,980)
Ground Line			14 150	14 150	25 550	19 880	19 470	14 040	15 530	10 530	12 090	8160
			(32,800)	(32,800)	(55,260)	(42,760)	(42,130)	(30,210)	(33,370)	(22,630)	(25,980)	(17,510)
-1.5 m (-5 ft.)	10 800	10 800	19 890	19 890	25 670	19 560	19 800	13 740	15 290	10 310	11 970	8040
	(24,430)	(24,430)	(45,600)	(45,600)	(55,570)	(42,030)	(42,840)	(29,550)	(32,870)	(22,160)	(25,740)	(17,290)
-3.0 m (-10 ft.)	17 780	17 780	27 900	27 900	24 710	19 530	19 270	13 660	15 240	10 260		
	(40,170)	(40,170)	(63,880)	(63,880)	(53,470)	(41,960)	(41,640)	(29,380)	(32,780)	(22,070)		
-4.5 m (-15 ft.)	26 090	26 090	29 340	29 340	22 540	19 750	17 630	13 800	13 570	10 430		
	(59,140)	(59,140)	(63,390)	(63,390)	(48,600)	(42,460)	(37,850)	(29,720)	(28,680)	(22,520)		
-6.0 m (-20 ft.)			23 970	23 970	18 550	18 550	13 910	13 910				
			(51,240)	(51,240)	(39,460)	(39,460)	(28,970)	(28,970)				
<i>With 7.8-m (25 ft. 7 in.) boom, 5.3-m (17 ft. 5 in.) arm, 2.0-m³ (2.6 cu. yd.) bucket, and 900-mm (36 in.) double-bar grouser shoes</i>												
9.0 m (30 ft.)											6010	6010
											(11,570)	(11,570)
7.5 m (25 ft.)											7630	7630
											(16,040)	(16,040)
6.0 m (20 ft.)									9950	9950	8900	8900
									(21,590)	(21,590)	(18,980)	(18,980)
4.5 m (15 ft.)							13 440	13 440	11 860	11 860	10 430	9650
							(29,090)	(29,090)	(25,770)	(25,770)	(22,250)	(20,710)
3.0 m (10 ft.)			27 860	27 860	19 700	19 700	15 610	15 610	13 210	12 110	11 670	9300
			(59,720)	(59,720)	(42,440)	(42,440)	(33,760)	(33,760)	(28,650)	(26,050)	(25,370)	(19,950)
1.5 m (5 ft.)			17 980	17 980	22 900	21 780	17 610	15 430	14 490	11 560	12 480	8940
			(42,690)	(42,690)	(49,430)	(46,910)	(38,090)	(33,210)	(31,410)	(24,860)	(27,090)	(19,200)
Ground Line			16 170	16 170	25 050	20 730	19 130	14 730	15 520	11 100	12 590	8640
			(37,320)	(37,320)	(54,170)	(44,600)	(41,410)	(31,690)	(33,630)	(23,860)	(27,050)	(18,560)
-1.5 m (-5 ft.)	10 050	10 050	18 750	18 750	26 040	20 120	20 000	14 260	15 760	10 770	12 360	8430
	(22,700)	(22,700)	(42,960)	(42,960)	(56,370)	(43,260)	(43,310)	(30,670)	(33,880)	(23,150)	(26,570)	(18,100)
-3.0 m (-10 ft.)	14 710	14 710	23 610	23 610	25 940	19 860	20 120	14 020	15 570	10 590	12 250	8330
	(33,200)	(33,200)	(53,970)	(53,970)	(56,150)	(42,690)	(43,520)	(30,160)	(33,480)	(22,770)	(26,370)	(17,910)
-4.5 m (-15 ft.)	20 340	20 340	30 830	30 830	24 730	19 880	19 330	13 990	15 440	10 580	10 170	8400
	(46,010)	(46,010)	(70,610)	(69,460)	(53,430)	(42,750)	(41,700)	(30,120)	(33,190)	(22,790)		
-6.0 m (-20 ft.)	27 670	27 670	29 090	29 090	22 150	20 170	17 280	14 200	13 250	10 810		
	(62,900)	(62,900)	(62,560)	(62,560)	(47,560)	(43,410)	(36,920)	(30,600)	(27,800)	(23,360)		
-7.5 m (-25 ft.)			22 770	22 770	17 360	17 360	12 680	12 680				
			(48,120)	(48,120)	(36,410)	(36,410)						
<i>With 6.8-m (22 ft. 4 in.) ME boom, 2.9-m (9 ft. 6 in.) ME arm, 3.5-m³ (4.6 cu. yd.) bucket, and 900-mm (36 in.) double-bar grouser shoes</i>												
7.5 m (25 ft.)							14 400	14 400				
							(31,610)	(31,610)				
6.0 m (20 ft.)					17 530	17 530	15 280	15 280				
					(37,890)	(37,890)	(33,220)	(33,220)				
4.5 m (15 ft.)					20 470	20 470	16 700	15 580	14 650	11 180		
					(44,110)	(44,110)	(36,200)	(33,480)	(31,940)	(23,890)		
3.0 m (10 ft.)					23 430	21 470	18 260	14 900	15 370	10 880		
					(50,520)	(46,230)	(39,520)	(32,040)	(33,390)	(23,340)		
1.5 m (5 ft.)					25 430	20 540	19 480	14 340	15 610	10 590		
					(54,940)	(44,180)	(42,140)	(30,830)	(33,520)	(22,720)		
Ground Line					26 020	20 050	19 950	13 990	15 420	10 410		
					(56,320)	(43,090)	(43,140)	(30,070)	(33,150)	(22,380)		
-1.5 m (-5 ft.)			33 520	32 870	25 150	19 930	19 300	13 890				
			(72,780)	(70,400)	(54,430)	(42,820)	(41,640)	(29,860)				
-3.0 m (-10 ft.)	34 290	34 290	29 560	29 560	22 510	20 150	16 670	14 120				
	(77,980)	(77,980)	(63,980)	(63,980)	(48,500)	(43,300)	(35,280)	(30,440)				
-4.5 m (-15 ft.)			22 630	22 630	16 490	16 490						
			(48,280)	(48,280)	(34,300)	(34,300)						

Buckets 670G LC

A full line of buckets is offered to meet a wide variety of applications. Digging forces are with power boost. Tooth selection includes the John Deere Fanggs™ or ESCO teeth standard. Replaceable cutting edges and a variety of teeth are available through John Deere Parts. Optional side cutters add 150 mm (6 in.) to bucket widths. Capacities are SAE heaped ratings.

Bucket Type	Bucket Width		Bucket Capacity		Bucket Weight		Bucket Dig Force				Arm Dig Force 3.6 m (11 ft. 10 in.)			
							SAE		ISO		SAE		ISO	
							mm	in.	m ³	cu. yd.	kg	lb.	kN	lb.
Extreme Duty Plate Lip	1219	48	2.65	3.5	3396	7,487	275	61,851	307	69,102	242	54,423	250	56,186
	1372	54	3.06	4.0	3546	7,817	275	61,851	307	69,102	242	54,423	250	56,186
	1524	60	3.53	4.6	3795	8,368	275	61,851	307	69,102	242	54,423	250	56,186
Heavy Duty High Capacity	914	36	1.80	2.4	2664	5,873	275	61,851	307	69,102	242	54,423	250	56,186
	1067	42	2.22	2.9	2867	6,320	275	61,851	307	69,102	242	54,423	250	56,186
	1219	48	2.06	2.7	2966	6,540	275	61,851	307	69,102	242	54,423	250	56,186
	1372	54	3.09	4.0	3129	6,898	275	61,851	307	69,102	242	54,423	250	56,186
	1524	60	3.54	4.6	3302	7,280	275	61,851	307	69,102	242	54,423	250	56,186
	1829	72	4.44	5.8	3593	7,921	275	61,851	307	69,102	242	54,423	250	56,186
Heavy Capacity Dirt	2032	80	5.05	6.6	3916	8,634	275	61,851	307	69,102	242	54,423	250	56,186
	2184	86	4.59	6.0	3941	8,688	287	64,421	320	71,973	246	55,278	254	57,069
	914	36	1.30	1.7	2252	4,964	326	73,327	364	81,924	258	57,940	266	59,817
	1067	42	1.58	2.1	2594	5,719	326	73,327	364	81,924	258	57,940	266	59,817
	1219	48	1.90	2.5	2722	6,000	326	73,327	364	81,924	258	57,940	266	59,817
	1372	54	2.19	2.9	2858	6,302	326	73,327	364	81,924	258	57,940	266	59,817
Heavy Duty	1524	60	2.52	3.3	3062	6,750	326	73,327	364	81,924	258	57,940	266	59,817
	1930	76	3.75	4.9	3043	6,709	287	64,421	320	71,973	246	55,278	254	57,069
	2083	82	4.05	5.3	3292	7,257	287	64,421	320	71,973	246	55,278	254	57,069

Bucket Selection Guide*



*Contact your John Deere dealer for optimum bucket and attachment selections. These recommendations are for general conditions and average use. Does not include optional equipment such as thumbs or couplers. Larger buckets may be possible when using light materials, for flat and level operations, less compacted materials, and volume loading applications such as mass excavation applications in ideal conditions. Smaller buckets are recommended for adverse conditions such as off-level applications, rocks, and uneven surfaces. Bucket capacity indicated is SAE heaped.

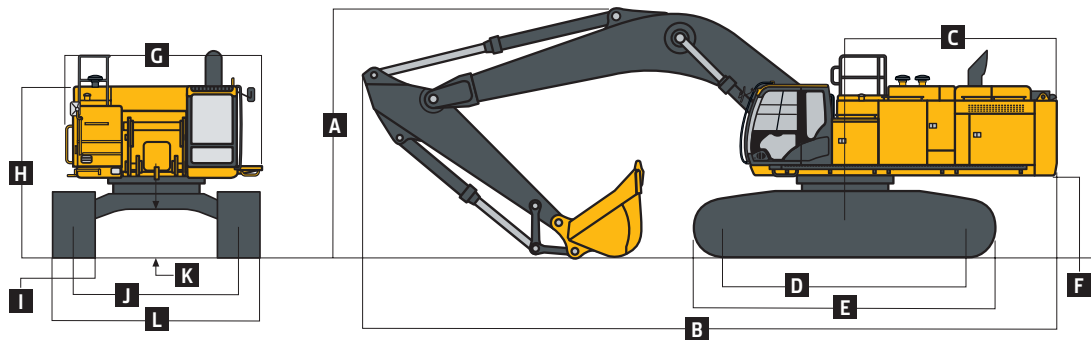
Arm Dig Force 4.2 m (13 ft. 9 in.)				Arm Dig Force 5.3 m (17 ft. 5 in.)				Arm Dig Force 2.9 m (9 ft. 6 in.) ME				Bucket Tip Radius		Number of Teeth
(SAE)		(ISO)		(SAE)		(ISO)		(SAE)		(ISO)		mm	in.	
kN	lb.	kN	lb.	kN	lb.	kN	lb.	kN	lb.	kN	lb.			
220	49,448	227	50,993	189	42,497	193	43,383	290	65,260	299	67,238	2281	89.79	3
220	49,448	227	50,993	189	42,497	193	43,383	290	65,260	299	67,238	2281	89.79	3
220	49,448	227	50,993	189	42,497	193	43,383	290	65,260	299	67,238	2281	89.79	3
220	49,448	227	50,993	189	42,497	193	43,383	290	65,260	299	67,238	2281	89.79	3
220	49,448	227	50,993	189	42,497	193	43,383	290	65,260	299	67,238	2281	89.79	3
220	49,448	227	50,993	189	42,497	193	43,383	290	65,260	299	67,238	2281	89.79	4
220	49,448	227	50,993	189	42,497	193	43,383	290	65,260	299	67,238	2281	89.79	5
220	49,448	227	50,993	189	42,497	193	43,383	290	65,260	299	67,238	2281	89.79	5
220	49,448	227	50,993	189	42,497	193	43,383	290	65,260	299	67,238	2281	89.79	6
220	49,448	227	50,993	189	42,497	193	43,383	290	65,260	299	67,238	2281	89.79	6
223	50,152	230	51,720	58	13,013	195	43,910	295	66,427	304	68,440	2190	86.23	6
233	52,331	240	53,996	198	44,597	203	45,526	312	70,090	321	72,214	1924	75.75	3
233	52,331	240	53,996	198	44,597	203	45,526	312	70,090	321	72,214	1924	75.75	4
233	52,331	240	53,996	198	44,597	203	45,526	312	70,090	321	72,214	1924	75.75	4
233	52,331	240	53,996	198	44,597	203	45,526	312	70,090	321	72,214	1924	75.75	5
233	52,331	240	53,996	198	44,597	203	45,526	312	70,090	321	72,214	1924	75.75	5
223	50,152	230	51,720	58	13,013	195	43,910	295	66,427	304	68,440	2189	86.20	6
223	50,152	230	51,720	58	13,013	195	43,910	295	66,427	304	68,440	2189	86.20	7

870G LC



Engine	870G LC		
Manufacturer and Model	Isuzu 6WG1-FT4		
Non-Road Emission Standard	EPA Final Tier 4/EU Stage IV		
Net Rated Power (ISO 9249)	382 kW (512 hp) at 1,800 rpm		
Cylinders	6		
Displacement	15.7 L (957 cu. in.)		
Off-Level Capacity	70% (35 deg.)		
Aspiration	Turbocharged, air-to-air charge-air cooler		
Cooling	Cool-on-demand hydraulic-driven, suction-type fan with remote-mounted drive		
Powertrain	2-speed propel with AutoShift		
Maximum Travel Speed			
Low	3.2 km/h (2.0 mph)		
High	4.7 km/h (2.9 mph)		
Drawbar Pull	57 085 kg (125,850 lb.)		
Hydraulics	Open center, load sensing; in-cab mode selectors, illuminated: power modes (3), travel modes (2), and work modes (2)		
Main Pumps	2 variable-displacement pumps		
Maximum Rated Flow	566 L/m (150 gpm) x 2		
Pilot Pump	1 gear		
Maximum Rated Flow	30 L/m (7.9 gpm)		
Pressure Setting	3900 kPa (566 psi)		
System Operating Pressure			
Circuits			
Implement	31 900 kPa (4,627 psi)		
Travel	34 300 kPa (4,975 psi)		
Swing	29 400 kPa (4,264 psi)		
Power Boost	34 300 kPa (4,975 psi)		
Controls	Pilot levers, short stroke, low-effort hydraulic pilot controls with shutoff lever		
Cylinders	Heat-treated, chrome-plated, polished cylinder rods; hardened steel (replaceable bushings) pivot pins		
	<i>Bore</i>	<i>Rod Diameter</i>	<i>Stroke</i>
Boom (2)	215 mm (8.5 in.)	150 mm (5.9 in.)	1835 mm (72.2 in.)
Arm (1)	225 mm (8.9 in.)	160 mm (6.3 in.)	2225 mm (87.6 in.)
Bucket (1)	200 mm (7.9 in.)	140 mm (5.5 in.)	1555 mm (61.2 in.)
Electrical			
Number of Batteries (12 volt)	2		
Battery Capacity	500 CCA		
Alternator Rating	50 amp		
Work Lights	5 halogen (1 mounted on frame, 2 mounted on boom, and 2 mounted on top of cab)		
Undercarriage	Planetary final drives with axial-piston motors		
Rollers (each side)			
Carrier	3		
Track	9		
Shoes, Double-Bar Grousers (each side)	51		
Track			
Adjustment	Hydraulic		
Guides	Front and center		
Chain	Sealed and lubricated		
Ground Pressure			
Double-Bar Grouser Shoes			
650 mm (26 in.)	106.9 kPa (15.4 psi)		
750 mm (30 in.)	94.5 kPa (13.5 psi)		
900 mm (36 in.)	84.8 kPa (12.0 psi)		
1020 mm (40 in.)	94.5 kPa (10.6 psi)		

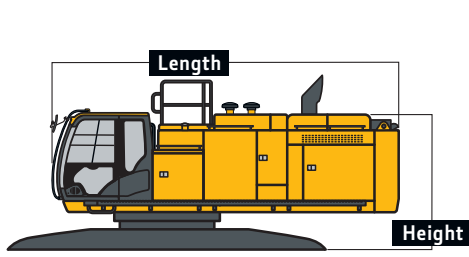
Machine Dimensions		870G LC			
Arm Length		3.7 m (12 ft. 2 in.)	4.4 m (14 ft. 5 in.)	5.4 m (17 ft. 9 in.)	2.95 m (9 ft. 8 in.) ME with 7.1-m (23 ft. 4 in.) ME Boom
A Overall Height with Arm		4.77 m (15 ft. 8 in.)	5.13 m (16 ft. 10 in.)	5.76 m (18 ft. 11 in.)	5.20 m (17 ft. 1 in.)
B Overall Length with Arm		14.80 m (48 ft. 7 in.)	14.80 m (48 ft. 7 in.)	14.65 m (48 ft. 1 in.)	13.55 m (44 ft. 5 in.)
C Rear-End Length/Swing Radius		4.54 m (14 ft. 11 in.)			
D Distance Between Idler/Sprocket Centerline		5.11 m (16 ft. 9 in.)			
E Undercarriage Length		6.36 m (20 ft. 10 in.)			
F Counterweight Clearance		1.68 m (5 ft. 6 in.)			
G Upperstructure Width		4.12 m (13 ft. 6 in.)			
H Cab Height		3.69 m (12 ft. 1 in.)			
I Track Width with Double-Bar Grouser Shoes		650 mm (26 in.) / 750 mm (30 in.) / 900 mm (36 in.) / 1020 mm (40 in.)			
J Track Gauge with 900-mm (36 in.) Double-Bar Grouser Shoes		Operating Position 3.45 m (11 ft. 4 in.) Transport Position 2.83 m (9 ft. 3 in.)			
K Ground Clearance		0.89 m (35 in.)			
L Width over Track with 900-mm (36 in.) Double-Bar Grouser Shoes		Operating Position 4.35 m (14 ft. 3 in.) Transport Position 3.73 m (12 ft. 3 in.)			



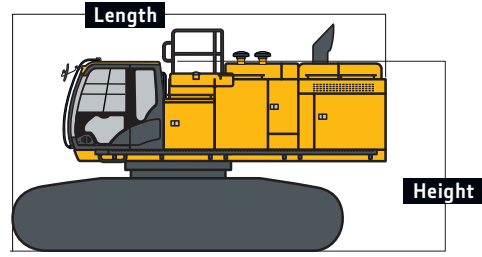
Packing Dimensions and Weights for Transportation

	Length	Height	Overall Width	Weight
Base Machine (without front attachment and side frame)*	6.50 m (21 ft. 4 in.)	2.96 m (9 ft. 9 in.)	3.42 m (11 ft. 3 in.)	29 000 kg (63,934 lb.)
Side Frame (each)				
With 650-mm (26 in.) Shoes	6.36 m (20 ft. 10 in.)	1.50 m (4 ft. 11 in.)	1.33 m (4 ft. 4 in.)	12 300 kg (27,117 lb.)
With 750-mm (30 in.) Shoes	6.36 m (20 ft. 10 in.)	1.50 m (4 ft. 11 in.)	1.33 m (4 ft. 4 in.)	12 600 kg (27,778 lb.)
With 900-mm (36 in.) Shoes	6.36 m (20 ft. 10 in.)	1.50 m (4 ft. 11 in.)	1.42 m (4 ft. 8 in.)	13 100 kg (28,881 lb.)
With 1020-mm (40 in.) Shoes	6.36 m (20 ft. 10 in.)	1.50 m (4 ft. 11 in.)	1.46 m (4 ft. 9 in.)	13 500 kg (29,762 lb.)
Counterweight, Standard	3.36 m (11 ft. 0 in.)	1.62 m (5 ft. 4 in.)	0.72 m (28 in.)	13 333 kg (29,394 lb.)
Boom				
7.1 m (23 ft. 4 in.)	7.49 m (24 ft. 7 in.)	2.70 m (8 ft. 10 in.)	1.45 m (4 ft. 9 in.)	7670 kg (16,909 lb.)
8.4 m (27 ft. 7 in.)	8.78 m (28 ft. 10 in.)	2.50 m (8 ft. 2 in.)	1.45 m (4 ft. 9 in.)	8190 kg (18,056 lb.)
10.0 m (32 ft. 10 in.)	10.37 m (34 ft. 0 in.)	2.70 m (8 ft. 10 in.)	1.45 m (4 ft. 9 in.)	9390 kg (20,701 lb.)
Arm				
2.95 m (9 ft. 8 in.)	4.46 m (14 ft. 8 in.)	1.66 m (5 ft. 5 in.)	0.85 m (33 in.)	4620 kg (10,185 lb.)
3.7 m (12 ft. 2 in.)	5.29 m (17 ft. 4 in.)	1.42 m (4 ft. 8 in.)	0.82 m (32 in.)	4290 kg (9,458 lb.)
4.4 m (14 ft. 5 in.)	5.88 m (19 ft. 3 in.)	1.42 m (4 ft. 8 in.)	0.82 m (32 in.)	4630 kg (10,207 lb.)
5.4 m (17 ft. 9 in.)	6.83 m (22 ft. 5 in.)	1.48 m (4 ft. 10 in.)	0.80 m (31 in.)	4940 kg (10,891 lb.)
Base Machine (without front attachment)*				
With 650-mm (26 in.) Shoes	7.53 m (24 ft. 8 in.)	3.89 m (12 ft. 9 in.) / 3.86 m (12 ft. 8 in.) w/o exhaust stack	3.48 m (11 ft. 5 in.)	53 400 kg (117,727 lb.)
With 750-mm (30 in.) Shoes	7.53 m (24 ft. 8 in.)	3.89 m (12 ft. 9 in.) / 3.86 m (12 ft. 8 in.) w/o exhaust stack	3.58 m (11 ft. 9 in.)	54 000 kg (119,050 lb.)
With 900-mm (36 in.) Shoes	7.53 m (24 ft. 8 in.)	3.89 m (12 ft. 9 in.) / 3.86 m (12 ft. 8 in.) w/o exhaust stack	3.73 m (12 ft. 3 in.)	55 000 kg (121,254 lb.)
With 1020-mm (40 in.) Shoes	7.53 m (24 ft. 8 in.)	3.89 m (12 ft. 9 in.) / 3.86 m (12 ft. 8 in.) w/o exhaust stack	3.85 m (12 ft. 8 in.)	55 800 kg (123,018 lb.)

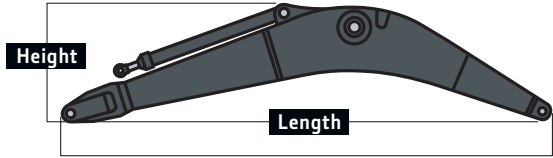
*Steps on the track frame, exhaust stack, and side hydraulic oil tank; handrails on the upper battery box; upper fuel tank; and side hydraulic oil tank must be removed.



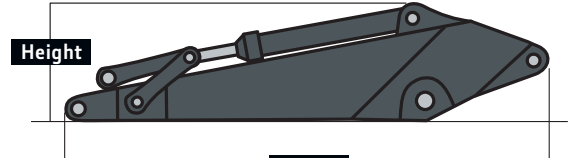
Base Machine



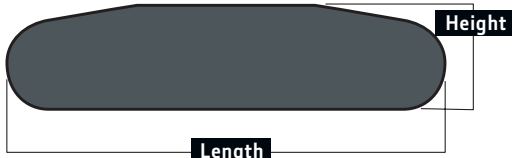
Less Boom, Arm, and Counterweight



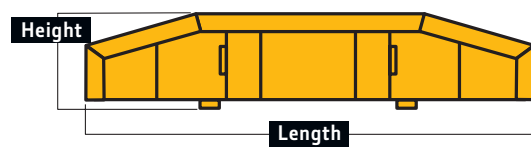
Boom



Arm



Side Frame



Counterweight

Lift Capacities

Boldface type indicates hydraulically limited capacity; lightface type indicates stability-limited capacities, in kg (lb.). Ratings at bucket lift hook; machine equipped with standard gauge and situated on firm, uniform supporting surface. Total load includes weight of cables, hook, etc. Figures do not exceed 87 percent of hydraulic capacities or 75 percent of weight needed to tip machine. All lift capacities are based on ISO 10567 (with power boost).

HORIZONTAL DISTANCE FROM CENTERLINE OF ROTATION

LOAD POINT HEIGHT	3.0 m (10 ft.)		4.5 m (15 ft.)		6.0 m (20 ft.)		7.5 m (25 ft.)		9.0 m (30 ft.)		10.5 m (35 ft.)		12.0 m (40 ft.)	
	Over Front	Over Side	Over Front	Over Side	Over Front	Over Side	Over Front	Over Side	Over Front	Over Side	Over Front	Over Side	Over Front	Over Side
9.0 m (30 ft.)									(27,690)	(27,690)	(19,450)	(19,450)		
7.5 m (25 ft.)									13 530	13 530	12 670	12 670		
									(29,450)	(29,450)	(26,640)	(26,640)		
6.0 m (20 ft.)							16 970	16 970	14 840	14 840	13 490	12 540	9300	9300
							(36,620)	(36,620)	(32,180)	(32,180)	(29,370)	(26,860)	(16,450)	(16,450)
4.5 m (15 ft.)					25 250	25 250	19 610	19 610	16 420	15 860	14 420	12 110	12 000	9350
					(54,120)	(54,120)	(42,250)	(42,250)	(35,520)	(34,120)	(31,320)	(25,980)	(23,410)	(19,960)
3.0 m (10 ft.)					29 590	28 620	22 180	20 250	18 010	15 130	15 400	11 650	13 670	9120
					(63,590)	(61,710)	(47,810)	(43,630)	(38,940)	(32,540)	(33,400)	(25,010)	(27,730)	(19,490)
1.5 m (5 ft.)					28 890	27 170	24 200	19 280	19 360	14 490	16 260	11 240	14 110	8870
					(69,870)	(58,490)	(52,240)	(41,520)	(41,870)	(31,160)	(35,220)	(24,120)	(29,650)	(19,010)
Ground Line					28 790	26 420	25 380	18 640	20 260	14 020	16 820	10 920	13 980	8700
					(68,030)	(56,810)	(54,870)	(40,100)	(43,820)	(30,140)	(36,390)	(23,450)	(26,770)	(18,650)
-1.5 m (-5 ft.)			16 350	16 350	33 260	26 150	25 660	18 300	20 540	13 740	16 910	10 730		
			(37,550)	(37,550)	(72,030)	(56,180)	(55,510)	(39,350)	(44,410)	(29,540)	(36,500)	(23,060)		
-3.0 m (-10 ft.)	16 530	16 530	24 950	24 950	31 890	26 190	24 980	18 220	20 050	13 660	16 230	10 720		
	(37,410)	(37,410)	(57,060)	(57,060)	(69,030)	(56,250)	(54,000)	(39,180)	(43,250)	(29,380)	(34,820)	(23,060)		
-4.5 m (-15 ft.)	25 420	25 420	36 210	36 210	29 280	26 490	23 170	18 390	18 450	13 800				
	(57,580)	(57,580)	(81,680)	(81,680)	(63,220)	(56,920)	(49,890)	(39,570)	(39,500)	(29,730)				
-6.0 m (-20 ft.)			31 730	31 730	24 960	24 960	19 640	18 850	14 570	14 310				
			(68,100)	(68,100)	(53,450)	(53,450)	(41,730)	(40,640)						

With 8.4-m (27 ft. 7 in.) boom, 4.4-m (14 ft. 5 in.) arm, 2.9-m³ (3.79 cu. yd.) bucket, and 650-mm (26 in.) double-bar grouser shoes

Lift Capacities (continued) 870G LC

Boldface type indicates hydraulically limited capacity; lightface type indicates stability-limited capacities, in kg (lb.). Ratings at bucket lift hook; machine equipped with standard gauge and situated on firm, uniform supporting surface. Total load includes weight of cables, hook, etc. Figures do not exceed 87 percent of hydraulic capacities or 75 percent of weight needed to tip machine. All lift capacities are based on ISO 10567 (with power boost).

LOAD POINT HEIGHT	HORIZONTAL DISTANCE FROM CENTERLINE OF ROTATION													
	3.0 m (10 ft.)		4.5 m (15 ft.)		6.0 m (20 ft.)		7.5 m (25 ft.)		9.0 m (30 ft.)		10.5 m (35 ft.)		12.0 m (40 ft.)	
	Over Front	Over Side	Over Front	Over Side	Over Front	Over Side	Over Front	Over Side	Over Front	Over Side	Over Front	Over Side	Over Front	Over Side
<i>With 7.1-m (23 ft. 4 in.) ME boom, 2.95-m (9 ft. 8 in.) ME arm, 4.5-m³ (5.89 cu. yd.) bucket, and 650-mm (26 in.) double-bar grouser shoes</i>														
7.5 m (25 ft.)							18 590 (40,540)	18 590 (40,540)						
6.0 m (20 ft.)					24 030 (51,760)	24 030 (51,760)	20 180 (43,740)	20 180 (43,740)	17 960 (39,200)	15 640 (33,380)				
4.5 m (15 ft.)					28 170 (60,570)	28 170 (60,570)	22 240 (48,080)	21 160 (45,510)	18 940 (41,120)	15 290 (32,740)				
3.0 m (10 ft.)					31 890 (68,680)	29 020 (62,470)	24 270 (52,450)	20 180 (43,400)	19 970 (43,290)	14 780 (31,720)				
1.5 m (5 ft.)					33 940 (73,300)	27 780 (59,730)	25 680 (55,500)	19 380 (41,660)	20 660 (44,710)	14 310 (30,710)				
Ground Line					34 060 (73,720)	27 140 (58,300)	26,030 (56,270)	18 870 (40,540)	20 610 (44,450)	13 990 (30,040)				
-1.5 m (-5 ft.)			37 400 (86,600)	37 400 (86,600)	32 420 (70,180)	26 950 (57,870)	24 990 (53,930)	18 660 (40,100)	19 060 (40,100)	13 920 (30,040)				
-3.0 m (-10 ft.)	37 120 (84,430)	37 120 (84,430)	37 090 (80,340)	37 090 (80,340)	28 750 (61,990)	27 130 (58,270)	21 820 (46,550)	18 800 (40,460)						
-4.5 m (-15 ft.)			28 290 (60,460)	28 290 (60,460)	21 550 (45,370)	21 550 (45,370)								
<i>With 8.4-m (27 ft. 7 in.) boom, 4.4-m (14 ft. 5 in.) arm, 2.9-m³ (3.79 cu. yd.) bucket, and 750-mm (30 in.) double-bar grouser shoes</i>														
9.0 m (30 ft.)										10 020 (27,690)	10 020 (27,690)			
7.5 m (25 ft.)									13 530 (29,450)	12 670 (29,450)	12 670 (26,640)	12 670 (26,640)		
6.0 m (20 ft.)							16 970 (36,620)	16 970 (36,620)	14 840 (32,180)	14 840 (32,180)	13 490 (29,370)	12 650 (27,100)	9300 (16,450)	9300 (16,450)
4.5 m (15 ft.)					25 250 (54,120)	25 250 (54,120)	19 610 (42,250)	16 420 (35,520)	16 420 (34,410)	14 420 (31,320)	12 220 (26,220)	12 000 (23,410)	9450 (20,160)	
3.0 m (10 ft.)					29 590 (63,590)	28 850 (62,210)	22 180 (47,810)	20 420 (44,000)	18 010 (38,940)	15 260 (32,830)	15 400 (33,400)	11 760 (25,250)	13 670 (27,730)	9210 (19,700)
1.5 m (5 ft.)					28 890 (69,870)	27 400 (58,990)	24 200 (52,240)	19 450 (41,880)	19 360 (41,870)	14 620 (31,450)	16 260 (35,220)	11 350 (24,360)	14 110 (29,650)	8970 (19,210)
Ground Line					28 790 (68,030)	26 660 (57,310)	25 380 (54,870)	18 810 (40,460)	20 260 (43,820)	14 150 (30,430)	16 820 (36,390)	11 030 (23,690)	14 120 (26,770)	8790 (18,860)
-1.5 m (-5 ft.)			16 350 (37,550)	16 350 (37,550)	33 260 (72,030)	26 380 (56,680)	25 660 (55,510)	18 470 (39,720)	20 540 (44,410)	13 870 (29,830)	16 910 (36,500)	10 850 (23,300)		
-3.0 m (-10 ft.)	16 530 (37,410)	16 530 (37,410)	24 950 (57,060)	24 950 (57,060)	31 890 (69,030)	26 420 (56,750)	24 980 (54,000)	18 390 (39,550)	20 050 (43,250)	13 790 (29,670)	16 230 (34,820)	10 830 (23,300)		
-4.5 m (-15 ft.)	25 420 (57,580)	25 420 (57,580)	36 210 (81,680)	36 210 (81,680)	29 280 (63,220)	26 720 (57,420)	23 170 (49,890)	18 560 (39,940)	18 450 (39,500)	13 940 (30,020)				
-6.0 m (-20 ft.)			31 730 (68,100)	31 730 (68,100)	24 960 (53,450)	24 960 (53,450)	19 640 (41,730)	19 020 (41,000)	14 570 (41,000)	14 440 (41,000)				
<i>With 8.4-m (27 ft. 7 in.) boom, 3.7-m (12 ft. 2 in.) arm, 3.5-m³ (4.58 cu. yd.) bucket, and 900-mm (36 in.) double-bar grouser shoes</i>														
9.0 m (30 ft.)										13 880 (30,450)	13 880 (30,450)			
7.5 m (25 ft.)									14 650 (31,870)	14 650 (31,870)	13 100 (25,050)	12 690 (25,050)		
6.0 m (20 ft.)					22 870 (48,970)	22 870 (48,970)	18 430 (39,740)	18 430 (39,740)	15 890 (34,440)	15 890 (34,440)	14 330 (31,210)	12 490 (26,730)		
4.5 m (15 ft.)					27 610 (59,130)	27 610 (59,130)	20 980 (45,190)	20 980 (45,190)	17 360 (37,560)	15 870 (34,130)	15 160 (32,930)	12 130 (26,030)		
3.0 m (10 ft.)					31 520 (67,720)	28 480 (61,420)	23 340 (50,310)	20 280 (43,710)	18 810 (40,670)	15 200 (32,710)	16 010 (34,700)	11 740 (25,190)		
1.5 m (5 ft.)					25 410 (61,700)	25 410 (59,000)	25 010 (54,000)	19 470 (41,920)	19 950 (43,140)	14 660 (31,520)	16 690 (36,140)	11 390 (24,460)		
Ground Line					29 580 (69,890)	26 980 (57,990)	25 770 (55,720)	18 980 (40,830)	20 580 (44,500)	14 280 (30,710)	17 020 (36,790)	11 140 (23,940)		
-1.5 m (-5 ft.)			18 560 (42,710)	18 560 (42,710)	32 750 (70,990)	26 910 (57,790)	25 590 (55,360)	18 780 (40,370)	20 520 (44,340)	14 090 (30,310)	16 750 (36,070)	11 040 (23,740)		
-3.0 m (-10 ft.)	20 700 (46,800)	20 700 (46,800)	30 190 (69,030)	30 190 (69,030)	30 770 (66,640)	27 080 (58,170)	24 400 (52,720)	18 810 (40,460)	19 560 (42,110)	14 110 (30,370)				
-4.5 m (-15 ft.)			34 430 (74,510)	34 430 (74,510)	27 470 (59,280)	27 470 (59,100)	21 900 (47,040)	19 090 (41,100)	17 090 (36,210)	14 390 (31,050)				
-6.0 m (-20 ft.)			27 450 (58,690)	27 450 (58,690)	22 090 (46,990)	22 090 (46,990)	17 000 (35,450)	17 000 (35,450)						

Lift Capacities (continued) 870G LC

Boldface type indicates hydraulically limited capacity; lightface type indicates stability-limited capacities, in kg (lb.). Ratings at bucket lift hook; machine equipped with standard gauge and situated on firm, uniform supporting surface. Total load includes weight of cables, hook, etc. Figures do not exceed 87 percent of hydraulic capacities or 75 percent of weight needed to tip machine. All lift capacities are based on ISO 10567 (with power boost).

LOAD POINT HEIGHT	HORIZONTAL DISTANCE FROM CENTERLINE OF ROTATION																	
	3.0 m (10 ft.)		4.5 m (15 ft.)		6.0 m (20 ft.)		7.5 m (25 ft.)		9.0 m (30 ft.)		10.5 m (35 ft.)		12.0 m (40 ft.)					
	Over Front	Over Side	Over Front	Over Side	Over Front	Over Side	Over Front	Over Side	Over Front	Over Side	Over Front	Over Side	Over Front	Over Side				
<i>With 10.0-m (32 ft. 10 in.) boom, 4.4-m (14 ft. 5 in.) arm, 2.0-m³ (2.63 cu. yd.) bucket, 900-mm (36 in.) double-bar grouser shoes, and 12 400-kg (27,337 lb.) standard counterweight</i>																		
9.0 m (30 ft.)															10 150 (22,130)	10 150 (22,130)	9760 (21,450)	9760 (21,450)
7.5 m (25 ft.)															10 900 (23,660)	10 900 (23,660)	10 130 (22,110)	10 050 (21,480)
6.0 m (20 ft.)							16 520 (35,420)	16 520 (35,420)	13 630 (29,380)	13 630 (29,380)	11 860 (25,670)	11 860 (25,670)	10 720 (23,320)	9730 (20,840)				
4.5 m (15 ft.)							19 240 (41,260)	19 240 (41,260)	15 300 (32,950)	15 230 (32,850)	12 930 (27,960)	11 830 (25,450)	11 410 (24,750)	9330 (20,000)				
3.0 m (10 ft.)							21 600 (46,410)	18 730 (40,460)	16 860 (36,330)	14 330 (30,900)	13 990 (30,220)	11 230 (24,160)	12 110 (26,240)	8930 (19,160)				
1.5 m (5 ft.)							23 190 (49,970)	17 810 (38,410)	18 100 (39,060)	13 630 (29,360)	14 890 (32,180)	10 730 (23,070)	12 730 (27,570)	8580 (14,800)				
Ground Line							23 960 (51,760)	17 320 (37,280)	18 920 (40,870)	13 150 (28,310)	15 550 (33,600)	10 350 (22,260)	13 190 (28,550)	8310 (17,840)				
-1.5 m (-5 ft.)					13 350 (31,420)	13 350 (31,420)	24 070 (52,080)	17 110 (36,810)	19 270 (41,660)	12 890 (27,730)	15 880 (34,320)	10 120 (21,760)	13 400 (28,960)	8150 (17,500)				
-3.0 m (-10 ft.)			11 970 (27,640)	11 970 (27,640)	20 970 (48,640)	20 970 (48,640)	23 610 (51,100)	17 120 (36,800)	19 130 (41,350)	12 810 (27,550)	15 810 (34,130)	10 040 (21,590)	13 240 (28,510)	8110 (17,430)				
-4.5 m (-15 ft.)	15 260 (34,670)	15 260 (34,670)	20 150 (46,110)	20 150 (46,110)	27 960 (60,590)	25 110 (53,910)	22 560 (48,790)	17 290 (37,180)	18 430 (39,780)	12 900 (27,760)	15 210 (32,730)	10 120 (21,780)	12 440 (26,420)	8240 (17,800)				
-6.0 m (-20 ft.)	23 300 (52,950)	23 300 (52,950)	29 880 (68,530)	29 880 (68,530)	25 530 (55,120)	25 530 (55,060)	20 770 (44,760)	17 650 (37,990)	16 990 (36,480)	13 180 (28,400)	13 760 (29,210)	10 400 (22,460)						
-7.5 m (-25 ft.)			26 930 (57,740)	26 930 (57,740)	21 900 (46,870)	21 900 (46,870)	17 840 (38,010)	17 840 (38,010)	14 240 (29,900)	13 730 (29,720)								

<i>With 10.0-m (32 ft. 10 in.) boom, 5.4-m (17 ft. 9 in.) arm, 1.9-m³ (2.48 cu. yd.) bucket, 900-mm (36 in.) double-bar grouser shoes, and 12 400-kg (27,337 lb.) standard counterweight</i>																		
9.0 m (30 ft.)																	8720 (19,090)	8720 (19,090)
7.5 m (25 ft.)															9860 (21,400)	9860 (21,400)	9220 (20,090)	9220 (20,090)
6.0 m (20 ft.)										12 360 (26,650)	12 360 (26,650)	10 880 (23,560)	10 880 (23,560)	9890 (21,490)	9890 (21,490)			
4.5 m (15 ft.)								17 400 (37,340)	17 400 (37,340)	14 090 (30,370)	14 090 (30,370)	12 030 (26,020)	12 030 (26,020)	10 670 (23,130)	9680 (20,760)			
3.0 m (10 ft.)								19 980 (42,950)	19 980 (42,950)	15 790 (34,040)	14 910 (32,150)	13 190 (28,510)	11 640 (25,040)	11 470 (24,840)	9230 (19,790)			
1.5 m (5 ft.)								21 990 (47,390)	18 390 (39,660)	17 250 (37,220)	14 050 (30,280)	14 240 (30,780)	11 040 (23,740)	12 210 (26,440)	8810 (18,900)			
Ground Line								23 290 (50,280)	17 590 (37,890)	18 340 (39,620)	13 410 (28,880)	15 080 (32,610)	10 560 (22,710)	12 820 (27,750)	8470 (18,170)			
-1.5 m (-5 ft.)					13 380 (31,210)	13 380 (31,210)	23 890 (51,670)	17 160 (36,920)	19 000 (41,080)	13 000 (27,970)	15 640 (33,810)	10 230 (21,990)	13 230 (28,610)	8220 (17,640)				
-3.0 m (-10 ft.)			10 770 (24,720)	10 770 (24,720)	18 570 (42,930)	18 570 (42,930)	23 900 (51,710)	17 000 (36,560)	19 200 (41,520)	12 800 (27,520)	15 850 (34,250)	10 050 (21,590)	13 350 (28,820)	8090 (17,370)				
-4.5 m (-15 ft.)	12 310 (27,930)	12 310 (27,930)	16 580 (37,880)	16 580 (37,880)	25 350 (58,530)	24 580 (52,790)	23 330 (50,440)	17 050 (36,670)	18 910 (40,850)	12 780 (27,480)	15 630 (33,710)	10 020 (21,540)	13 060 (28,070)	8090 (17,400)				
-6.0 m (-20 ft.)	18 200 (41,300)	18 200 (41,300)	23 580 (53,950)	23 580 (53,950)	27 630 (59,690)	25 000 (53,740)	22 100 (47,680)	17 300 (37,230)	18 010 (38,790)	12 940 (27,850)	14 820 (31,810)	10 150 (21,870)	12 050 (25,490)	8280 (17,890)				
-7.5 m (-25 ft.)	25 380 (57,800)	25 380 (57,800)	31 580 (67,920)	31 580 (67,920)	24 810 (53,320)	24 810 (53,320)	19 990 (42,880)	17 760 (38,270)	16 250 (34,680)	13 300 (28,710)	13 000 (27,340)	10 520 (22,780)						
-9.0 m (-30 ft.)			25 770 (54,680)	25 770 (54,680)	20 520 (43,480)	20 520 (43,480)	16 470 (34,640)	16 470 (34,640)	12 800 (26,220)	12 800 (26,220)								

Buckets

A full line of buckets is offered to meet a wide variety of applications. Digging forces are with power boost. Tooth selection includes the John Deere Fanggs™ or ESCO teeth standard. Replaceable cutting edges and a variety of teeth are available through John Deere Parts. Optional side cutters add 150 mm (6 in.) to bucket widths. Capacities are SAE heaped ratings.

Bucket Type	Bucket Width		Bucket Capacity		Bucket Weight		Bucket Dig Force (SAE)				Arm Dig Force 4.4 m (14 ft. 5 in.) (ISO)				Arm Dig Force 5.4 m (17 ft. 9 in.) (ISO)				ME Arm Dig Force (SAE)	
	mm	in.	m ³	cu. yd.	kg	lb.	kN	lb.	kN	lb.	kN	lb.	kN	lb.	kN	lb.	kN	lb.	kN	lb.
Heavy Duty High Capacity	914	36	2.09	2.7	2767	6,100	360	80,973	369	82,855	264	59,251	270	60,770	230	51,673	236	52,981	361	81,247
	1067	42	2.55	3.3	2972	6,552	360	80,973	369	82,855	264	59,251	270	60,770	230	51,673	236	52,981	361	81,247
	1219	48	3.02	3.9	3177	7,004	360	80,973	369	82,855	264	59,251	270	60,770	230	51,673	236	52,981	361	81,247
	1372	54	3.49	4.6	3558	7,844	360	80,973	369	82,855	264	59,251	270	60,770	230	51,673	236	52,981	361	81,247
	1524	60	3.98	5.2	3572	7,875	360	80,973	369	82,855	264	59,251	270	60,770	230	51,673	236	52,981	361	81,247
	1829	72	4.96	6.5	3786	8,346	360	80,973	369	82,855	264	59,251	270	60,770	230	51,673	236	52,981	361	81,247
	2032	80	5.63	7.4	4519	9,963	360	80,973	369	82,855	264	59,251	270	60,770	230	51,673	236	52,981	361	81,247
Heavy Capacity Dirt	2286	90	5.81	7.6	4296	9,471	341	76,746	379	85,298	268	60,338	275	61,885	275	61,782	307	69,050	370	83,150
Heavy Duty	914	36	1.51	2.0	2510	5,534	372	83,647	414	92,967	276	62,098	283	63,691	300	67,336	335	75,259	384	86,270
	1067	42	1.86	2.4	2761	6,087	372	83,647	414	92,967	276	62,098	283	63,691	300	67,336	335	75,259	384	86,270
	1219	48	2.22	2.9	2935	6,471	372	83,647	414	92,967	276	62,098	283	63,691	300	67,336	335	75,259	384	86,270
	1372	54	2.58	3.4	3091	6,814	372	83,647	414	92,967	276	62,098	283	63,691	300	67,336	335	75,259	384	86,270
	1524	60	2.95	3.9	3232	7,125	372	83,647	414	92,967	276	62,098	283	63,691	300	67,336	335	75,259	384	86,270
Truck Loading	2134	84	4.21	5.5	3285	7,242	363	81,638	404	90,735	274	61,607	281	63,186	238	53,456	244	54,809	380	85,393
	2337	92	4.63	6.0	3598	7,932	363	81,638	404	90,735	274	61,607	281	63,186	238	53,456	244	54,809	380	85,393

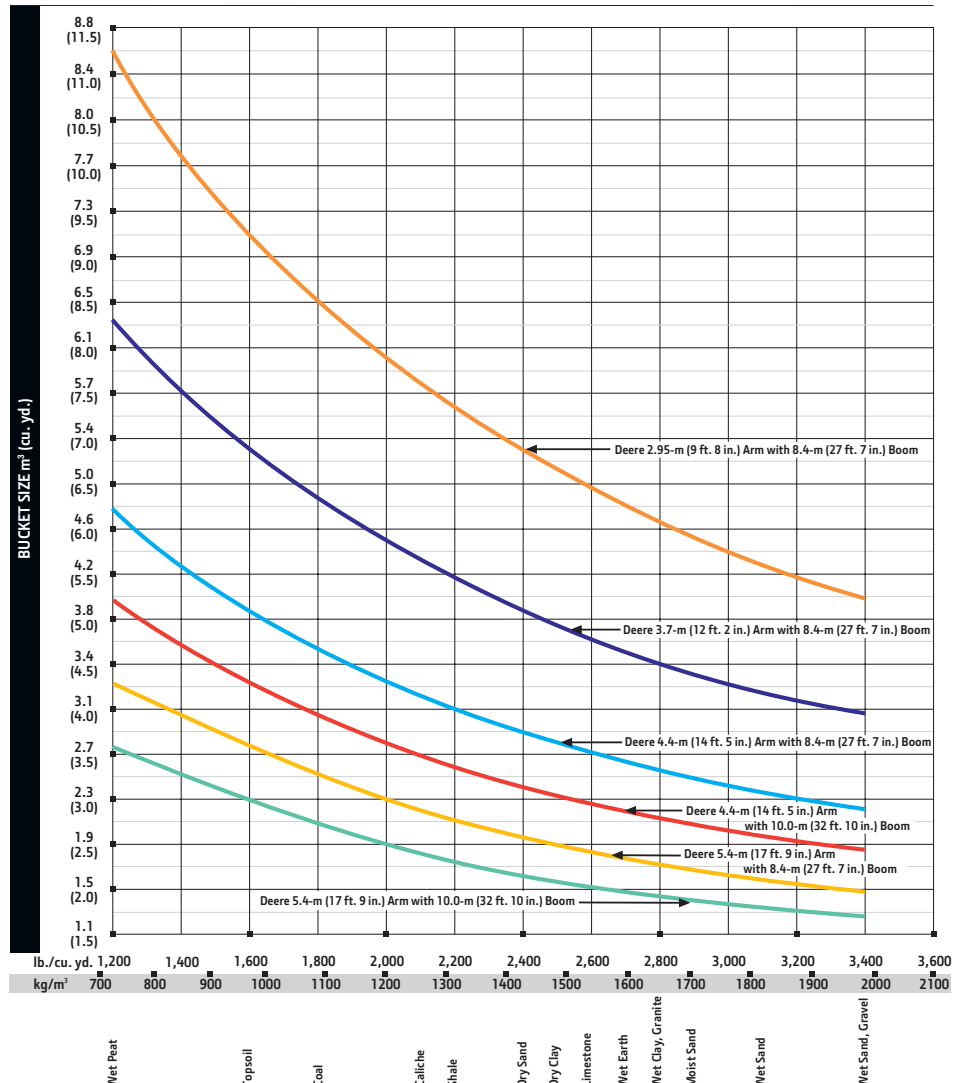
Lift Capacities (continued) 870G LC

Boldface type indicates hydraulically limited capacity; lightface type indicates stability-limited capacities, in kg (lb.). Ratings at bucket lift hook; machine equipped with standard gauge and situated on firm, uniform supporting surface. Total load includes weight of cables, hook, etc. Figures do not exceed 87 percent of hydraulic capacities or 75 percent of weight needed to tip machine. All lift capacities are based on ISO 10567 (with power boost).

Load Point Height	HORIZONTAL DISTANCE FROM CENTERLINE OF ROTATION														
	3.0 m (10 ft.)		4.5 m (15 ft.)		6.0 m (20 ft.)		7.5 m (25 ft.)		9.0 m (30 ft.)		10.5 m (35 ft.)		12.0 m (40 ft.)		
	Over Front	Over Side	Over Front	Over Side	Over Front	Over Side	Over Front	Over Side	Over Front	Over Side	Over Front	Over Side	Over Front	Over Side	
<i>With 10.0-m (32 ft. 10 in.) boom, 4-4-m (14 ft. 5 in.) arm, 2.0-m³ (2.63 cu. yd.) bucket, 1020-mm (40 in.) double-bar grouser shoes, and 12 400-kg (27,337 lb.) standard counterweight</i>															
9.0 m (30 ft.)												10 150 (22,130)	10 150 (22,130)	9760 (21,450)	9760 (21,450)
7.5 m (25 ft.)												10 900 (23,660)	10 900 (23,660)	10 130 (22,110)	10 130 (21,730)
6.0 m (20 ft.)							16 520 (35,420)	16 520 (35,420)	13 630 (29,380)	13 630 (29,380)	11 860 (25,670)	11 860 (25,670)	10 720 (23,320)	9840 (21,080)	
4.5 m (15 ft.)							19 240 (41,260)	19 240 (41,260)	15 300 (32,950)	15 300 (32,950)	12 930 (27,960)	11 960 (25,730)	11 410 (24,750)	9440 (20,240)	
3.0 m (10 ft.)							21 600 (46,410)	18 930 (40,900)	16 860 (36,330)	14 490 (31,250)	13 990 (30,220)	11 360 (24,450)	12 110 (26,240)	9040 (19,400)	
1.5 m (5 ft.)							23 190 (49,970)	18 020 (38,850)	18 100 (39,060)	13 790 (29,710)	14 890 (32,180)	10 860 (23,360)	12 730 (27,570)	8690 (18,660)	
Ground Line							23 960 (51,760)	17 520 (37,720)	18 920 (40,870)	13 310 (28,660)	15 550 (33,600)	10 490 (22,540)	13 190 (28,550)	8480 (18,080)	
-1.5 m (-5 ft.)					13 350 (31,420)	13 350 (31,420)	24 070 (52,080)	17 320 (37,240)	19 270 (41,660)	13 050 (28,070)	15 880 (34,320)	10 260 (22,050)	13 400 (28,960)	8260 (17,740)	
-3.0 m (-10 ft.)			11 970 (27,640)	11 970 (27,640)	20 970 (48,640)	20 970 (48,640)	23 610 (51,100)	17 320 (37,230)	19 130 (41,350)	12 970 (27,900)	15 810 (34,130)	10 170 (21,870)	13 240 (28,510)	8220 (17,680)	
-4.5 m (-15 ft.)	15 260 (34,670)	15 260 (34,670)	20 150 (46,110)	20 150 (46,110)	27 960 (60,590)	25 380 (54,510)	22 560 (48,790)	17 490 (37,620)	18 430 (39,780)	13 060 (28,110)	15 210 (32,730)	10 250 (22,060)	12 440 (26,420)	8350 (18,050)	
-6.0 m (-20 ft.)	23 300 (52,950)	23 300 (52,950)	29 880 (68,530)	29 880 (68,530)	25 530 (55,120)	25 530 (55,120)	20 770 (44,760)	17 850 (38,420)	16 990 (36,480)	13 340 (28,750)	13 760 (29,210)	10 530 (22,750)			
-7.5 m (-25 ft.)	26 930 (57,740)	26 930 (57,740)	21 900 (46,870)	21 900 (46,870)	21 900 (46,870)	21 900 (46,870)	17 840 (38,010)	17 840 (38,010)	14 240 (29,900)	13 890 (29,900)					

Bucket Selection Guide*

2.95-m (9 ft. 8 in.) (ISO)		Bucket Tip Radius		Number of Teeth
kN	lb.	mm	in.	
377	84,686	2426	95.53	3
377	84,686	2426	95.53	4
377	84,686	2426	95.53	4
377	84,686	2426	95.53	5
377	84,686	2426	95.53	5
377	84,686	2426	95.53	6
377	84,686	2426	95.53	6
386	86,669	2303	90.66	7
400	89,922	2113	83.19	3
400	89,922	2113	83.19	4
400	89,922	2113	83.19	4
400	89,922	2113	83.19	5
400	89,922	2113	83.19	5
396	89,008	2165	85.22	6
396	89,008	2165	85.22	8



* Contact your John Deere dealer for optimum bucket and attachment selections. These recommendations are for general conditions and average use. Does not include optional equipment such as thumbs or couplers. Larger buckets may be possible when using light materials, for flat and level operations, less compacted materials, and volume loading applications such as mass excavation applications in ideal conditions. Smaller buckets are recommended for adverse conditions such as off-level applications, rocks, and uneven surfaces. Bucket capacity indicated is SAE heaped.

Additional equipment

Key: ● Standard ▲ Optional or special

See your John Deere dealer for further information.

670G	870G	Engine
●	●	Auto-idle system
●	●	Automatic belt-tension device
●	●	Batteries (2 – 12 volt)
●	●	Coolant recovery tank
●	●	Dual-element dry-type air filter
●	●	Electronic engine control
●	●	Enclosed fan guard (conforms to SAE J1308)
●	●	Engine coolant to –37 deg. C (–34 deg. F)
●	●	Engine oil-sampling valve
●	●	Fuel filter with water separator
●	●	Full-flow oil filter
●	●	Turbocharger with charge air cooler
●	●	Underhood selective catalytic reduction (SCR) after-treatment device less diesel particulate filter (DPF)
●	●	Cool-on-demand hydraulic-driven fan
●	●	Glow-plug start aid
●	●	500-hour engine-oil-change interval
●	●	70% (35 deg.) off-level capability
●	●	Hydraulic fan reverser
		Hydraulic System
●	●	Reduced-drift valve for boom down, arm in
●	●	Auxiliary hydraulic valve section
●	●	Spring-applied, hydraulically released automatic swing brake
●	●	Auxiliary hydraulic-flow adjustments through monitor
●	●	Auto power lift
●	●	4,000-hour hydraulic-oil-change interval
●	●	Hydraulic oil-sampling valve
▲	▲	Auxiliary pilot and electric controls
▲	▲	Load-lowering control device
▲	▲	Single-pedal propel control
▲	▲	Pattern changer
		Undercarriage
●	●	Planetary drive with axial piston motors
●	●	Propel motor shields
●	●	Spring-applied, hydraulically released automatic propel brake
●	●	Track guides, front idler and center
●	●	2-speed propel with AutoShift
●	●	Upper carrier rollers (3)
●	●	Sealed and lubricated track chain
▲	▲	Double-bar grouser shoes, 650 mm (26 in.)
▲	▲	Double-bar grouser shoes, 750 mm (30 in.)
▲	▲	Double-bar grouser shoes, 900 mm (36 in.)
▲	▲	Double-bar grouser shoes, 1020 mm (40 in.)

670G	870G	Upperstructure
●	●	Right- and left-hand mirrors
●	●	Vandal locks with ignition key: Cab door / Fuel cap / Service doors / Toolbox
●	●	Debris screen in side panel
●	●	Service platform, left side
●	●	Remote-mounted engine oil and fuel filters
▲	▲	Counterweight-removal system
		Front Attachments
●	●	Centralized lubrication system
●	●	Dirt seals on all bucket pins
●	●	Lubricator with hose reel and grease gun
●	●	No-boom-arm option
▲	▲	Boom, 7.8 m (25 ft. 7 in.)
▲	▲	Boom, 8.4 m (27 ft. 7 in.)
▲	▲	Boom, mass excavating (ME), 6.8 m (22 ft. 4 in.)
▲	▲	Boom, ME, 7.1 m (23 ft. 4 in.)
▲	▲	Boom, reach, 10.0 m (32 ft. 10 in.)
▲	▲	Arm, 3.6 m (11 ft. 10 in.)
▲	▲	Arm, 3.7 m (12 ft. 2 in.)
▲	▲	Arm, 4.2 m (13 ft. 9 in.)
▲	▲	Arm, 4.4 m (14 ft. 5 in.)
▲	▲	Arm, 5.3 m (17 ft. 5 in.)
▲	▲	Arm, 5.4 m (17 ft. 9 in.)
▲	▲	Arm, ME, 2.9 m (9 ft. 6 in.)
▲	▲	Arm, ME, 2.95 m (9 ft. 8 in.)
▲	▲	Boom cylinder with plumbing to main-frame for no-boom-arm option
▲	▲	Buckets: Heavy duty / Heavy-duty high capacity / Side cutters and teeth
		Operator's Station
●	●	Adjustable independent-control positions (levers-to-seat, seat-to-pedals)
●	●	AM/FM radio
●	●	Auto climate control/air conditioner/heater/pressurizer
●	●	Built-in Operator's Manual storage compartment and manual
●	●	Cell-phone power outlet, 12 volt, 60 watt, 5 amp
●	●	Coat hook
●	●	Deluxe air-suspension heated cloth seat with 100-mm (4 in.) adjustable armrests
●	●	Floor mat
●	●	Front windshield wiper with intermittent speeds
●	●	Gauges (illuminated): Diesel Exhaust Fluid (DEF) / Engine coolant / Fuel
●	●	Horn, electric
●	●	Hourmeter, electric

670G	870G	Operator's Station (continued)
●	●	Hydraulic shutoff lever, all controls
●	●	Hydraulic warm-up control
●	●	Interior light
●	●	Large cup holder
●	●	Machine Information Center (MIC)
●	●	Mode selectors (illuminated): Power modes – 3 / Travel modes – 2 / Work modes – 2 / Boom mode
●	●	Multifunction, color LCD monitor with: Diagnostic capability / Multiple-language capabilities / Maintenance tracking / Clock / System monitoring with alarm features: Auto-idle indicator, engine-air-cleaner-restriction indicator light, engine check, engine-coolant-temperature indicator light with audible alarm, engine-oil-pressure indicator light with audible alarm, low-alternator-charge indicator light, low-fuel indicator light, low DEF indication with audible alarm, fault-code-alert indicator, fuel-rate display, wiper-mode indicator, work-lights-on indicator and work-mode indicator
●	●	Fluid-level switch and indicator light for engine coolant and engine oil
●	●	Motion alarm with cancel switch (conforms to SAE J994)
●	●	Power-boost switch on right console lever
●	●	Propel pedals and levers
●	●	SAE 2-lever control pattern
●	●	Seat belt, 51 mm (2 in.), retractable
●	●	Tinted glass
●	●	Transparent tinted overhead hatch
●	●	Hot/cold beverage compartment
▲	▲	Monitor system with alarm features: Hydraulic oil filter restriction indicator light
▲	▲	Protection screens for cab front, rear, and side
▲	▲	Seat belt, 76 mm (3 in.), non-retractable
▲	▲	Window vandal-protection covers
		Electrical
●	●	50-amp alternator
●	●	Blade-type multi-fused circuits
●	●	Positive-terminal battery covers
●	●	JDLink™ wireless communication system
●	●	Rearview camera
▲	▲	Cab extension wiring harness
		Lights
●	●	Work lights: Halogen / 2 mounted on boom / 1 mounted on frame / 2 mounted on top of cab

Net engine power is with standard equipment including air cleaner, exhaust system, alternator, and cooling fan, at test conditions specified per ISO 9249. No derating is required up to 2000-m (6,560 ft.) altitude. Specifications and design subject to change without notice. Wherever applicable, specifications are in accordance with SAE standards. Except where otherwise noted, these specifications are based on units with 1370-mm (54 in.) buckets, 900-mm (36 in.) double-bar grouser shoes, full fuel tanks, and 79-kg (175 lb.) operators; a 670G LC unit with 9800-kg (21,605 lb.) counterweight; and a 870G LC unit with 12 400-kg (27,337 lb.) counterweight.



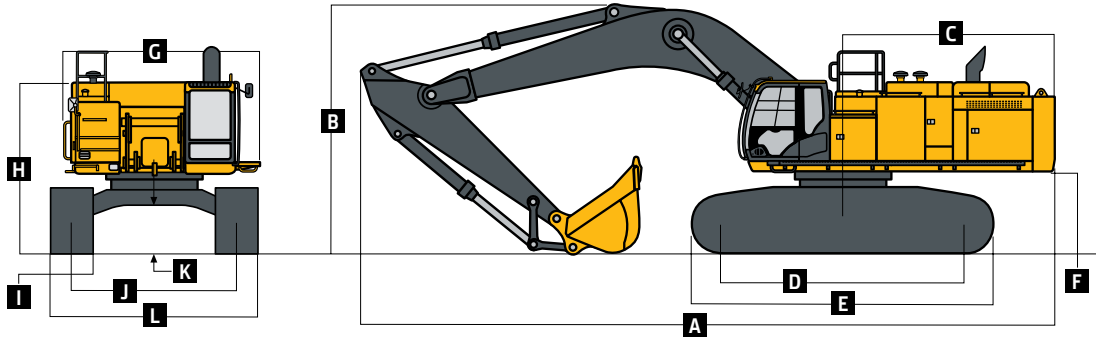
870G LC



Engine	870G LC		
Manufacturer and Model	Isuzu 6WG1-iT4		
Non-Road Emissions Standard	EPA Interim Tier 4/EU Stage IIIB		
Net Rated Power (ISO 9249)	397 kW (532 hp) at 1,800 rpm		
Cylinders	6		
Displacement	15.7 L (957 cu. in.)		
Off-Level Capacity	70% (35 deg.)		
Aspiration	Turbocharged, air-to-air charge-air cooler		
Cooling	Cool-on-demand hydraulic-driven, suction-type fan with remote-mounted drive		
Powertrain	2-speed propel with AutoShift		
Maximum Travel Speed			
Low	3.2 km/h (2.0 mph)		
High	4.7 km/h (2.9 mph)		
Drawbar Pull	57 240 kg (126,193 lb.)		
Hydraulics	Open center, load sensing		
Main Pumps	2 variable-displacement pumps		
Maximum Rated Flow	566 L/m (150 gpm) x 2		
Pilot Pump	1 gear		
Maximum Rated Flow	30 L/m (7.9 gpm)		
Pressure Setting	3900 kPa (566 psi)		
System Operating Pressure			
Circuits			
Implement	31 900 kPa (4,627 psi)		
Travel	34 300 kPa (4,975 psi)		
Swing	29 400 kPa (4,264 psi)		
Power Boost	34 300 kPa (4,975 psi)		
Controls	Pilot levers, short stroke, low-effort hydraulic pilot controls with shutoff lever		
Cylinders	Heat-treated, chrome-plated, polished cylinder rods; hardened steel (replaceable bushings) pivot pins		
	<i>Bore</i>	<i>Rod Diameter</i>	<i>Stroke</i>
Boom (2)	215 mm (8.5 in.)	150 mm (5.9 in.)	1835 mm (72.2 in.)
Arm (1)	225 mm (8.9 in.)	160 mm (6.3 in.)	2225 mm (87.6 in.)
Bucket (1)	200 mm (7.9 in.)	140 mm (5.5 in.)	1555 mm (61.2 in.)
Electrical	Number of Batteries (12 volt) 2		
Battery Capacity	500 CCA		
Alternator Rating	50 amp		
Work Lights	5 halogen (1 mounted on frame, 2 mounted on boom, and 2 mounted on top of cab)		
Undercarriage	Rollers (each side)		
Carrier	3		
Track	9		
Shoes, Double-Bar Grousers (each side)	51		
Track	Adjustment Hydraulic		
Guides	Front and center		
Chain	Sealed and lubricated		
Ground Pressure	Double-Bar Grouser Shoes		
650 mm (26 in.)	115.3 kPa (16.7 psi)		
750 mm (30 in.)	100.7 kPa (14.6 psi)		
900 mm (36 in.)	84.8 kPa (12.3 psi)		
1020 mm (40 in.)	77.2 kPa (11.2 psi)		
Swing Mechanism	Speed 7.8 rpm		
Torque	267 000 Nm (196,929 lb.-ft.)		

Machine Dimensions 870G LC

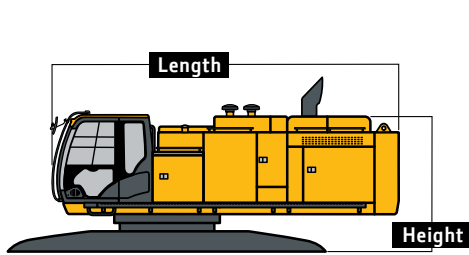
A Overall Length with Arm	
3.7 m (12 ft. 2 in.)	14.88 m (48 ft. 10 in.)
4.4 m (14 ft. 5 in.)	14.80 m (48 ft. 7 in.)
5.4 m (17 ft. 9 in.)	14.65 m (48 ft. 1 in.)
2.95-m (9 ft. 8 in.) Mass Excavating with Mass-Excavating Boom	13.55 m (44 ft. 5 in.)
B Overall Height with Arm	
3.7 m (12 ft. 2 in.)	4.77 m (15 ft. 8 in.)
4.4 m (14 ft. 5 in.)	5.13 m (16 ft. 10 in.)
5.4 m (17 ft. 9 in.)	5.76 m (18 ft. 11 in.)
2.95-m (9 ft. 8 in.) Mass Excavating with Mass-Excavating Boom	5.20 m (17 ft. 1 in.)
C Rear-End Length/Swing Radius	4.54 m (14 ft. 11 in.)
D Distance Between Idler/Sprocket Centerline	5.11 m (16 ft. 9 in.)
E Undercarriage Length	6.36 m (20 ft. 10 in.)
F Counterweight Clearance	1.68 m (5 ft. 6 in.)
G Upperstructure Width	4.12 m (13 ft. 6 in.)
H Cab Height	3.69 m (12 ft. 1 in.)
I Track Width with Double-Bar Grouser Shoes	650 mm (26 in.) / 750 mm (30 in.) / 900 mm (36 in.) / 1020 mm (40 in.)
J Gauge Width	
Operating Position	3.45 m (11 ft. 4 in.)
Transport Position	2.83 m (9 ft. 3 in.)
K Ground Clearance	0.89 m (35 in.)
L Overall Width with 900-mm (36 in.) Double-Bar Grouser Shoes	
Operating Position	4.35 m (14 ft. 3 in.)
Transport Position	3.73 m (12 ft. 3 in.)


Packing Dimensions and Weights for Transportation

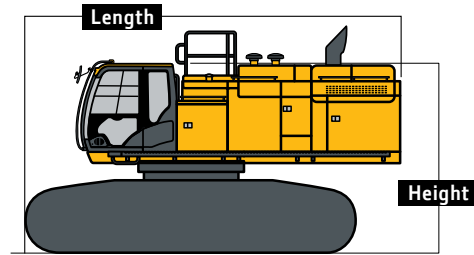
	Length	Height	Overall Width	Weight
Base Machine (without front attachment and side frame)*	6.04 m (19 ft. 10 in.)	3.49 m (11 ft. 5 in.)	3.39 m (11 ft. 1 in.)	27 400 kg (60,407 lb.)
Side Frame**				
650-mm (26 in.) Shoe Width	6.36 m (20 ft. 10 in.)	1.50 m (4 ft. 11 in.)	1.30 m (4 ft. 3 in.)	12 100 kg (26,676 lb.)
750-mm (30 in.) Shoe Width	6.36 m (20 ft. 10 in.)	1.50 m (4 ft. 11 in.)	1.33 m (4 ft. 4 in.)	12 500 kg (27,558 lb.)
900-mm (36 in.) Shoe Width	6.36 m (20 ft. 10 in.)	1.50 m (4 ft. 11 in.)	1.43 m (4 ft. 8 in.)	12 890 kg (28,418 lb.)
1020-mm (40 in.) Shoe Width	6.36 m (20 ft. 10 in.)	1.50 m (4 ft. 11 in.)	1.45 m (4 ft. 9 in.)	13 320 kg (29,366 lb.)
Counterweight, Standard	3.36 m (11 ft. 0 in.)	1.62 m (5 ft. 4 in.)	0.72 m (28 in.)	13 300 kg (29,321 lb.)
Boom				
7.1 m (23 ft. 4 in.)	7.49 m (24 ft. 7 in.)	2.70 m (8 ft. 10 in.)	1.45 m (4 ft. 9 in.)	7670 kg (16,909 lb.)
8.4 m (27 ft. 7 in.)	8.78 m (28 ft. 10 in.)	2.50 m (8 ft. 2 in.)	1.45 m (4 ft. 9 in.)	8200 kg (18,078 lb.)
10.0 m (32 ft. 10 in.)	10.37 m (34 ft. 0 in.)	2.70 m (8 ft. 10 in.)	1.45 m (4 ft. 9 in.)	9390 kg (20,701 lb.)
Arm				
2.95 m (9 ft. 8 in.)	4.46 m (14 ft. 8 in.)	1.66 m (5 ft. 5 in.)	0.85 m (33 in.)	4650 kg (10,251 lb.)
3.7 m (12 ft. 2 in.)	5.29 m (17 ft. 4 in.)	1.42 m (4 ft. 8 in.)	0.82 m (32 in.)	4330 kg (9,546 lb.)
4.4 m (14 ft. 5 in.)	5.88 m (19 ft. 3 in.)	1.42 m (4 ft. 8 in.)	0.82 m (32 in.)	4660 kg (10,274 lb.)
5.4 m (17 ft. 9 in.)	6.83 m (22 ft. 5 in.)	1.48 m (4 ft. 10 in.)	0.80 m (31 in.)	4950 kg (10,913 lb.)
Length Less Boom, Arm, and Counterweight	7.08 m (23 ft. 3 in.)	4.41 m (14 ft. 6 in.) / 3.39 m (11 ft. 1 in.) without exhaust stack	3.60 m (11 ft. 10 in.)	51 800 kg (114,199 lb.) with 650-mm (26 in.) shoes / 52 500 kg (115,743 lb.) with 750-mm (30 in.) shoes

*Steps on the track frame and the side hydraulic oil tank, handrails on the upper battery box, upper fuel tank, and the side hydraulic oil tank must be removed to comply with the overall width dimensions above.

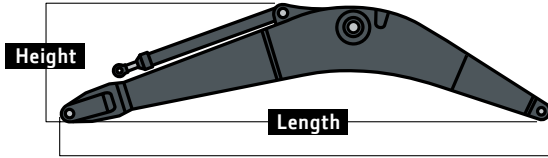
**The dimensions and the weights indicate those of 1 side frame.



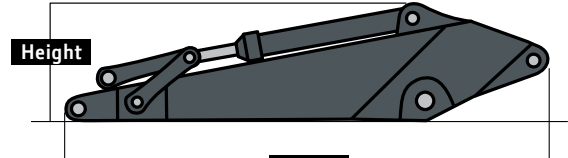
Base Machine



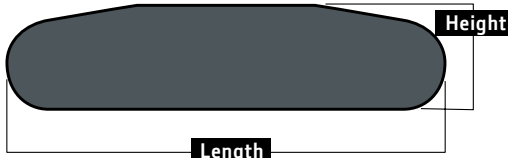
Less Boom, Arm, and Counterweight



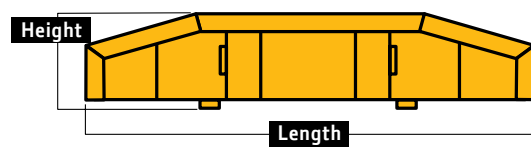
Boom



Arm



Side Frame



Counterweight

Lift Capacities

Boldface type indicates hydraulically limited capacity; lightface type indicates stability-limited capacities, in kg (lb.). Ratings at bucket lift hook; machine equipped with standard gauge and situated on firm, uniform supporting surface. Total load includes weight of cables, hook, etc. Figures do not exceed 87 percent of hydraulic capacities or 75 percent of weight needed to tip machine. All lift capacities are based on ISO 10567 (with power boost).

HORIZONTAL DISTANCE FROM CENTERLINE OF ROTATION

LOAD POINT HEIGHT	3.0 m (10 ft.)		4.5 m (15 ft.)		6.0 m (20 ft.)		7.5 m (25 ft.)		9.0 m (30 ft.)		10.5 m (35 ft.)		12.0 m (40 ft.)	
	Over Front	Over Side	Over Front	Over Side	Over Front	Over Side	Over Front	Over Side	Over Front	Over Side	Over Front	Over Side	Over Front	Over Side
9.0 m (30 ft.)												10 017 (19,446)	10 017 (19,446)	
7.5 m (25 ft.)									13 533 (29,445)	13 533 (29,445)	12 668 (26,635)	12 546 (26,635)		
6.0 m (20 ft.)							16 971 (36,623)	16 971 (36,623)	14 840 (32,179)	14 840 (32,179)	13 489 (29,365)	12 255 (26,246)	9301 (16,454)	9288 (16,454)
4.5 m (15 ft.)					25 251 (54,124)	25 251 (54,124)	19 607 (42,254)	19 607 (42,254)	16 415 (35,518)	15 519 (33,378)	14 422 (31,321)	11 822 (25,362)	11 997 (23,411)	9110 (19,434)
3.0 m (10 ft.)					29 592 (63,589)	28 023 (60,425)	22 176 (47,813)	19 817 (42,693)	18 010 (38,942)	14 781 (31,795)	15 403 (33,396)	11 363 (24,389)	13 674 (27,728)	8875 (18,968)
1.5 m (5 ft.)					28 893 (69,872)	26 575 (57,214)	24 195 (52,236)	18 846 (40,574)	19 362 (41,869)	14 143 (30,416)	16 260 (35,217)	10 951 (23,508)	13 846 (29,651)	8631 (18,483)
Ground Line					28 793 (68,029)	25 831 (55,531)	25 383 (54,873)	18 201 (39,155)	20 259 (43,815)	13 672 (29,394)	16 821 (36,393)	10 634 (22,832)	13 656 (26,766)	8454 (18,128)
-1.5 m (-5 ft.)			16 350 (37,551)	16 350 (37,551)	33 262 (72,025)	25 555 (54,895)	25 660 (55,505)	17 863 (38,407)	20 543 (44,412)	13 394 (28,791)	16 806 (36,123)	10 449 (22,446)		
-3.0 m (-10 ft.)	16 528 (37,406)	16 528 (37,406)	24 952 (57,056)	24 952 (57,056)	31 886 (69,029)	25 594 (54,968)	24 981 (53,997)	17 787 (38,243)	20 048 (43,253)	13 315 (28,633)	16 234 (34,820)	10 432 (22,447)		
-4.5 m (-15 ft.)	25 416 (57,577)	25 416 (57,577)	36 206 (81,680)	36 206 (81,680)	29 279 (63,219)	25 896 (55,642)	23 165 (49,890)	17 955 (38,630)	18 445 (39,501)	13 459 (28,987)				
-6.0 m (-20 ft.)			31 730 (68,104)	31 730 (68,104)	24 964 (53,446)	24 964 (53,446)	19 636 (41,734)	18 414 (39,695)						

Lift Capacities (continued) 870G LC

Boldface type indicates hydraulically limited capacity; **lightface type** indicates stability-limited capacities, in kg (lb.). Ratings at bucket lift hook; machine equipped with standard gauge and situated on firm, uniform supporting surface. Total load includes weight of cables, hook, etc. Figures do not exceed 87 percent of hydraulic capacities or 75 percent of weight needed to tip machine. All lift capacities are based on ISO 10567 (with power boost).

LOAD POINT HEIGHT		HORIZONTAL DISTANCE FROM CENTERLINE OF ROTATION													
		3.0 m (10 ft.)		4.5 m (15 ft.)		6.0 m (20 ft.)		7.5 m (25 ft.)		9.0 m (30 ft.)		10.5 m (35 ft.)		12.0 m (40 ft.)	
		Over Front	Over Side	Over Front	Over Side	Over Front	Over Side	Over Front	Over Side	Over Front	Over Side	Over Front	Over Side	Over Front	Over Side
<i>With 4.5-m³ (5.89 cu. yd.) bucket, 2.95-m (9 ft. 8 in.) BE arm, 7.1-m (23 ft. 4 in.) BE boom, and 650-mm (26 in.) double-bar grouser shoes</i>															
7.5 m (25 ft.)							18 586 (40,535)	18 586 (40,535)							
6.0 m (20 ft.)					24 030 (51,762)	24 030 (51,762)	20 180 (43,741)	20 180 (43,741)	17 955 (39,197)	15 295 (32,640)					
4.5 m (15 ft.)					28 171 (60,565)	28 171 (60,565)	22 238 (48,083)	20 727 (44,569)	18 941 (41,121)	14 949 (32,000)					
3.0 m (10 ft.)					31 893 (68,676)	28 423 (61,194)	24 273 (52,446)	19 742 (42,457)	19 970 (43,285)	14 436 (30,974)					
1.5 m (5 ft.)					33 940 (73,303)	27 185 (58,454)	25 677 (55,503)	18 944 (40,722)	20 662 (44,705)	13 961 (29,963)					
Ground Line					34 060 (73,273)	26 550 (57,025)	26 028 (56,274)	18 430 (39,600)	20 609 (44,450)	13 643 (29,293)					
-1.5 m (-5 ft.)			37 404 (86,602)	37 404 (86,602)	32 417 (70,176)	26 358 (56,585)	24 990 (53,930)	18 223 (39,155)							
-3.0 m (-10 ft.)	37 120 (84,432)	37 120 (84,432)	37 087 (80,338)	37 087 (80,338)	28 747 (61,986)	26 539 (56,992)	21 817 (46,554)	18 368 (39,521)							
<i>With 2.9-m³ (3.79 cu. yd.) bucket, 4.4-m (14 ft. 5 in.) arm, 8.4-m (27 ft. 7 in.) boom, and 750-mm (30 in.) double-bar grouser shoes</i>															
9.0 m (30 ft.)										10 017 (19,446)	10 017 (19,446)				
7.5 m (25 ft.)									13 533 (29,445)	13 533 (29,445)	12 668 (26,635)	12 662 (26,635)			
6.0 m (20 ft.)							16 971 (36,623)	16 971 (36,623)	14 840 (32,179)	14 840 (32,179)	13 489 (29,365)	12 370 (26,496)	9301 (16,454)	9301 (16,454)	
4.5 m (15 ft.)					25 251 (54,124)	25 251 (54,124)	19 607 (42,254)	19 607 (42,254)	16 415 (35,518)	15 659 (33,681)	14 422 (31,321)	11 938 (25,612)	11 997 (23,411)	9209 (19,647)	
3.0 m (10 ft.)					29 592 (63,589)	28 265 (60,945)	22 176 (47,813)	19 994 (43,076)	18 010 (38,942)	14 921 (32,097)	15 403 (33,396)	11 479 (24,639)	13 674 (27,728)	8974 (19,181)	
1.5 m (5 ft.)					28 893 (69,872)	26 816 (57,734)	24 195 (52,236)	19 023 (40,957)	19 362 (41,869)	14 283 (30,718)	16 260 (35,217)	11 066 (23,758)	13 991 (29,651)	8730 (18,697)	
Ground Line					28 793 (68,029)	26 072 (56,051)	25 383 (54,873)	18 378 (39,537)	20 259 (43,815)	13 812 (29,696)	16 821 (36,393)	10 750 (23,082)	13 801 (26,766)	8552 (18,341)	
-1.5 m (-5 ft.)			16 350 (37,551)	16 350 (37,551)	33 262 (72,025)	25 797 (55,415)	25 660 (55,505)	18 040 (38,790)	20 543 (44,412)	13 534 (29,094)	16 905 (36,496)	10 564 (22,696)			
-3.0 m (-10 ft.)	16 528 (37,406)	16 528 (37,406)	24 952 (57,056)	24 952 (57,056)	31 886 (69,029)	25 835 (55,489)	24 981 (53,997)	17 964 (38,625)	20 048 (43,253)	13 455 (28,936)	16 234 (34,820)	10 548 (22,697)			
-4.5 m (-15 ft.)	25 416 (57,577)	25 416 (57,577)	36 206 (81,680)	36 206 (81,680)	29 279 (63,219)	26 138 (56,162)	23 165 (49,890)	18 132 (39,012)	18 445 (39,501)	13 599 (29,289)					
-6.0 m (-20 ft.)			31 730 (68,104)	31 730 (68,104)	24 964 (53,446)	24 964 (53,446)	19 636 (41,734)	18 591 (40,078)							
<i>With 3.5-m³ (4.58 cu. yd.) bucket, 3.7-m (12 ft. 2 in.) arm, 8.4-m (27 ft. 7 in.) boom, and 900-mm (36 in.) double-bar grouser shoes</i>															
9.0 m (30 ft.)										13 883 (30,445)	13 883 (30,445)				
7.5 m (25 ft.)										14 650 (31,872)	14 650 (31,872)	13 097 (25,048)	12 403 (25,048)		
6.0 m (20 ft.)					22 867 (48,972)	22 867 (48,972)	18 428 (39,742)	18 428 (39,742)	15 885 (34,438)	15 885 (34,438)	14 331 (31,213)	12 206 (26,116)			
4.5 m (15 ft.)					27 613 (59,131)	27 613 (59,131)	20 981 (45,194)	20 942 (45,132)	17 362 (37,560)	15 521 (33,384)	15 159 (32,927)	11 849 (25,416)			
3.0 m (10 ft.)					31 519 (67,721)	27 885 (60,141)	23 337 (50,308)	19 847 (42,764)	18 811 (40,667)	14 858 (31,963)	16 005 (34,698)	11 450 (24,576)			
1.5 m (5 ft.)					25 408 (61,704)	25 408 (57,717)	25 009 (53,998)	19 031 (40,974)	19 954 (43,142)	14 310 (30,777)	16 691 (36,137)	11 103 (23,838)			
Ground Line					29 583 (69,892)	26 386 (56,704)	25 770 (55,722)	18 542 (39,887)	20 579 (44,499)	13 934 (29,959)	17 019 (36,789)	10 858 (23,320)			
-1.5 m (-5 ft.)			18 560 (42,711)	18 560 (42,711)	32 751 (70,992)	26 313 (56,510)	25 587 (55,356)	18 338 (39,429)	20 522 (44,342)	13 749 (29,561)	16 753 (36,067)	10 755 (23,121)			
-3.0 m (-10 ft.)	20 695 (46,802)	20 695 (46,802)	30 186 (69,025)	30 186 (69,025)	30 768 (66,644)	26 486 (56,882)	24 398 (52,716)	18 375 (39,513)	19 560 (42,114)	13 767 (29,620)					
-4.5 m (-15 ft.)			34 430 (74,510)	34 430 (74,510)	27 474 (59,278)	26 903 (57,812)	21 900 (47,044)	18 657 (40,158)	17 089 (36,205)	14 047 (30,306)					
-6.0 m (-20 ft.)			27 445 (58,692)	27 445 (58,692)	22 087 (46,986)	22 087 (46,986)	16 999 (35,451)	16 999 (35,451)							

Lift Capacities (continued) 870G LC

Boldface type indicates hydraulically limited capacity; lightface type indicates stability-limited capacities, in kg (lb.). Ratings at bucket lift hook; machine equipped with standard gauge and situated on firm, uniform supporting surface. Total load includes weight of cables, hook, etc. Figures do not exceed 87 percent of hydraulic capacities or 75 percent of weight needed to tip machine. All lift capacities are based on ISO 10567 (with power boost).

LOAD POINT HEIGHT	HORIZONTAL DISTANCE FROM CENTERLINE OF ROTATION													
	3.0 m (10 ft.)		4.5 m (15 ft.)		6.0 m (20 ft.)		7.5 m (25 ft.)		9.0 m (30 ft.)		10.5 m (35 ft.)		12.0 m (40 ft.)	
	Over Front	Over Side	Over Front	Over Side	Over Front	Over Side	Over Front	Over Side	Over Front	Over Side	Over Front	Over Side	Over Front	Over Side
<i>With 2.0-m³ (2.63 cu. yd.) bucket, 4.4-m (14 ft. 5 in.) arm, 10.0-m (32 ft. 10 in.) boom, and 900-mm (36 in.) double-bar grouser shoes</i>														
9.0 m (30 ft.)											10 151	10 151	9756	9756
											(22,132)	(22,132)	(21,446)	(21,283)
7.5 m (25 ft.)											10 899	10 899	10 132	9810
											(23,662)	(23,662)	(22,105)	(20,957)
6.0 m (20 ft.)							16 521	16 521	13 630	13 630	11 858	11 858	10 724	9483
							(35,416)	(35,416)	(29,377)	(29,377)	(25,670)	(25,670)	(23,319)	(20,312)
4.5 m (15 ft.)							19 241	19 241	15 295	14 885	12 932	11 545	11 408	9083
							(41,259)	(41,259)	(32,945)	(32,099)	(27,955)	(24,832)	(24,750)	(19,473)
3.0 m (10 ft.)							21 599	18 293	16 856	13 987	13 985	10 947	12 110	8686
							(46,412)	(39,516)	(36,327)	(30,155)	(30,219)	(23,547)	(26,236)	(18,631)
1.5 m (5 ft.)							23 185	17 376	18 103	13 284	14 889	10 443	12 734	8338
							(49,966)	(37,469)	(39,061)	(28,616)	(32,178)	(22,456)	(27,568)	(17,886)
Ground Line							23 959	16 880	18 919	12 809	15 545	10 069	13 194	8070
							(51,762)	(36,337)	(40,872)	(27,567)	(33,604)	(21,642)	(28,545)	(17,314)
-1.5 m (-5 ft.)					13 348	13 348	24 068	16 677	19 267	12 546	15 876	9839	13 200	7905
					(31,421)	(31,421)	(52,075)	(35,861)	(41,656)	(26,983)	(34,317)	(21,143)	(28,378)	(16,969)
-3.0 m (-10 ft.)			11 968	11 968	20 969	20 969	23 609	16 679	19 127	12 468	15 807	9756	13 157	7865
			(27,635)	(27,635)	(48,643)	(48,643)	(51,101)	(35,853)	(41,349)	(26,809)	(34,134)	(20,971)	(28,313)	(16,908)
-4.5 m (-15 ft.)	15 257	15 257	20 145	20 145	27 964	24 512	22 563	16 854	18 433	12 559	15 212	9830	12 437	7999
	(34,672)	(34,672)	(46,108)	(46,108)	(60,593)	(52,631)	(48,786)	(36,239)	(39,781)	(27,018)	(32,732)	(21,158)	(26,419)	(17,278)
-6.0 m (-20 ft.)	23 304	23 304	29 883	29 883	25 525	25 021	20 774	17 210	16 994	12 835	13 757	10 112		
	(52,949)	(52,949)	(68,530)	(68,530)	(55,119)	(53,772)	(44,755)	(37,042)	(36,475)	(27,657)	(29,212)	(21,846)		
-7.5 m (-25 ft.)			26 926	26 926	21 895	21 895	17 842	17 809	14 240	13 388				
			(57,739)	(57,739)	(46,867)	(46,867)	(38,010)	(38,010)	(29,895)	(28,975)				

<i>With 1.9-m³ (2.48 cu. yd.) bucket, 5.4-m (17 ft. 9 in.) arm, 10.0-m (32 ft. 10 in.) boom, and 900-mm (36 in.) double-bar grouser shoes</i>														
9.0 m (30 ft.)													8717	8717
													(19,090)	(19,090)
7.5 m (25 ft.)											9858	9858	9221	9221
											(21,398)	(21,398)	(20,090)	(20,090)
6.0 m (20 ft.)									12 358	12 358	10 883	10 883	9892	9883
									(26,649)	(26,649)	(23,559)	(23,559)	(21,494)	(21,173)
4.5 m (15 ft.)							17 395	17 395	14 090	14 090	12 034	12 029	10 666	9437
							(37,340)	(37,340)	(30,365)	(30,365)	(26,017)	(25,866)	(23,130)	(20,232)
3.0 m (10 ft.)							19 975	19 183	15 787	14 568	13 193	11 355	11 466	8984
							(42,948)	(41,424)	(34,036)	(31,400)	(28,512)	(24,419)	(24,838)	(19,267)
1.5 m (5 ft.)							21 992	17 948	17 249	13 708	14 242	10 756	12 211	8568
							(47,391)	(38,713)	(37,224)	(29,529)	(30,782)	(23,125)	(26,435)	(18,377)
Ground Line							23 285	17 153	18 341	13 069	15 081	10 278	12 822	8225
							(22,849)	(36,945)	(40,435)	(28,131)	(39,622)	(22,091)	(32,606)	(17,641)
-1.5 m (-5 ft.)					13 383	13 383	23 894	16 721	19 000	12 658	15 636	9945	13 228	7979
					(31,212)	(31,212)	(51,669)	(35,977)	(41,078)	(27,228)	(33,810)	(21,368)	(28,555)	(17,115)
-3.0 m (-10 ft.)			10 774	10 774	18 566	18 566	23 900	16 561	19 202	12 453	15 846	9761	13 146	7846
			(24,721)	(24,721)	(42,934)	(42,934)	(51,712)	(35,613)	(41,521)	(26,778)	(34,245)	(20,975)	(28,263)	(16,843)
-4.5 m (-15 ft.)	12 312	12 312	16 579	16 579	25 346	23 979	23 325	16 614	18 907	12 431	15 628	9730	13 057	7847
	(27,934)	(27,934)	(37,876)	(37,876)	(58,533)	(51,509)	(50,442)	(35,729)	(40,845)	(26,738)	(33,711)	(20,922)	(28,068)	(16,876)
-6.0 m (-20 ft.)	18 197	18 197	23 583	23 583	27 626	24 408	22 096	16 860	18 010	12 589	14 823	9866	12 050	8033
	(41,299)	(41,299)	(53,952)	(53,952)	(59,688)	(52,460)	(47,677)	(36,283)	(38,788)	(27,105)	(31,805)	(21,255)	(25,492)	(17,363)
-7.5 m (-25 ft.)	25 375	25 375	31 576	31 576	24 810	24 810	19 994	17 319	16 247	12 957	13 000	10 237		
	(57,797)	(57,797)	(67,916)	(67,916)	(53,324)	(53,324)	(42,882)	(37,325)	(34,683)	(27,960)	(27,337)	(22,163)		
-9.0 m (-30 ft.)			25 770	25 770	20 524	20 524	16 466	16 466	12 798	12 798				
			(54,676)	(54,676)	(43,483)	(43,483)	(34,644)	(34,644)	(26,223)	(26,223)				

Buckets

A full line of buckets is offered to meet a wide variety of applications. Digging forces are with power boost. Tooth selection includes the John Deere Fanggts™ Standard, Tiger, Twin Tiger, Abrasion panel, or Flare tooth. Replaceable cutting edges and a variety of teeth are available through John Deere Parts. Optional side cutters add 150 mm (6 in.) to bucket widths. Capacities are SAE heaped ratings.

Type Bucket	Bucket Width		Bucket Capacity		Bucket Weight		Bucket Dig Force (SAE)		Bucket Dig Force (ISO)		Arm Dig Force 4.4 m (14 ft. 5 in.) (SAE)		Arm Dig Force 4.4 m (14 ft. 5 in.) (ISO)		Arm Dig Force 5.4 m (17 ft. 9 in.) (SAE)		Arm Dig Force 5.4 m (17 ft. 9 in.) (ISO)		ME Arm Dig Force 2.95 m (9 ft. 8 in.) (SAE)	
	mm	in.	m ³	cu. yd.	kg	lb.	kN	lb.	kN	lb.	kN	lb.	kN	lb.	kN	lb.	kN	lb.	kN	lb.
	Heavy Duty High Capacity	914	36	2.09	2.7	2767	6,100	360	80,973	369	82,855	264	59,251	270	60,770	230	51,673	236	52,981	361
	1067	42	2.55	3.3	2972	6,552	360	80,973	369	82,855	264	59,251	270	60,770	230	51,673	236	52,981	361	81,247
	1219	48	3.02	3.9	3177	7,004	360	80,973	369	82,855	264	59,251	270	60,770	230	51,673	236	52,981	361	81,247
	1370	54	3.49	4.6	3558	7,844	360	80,973	369	82,855	264	59,251	270	60,770	230	51,673	236	52,981	361	81,247
	1524	60	3.98	5.2	3572	7,875	360	80,973	369	82,855	264	59,251	270	60,770	230	51,673	236	52,981	361	81,247
	1829	72	4.96	6.5	3786	8,346	360	80,973	369	82,855	264	59,251	270	60,770	230	51,673	236	52,981	361	81,247
	2032	80	5.63	7.4	4519	9,963	360	80,973	369	82,855	264	59,251	270	60,770	230	51,673	236	52,981	361	81,247
Heavy Capacity Dirt	2286	90	5.81	7.6	4296	9,471	341	76,746	379	85,298	268	60,338	275	61,885	275	61,782	307	69,050	370	83,150
Heavy Duty	914	36	1.51	2.0	2510	5,534	372	83,647	414	92,967	276	62,098	283	63,691	300	67,336	335	75,259	384	86,270
	1067	42	1.86	2.4	2761	6,087	372	83,647	414	92,967	276	62,098	283	63,691	300	67,336	335	75,259	384	86,270
	1219	48	2.22	2.9	2935	6,471	372	83,647	414	92,967	276	62,098	283	63,691	300	67,336	335	75,259	384	86,270
	1370	54	2.58	3.4	3091	6,814	372	83,647	414	92,967	276	62,098	283	63,691	300	67,336	335	75,259	384	86,270
	1524	60	2.95	3.9	3232	7,125	372	83,647	414	92,967	276	62,098	283	63,691	300	67,336	335	75,259	384	86,270
Truck Loading	2134	84	4.21	5.5	3285	7,242	363	81,638	404	90,735	274	61,607	281	63,186	238	53,456	244	54,809	380	85,393
	2337	92	4.63	6.0	3598	7,932	363	81,638	404	90,735	274	61,607	281	63,186	238	53,456	244	54,809	380	85,393

Lift Capacities (continued) 870G LC

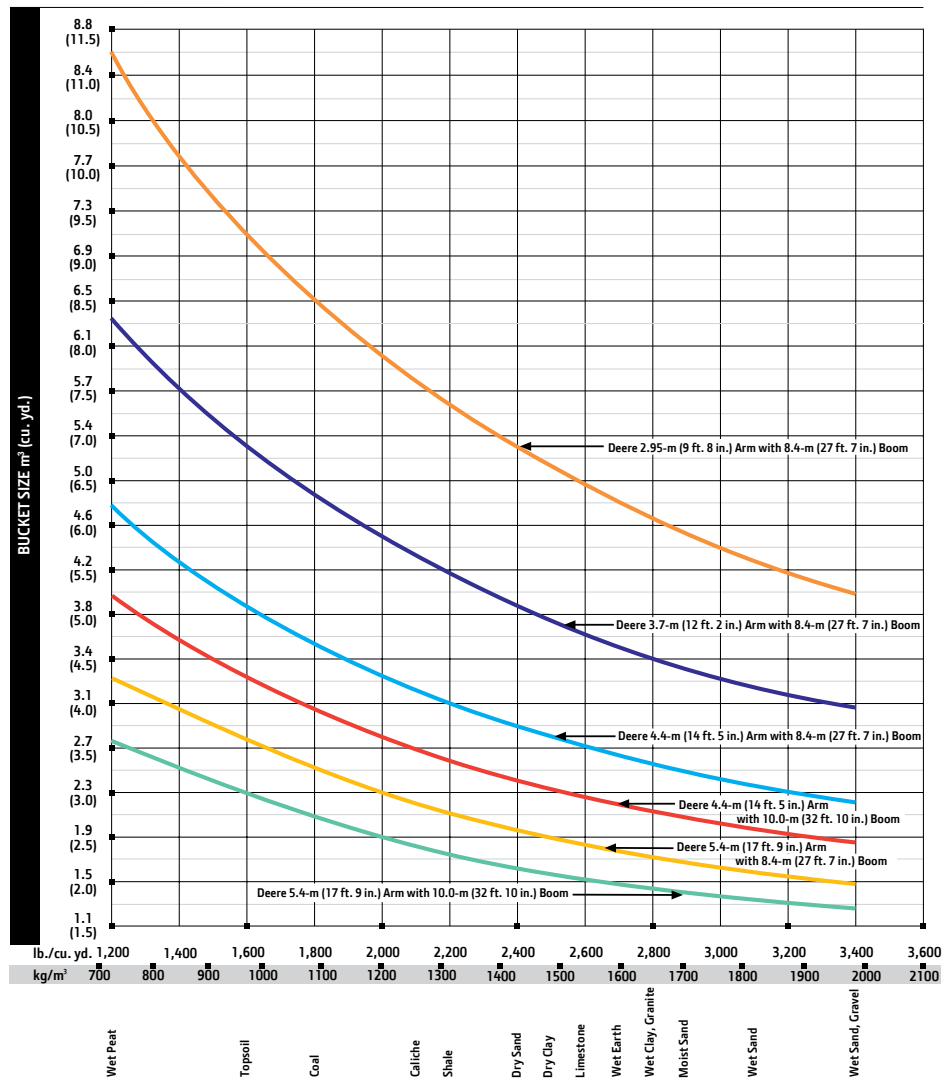
Boldface type indicates hydraulically limited capacity; lightface type indicates stability-limited capacities, in kg (lb.). Ratings at bucket lift hook; machine equipped with standard gauge and situated on firm, uniform supporting surface. Total load includes weight of cables, hook, etc. Figures do not exceed 87 percent of hydraulic capacities or 75 percent of weight needed to tip machine. All lift capacities are based on ISO 10567 (with power boost).

HORIZONTAL DISTANCE FROM CENTERLINE OF ROTATION

Load Point Height	3.0 m (10 ft.)		4.5 m (15 ft.)		6.0 m (20 ft.)		7.5 m (25 ft.)		9.0 m (30 ft.)		10.5 m (35 ft.)		12.0 m (40 ft.)	
	Over Front	Over Side	Over Front	Over Side	Over Front	Over Side	Over Front	Over Side	Over Front	Over Side	Over Front	Over Side	Over Front	Over Side
<i>With 2.0-m³ (2.63 cu. yd.) bucket, 4-4-m (14 ft. 5 in.) arm, 10.0-m (32 ft. 10 in.) boom, and 1020-mm (40 in.) double-bar grouser shoes</i>														
9.0 m (30 ft.)											10 151 (22,131)	10 151 (22,131)	9756 (21,445)	9756 (21,445)
7.5 m (25 ft.)											10 899 (23,662)	10 899 (23,662)	10 132 (22,105)	9922 (21,199)
6.0 m (20 ft.)							16 521 (35,416)	16 521 (35,416)	13 630 (29,377)	13 630 (29,377)	11 858 (25,670)	11 858 (25,670)	10 724 (23,319)	9595 (20,555)
4.5 m (15 ft.)							19 241 (41,259)	19 241 (41,259)	15 295 (32,945)	15 044 (32,443)	12 932 (27,955)	11 676 (25,116)	11 408 (24,750)	9195 (19,715)
3.0 m (10 ft.)							21 599 (46,412)	18 494 (39,951)	16 856 (36,327)	14 146 (30,499)	13 985 (30,219)	11 079 (23,832)	12 110 (26,236)	8798 (18,873)
1.5 m (5 ft.)							23 185 (49,966)	17 577 (37,903)	18 103 (39,061)	13 443 (28,959)	14 889 (32,178)	10 574 (22,740)	12 734 (27,568)	8450 (18,129)
Ground Line							23 959 (51,762)	17 081 (36,772)	18 919 (40,872)	12 968 (27,910)	15 545 (33,604)	10 200 (21,927)	13 194 (28,545)	8182 (17,556)
-1.5 m (-5 ft.)					13 350 (31,425)	13 350 (31,425)	24 068 (52,075)	16 878 (36,296)	19 267 (41,656)	12 705 (27,326)	15 876 (34,317)	9970 (21,427)	13 361 (28,727)	8017 (17,211)
-3.0 m (-10 ft.)			11 969 (27,636)	11 969 (27,636)	20 973 (48,661)	20 973 (48,661)	23 609 (51,101)	16 880 (36,288)	19 127 (41,349)	12 626 (27,152)	15 807 (34,134)	9887 (21,255)	13 242 (28,514)	7977 (17,151)
-4.5 m (-15 ft.)	15 257 (34,673)	15 257 (34,673)	20 145 (46,118)	20 145 (46,118)	27 964 (60,593)	24 787 (53,222)	22 563 (48,786)	17 055 (36,674)	18 433 (39,781)	12 717 (27,362)	15 212 (32,732)	9961 (21,442)	12 437 (26,419)	8111 (17,521)
-6.0 m (-20 ft.)	23 308 (52,949)	23 308 (52,949)	29 885 (68,516)	29 885 (68,516)	25 525 (55,119)	25 296 (54,363)	20 774 (44,755)	17 411 (37,477)	16 994 (36,475)	12 994 (28,000)	13 757 (29,212)	10 243 (22,130)		
-7.5 m (-25 ft.)			26 926 (57,739)	26 926 (57,739)	21 895 (46,867)	21 895 (46,867)	17 842 (38,010)	17 842 (38,010)	14 240 (29,895)	13 547 (29,319)				

Bucket Selection Guide*

	ME Arm Dig Force 2.95 m (9 ft. 8 in.) (ISO)		Bucket Tip Radius		Number of Teeth
	kN	lb.	mm	in.	
	377	84,686	2426	95.53	3
	377	84,686	2426	95.53	4
	377	84,686	2426	95.53	4
	377	84,686	2426	95.53	5
	377	84,686	2426	95.53	5
	377	84,686	2426	95.53	6
	377	84,686	2426	95.53	6
	386	86,669	2303	90.66	7
	400	89,922	2113	83.19	3
	400	89,922	2113	83.19	4
	400	89,922	2113	83.19	4
	400	89,922	2113	83.19	5
	400	89,922	2113	83.19	5
	396	89,008	2165	85.22	6
	396	89,008	2165	85.22	8



* Contact your John Deere dealer for optimum bucket and attachment selections. These recommendations are for general conditions and average use. Does not include optional equipment such as thumbs or couplers. Larger buckets may be possible when using light materials, for flat and level operations, less compacted materials, and volume loading applications such as mass excavation applications in ideal conditions. Smaller buckets are recommended for adverse conditions such as off-level applications, rocks, and uneven surfaces. Bucket capacity indicated is SAE heaped.

Additional equipment

Key: ● Standard ▲ Optional or special

See your John Deere dealer for further information.

670G	870G	Engine
●	●	Auto-idle system
●	●	Automatic belt-tension device
●	●	Batteries (2 – 12 volt)
●	●	Coolant recovery tank
●	●	Dual-element dry-type air filter
●	●	Electronic engine control
●	●	Enclosed fan guard (conforms to SAE J1308)
●	●	Engine coolant to –37 deg. C (–34 deg. F)
●	●	Fuel filter with water separator
●	●	Full-flow oil filter
●	●	Turbocharger with charge air cooler
●	●	Underhood exhaust after-treatment device with curved outlet
●	●	Muffler, under hood, with vertical curved end exhaust stack
●	●	Cool-on-demand hydraulic-driven fan
●	●	Glow-plug start aid
●	●	500-hour engine-oil-change interval
●	●	70% (35 deg.) off-level capability
●	●	Hydraulic fan reverser
		Hydraulic System
●	●	Reduced-drift valve for boom down, arm in
●	●	Auxiliary hydraulic valve section
●	●	Spring-applied, hydraulically released automatic swing brake
●	●	Auxiliary hydraulic-flow adjustments through monitor
●	●	Auto power lift
●	●	4,000-hour hydraulic-oil-change interval
▲	▲	Auxiliary pilot and electric controls
▲	▲	Hydraulic filter restriction indicator kit
▲	▲	Load-lowering control device
▲	▲	Single-pedal propel control
▲	▲	Pattern changer
		Undercarriage
●	●	Planetary drive with axial piston motors
●	●	Propel motor shields
●	●	Spring-applied, hydraulically released automatic propel brake
●	●	Track guides, front idler and center
●	●	2-speed propel with AutoShift
●	●	Upper carrier rollers (3)
●	●	Sealed and lubricated track chain
▲	▲	Double-bar grouser shoes, 650 mm (26 in.)
▲	▲	Double-bar grouser shoes, 750 mm (30 in.)
▲	▲	Double-bar grouser shoes, 900 mm (36 in.)
▲	▲	Double-bar grouser shoes, 1020 mm (40 in.)

670G	870G	Upperstructure
●	●	Right- and left-hand mirrors
●	●	Vandal locks with ignition key: Cab door / Fuel cap / Service doors / Toolbox
●	●	Debris screen in side panel
●	●	Service platform, left side
●	●	Remote-mounted engine oil and fuel filters
▲	▲	Counterweight-removal system
		Front Attachments
●	●	Centralized lubrication system
●	●	Dirt seals on all bucket pins
●	●	Lubricator with hose reel and grease gun
●	●	No-boom-arm option
▲	▲	Boom, 7.8 m (25 ft. 7 in.)
▲	▲	Boom, 8.4 m (27 ft. 7 in.)
▲	▲	Boom, mass excavating, 6.8 m (22 ft. 4 in.)
▲	▲	Boom, mass excavating, 7.1 m (23 ft. 4 in.)
▲	▲	Boom, reach, 10.0 m (32 ft. 10 in.)
▲	▲	Arm, mass excavating, 2.9 m (9 ft. 6 in.)
▲	▲	Arm, mass excavating, 2.95 m (9 ft. 8 in.)
▲	▲	Arm, 3.6 m (11 ft. 10 in.)
▲	▲	Arm, 3.7 m (12 ft. 2 in.)
▲	▲	Arm, 4.2 m (13 ft. 9 in.)
▲	▲	Arm, 4.4 m (14 ft. 5 in.)
▲	▲	Arm, 5.3 m (17 ft. 5 in.)
▲	▲	Arm, 5.4 m (17 ft. 9 in.)
▲	▲	Boom cylinder with plumbing to mainframe for no-boom-arm option
▲	▲	Buckets: Heavy duty / Heavy-duty high capacity / Side cutters and teeth
		Operator's Station
●	●	Adjustable independent-control positions (levers-to-seat, seat-to-pedals)
●	●	AM/FM radio
●	●	Auto climate control/air conditioner/heater/pressurizer, 5.9 kW (20,000 Btu/hr.)
●	●	Built-in Operator's Manual storage compartment and manual
●	●	Cell-phone power outlet, 12 volt, 60 watt, 5 amp
●	●	Coat hook
●	●	Deluxe air-suspension heated cloth seat with 100-mm (4 in.) adjustable armrests
●	●	Floor mat
●	●	Front windshield wiper with intermittent speeds
●	●	Gauges (illuminated): Engine coolant / Fuel
●	●	Horn, electric
●	●	Hourmeter, electric
●	●	Hydraulic shutoff lever, all controls

670G	870G	Operator's Station (continued)
●	●	Hydraulic warm-up control
●	●	Interior light
●	●	Large cup holder
●	●	Machine Information Center (MIC)
●	●	Mode selectors (illuminated): Power modes – 3 / Travel modes – 2 / Work mode – 1 for the 670G LC and 2 for the 870G LC / Boom mode
●	●	Multifunction, color LCD monitor with: Diagnostic capability / Multiple-language capabilities / Maintenance tracking / Clock / System monitoring with alarm features: Auto-idle indicator, engine air cleaner restriction indicator light, engine check, engine coolant temperature indicator light with audible alarm, engine oil pressure indicator light with audible alarm, low-alternator-charge indicator light, low-fuel indicator light, fault code alert indicator, fuel-rate display, wiper-mode indicator, work-lights-on indicator, and work-mode indicator
●	●	Fluid-level switch and indicator light for engine coolant and engine oil
●	●	Motion alarm with cancel switch (conforms to SAE J994)
●	●	Power-boost switch on right console lever
●	●	Propel pedals and levers
●	●	SAE 2-lever control pattern
●	●	Seat belt, 51 mm (2 in.), retractable
●	●	Tinted glass
●	●	Transparent tinted overhead hatch
●	●	Hot/cold beverage compartment
▲	▲	24- to 12-volt D.C. radio converters, 10 amp
▲	▲	Monitor system with alarm features: Hydraulic oil filter restriction indicator light
▲	▲	Protection screens for cab front, rear, and side
▲	▲	Seat belt, 76 mm (3 in.), non-retractable
▲	▲	Window vandal-protection covers
		Electrical
●	●	50-amp alternator
●	●	Blade-type multi-fused circuits
●	●	Positive-terminal battery covers
●	●	JDLINK™ wireless communication system
●	●	Rearview camera
▲	▲	Cab extension wiring harness
		Lights
●	●	Work lights: Halogen / 2 mounted on boom / 1 mounted on frame / 2 mounted on top of cab

Net engine power is with standard equipment including air cleaner, exhaust system, alternator, and cooling fan, at test conditions specified per ISO 9249. No derating is required up to 2000-m (6,560 ft.) altitude. Specifications and design subject to change without notice. Wherever applicable, specifications are in accordance with SAE standards. Except where otherwise noted, these specifications are based on units with 1370-mm (54 in.) buckets, 900-mm (36 in.) double-bar grouser shoes, full fuel tanks, and 79-kg (175 lb.) operators; a 670G LC unit with 10 400-kg (22,928 lb.) counterweight; and a 870G LC unit with 13 300-kg (29,321 lb.) counterweight.

